

KCTD8 Antibody (C-term)
Affinity Purified Rabbit Polyclonal Antibody (Pab)
Catalog # AP11599b**Specification**

KCTD8 Antibody (C-term) - Product Information

Application	WB, IHC-P,E
Primary Accession	O6ZWB6
Other Accession	NP_938167.1
Reactivity	Human, Mouse
Host	Rabbit
Clonality	Polyclonal
Isotype	Rabbit IgG
Calculated MW	52440
Antigen Region	434-462

KCTD8 Antibody (C-term) - Additional Information**Gene ID** 386617**Other Names**

BTB/POZ domain-containing protein KCTD8, KCTD8

Target/Specificity

This KCTD8 antibody is generated from rabbits immunized with a KLH conjugated synthetic peptide between 434-462 amino acids from the C-terminal region of human KCTD8.

Dilution

WB~~1:1000

IHC-P~~1:50~100

Format

Purified polyclonal antibody supplied in PBS with 0.09% (W/V) sodium azide. This antibody is purified through a protein A column, followed by peptide affinity purification.

Storage

Maintain refrigerated at 2-8°C for up to 2 weeks. For long term storage store at -20°C in small aliquots to prevent freeze-thaw cycles.

Precautions

KCTD8 Antibody (C-term) is for research use only and not for use in diagnostic or therapeutic procedures.

KCTD8 Antibody (C-term) - Protein Information**Name** KCTD8**Function** Auxiliary subunit of GABA-B receptors that determine the pharmacology and kinetics of

the receptor response. Increases agonist potency and markedly alter the G-protein signaling of the receptors by accelerating onset and promoting desensitization (By similarity).

Cellular Location

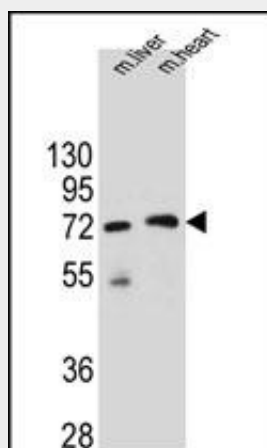
Presynaptic cell membrane. Postsynaptic cell membrane

KCTD8 Antibody (C-term) - Protocols

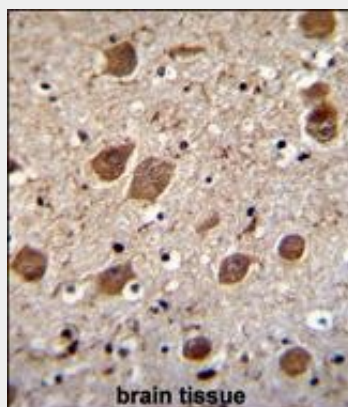
Provided below are standard protocols that you may find useful for product applications.

- [Western Blot](#)
- [Blocking Peptides](#)
- [Dot Blot](#)
- [Immunohistochemistry](#)
- [Immunofluorescence](#)
- [Immunoprecipitation](#)
- [Flow Cytometry](#)
- [Cell Culture](#)

KCTD8 Antibody (C-term) - Images



KCTD8 Antibody (C-term) (Cat. #AP11599b) western blot analysis in mouse liver and heart tissue lysates (35ug/lane). This demonstrates the KCTD8 antibody detected the KCTD8 protein (arrow).



KCTD8 Antibody (C-term) (Cat. #AP11599b) immunohistochemistry analysis in formalin fixed and paraffin embedded human brain tissue followed by peroxidase conjugation of the secondary

antibody and DAB staining. This data demonstrates the use of KCTD8 Antibody (C-term) for immunohistochemistry. Clinical relevance has not been evaluated.

KCTD8 Antibody (C-term) - Background

Auxiliary subunit of GABA-B receptors that determine the pharmacology and kinetics of the receptor response. Increases agonist potency and markedly alter the G-protein signaling of the receptors by accelerating onset and promoting desensitization (By similarity).

KCTD8 Antibody (C-term) - References

Strausberg, R.L., et al. Proc. Natl. Acad. Sci. U.S.A. 99(26):16899-16903(2002)