

**HCFC1R1 Antibody (N-term)**  
**Affinity Purified Rabbit Polyclonal Antibody (Pab)**  
**Catalog # AP11644A****Specification**

---

**HCFC1R1 Antibody (N-term) - Product Information**

Application	WB, IHC-P,E
Primary Accession	<a href="#">O9NWW0</a>
Other Accession	<a href="#">NP_001002018.1</a> , <a href="#">NP_001002017.1</a>
Reactivity	Human
Host	Rabbit
Clonality	Polyclonal
Isotype	Rabbit IgG
Calculated MW	15291
Antigen Region	1-30

**HCFC1R1 Antibody (N-term) - Additional Information****Gene ID** 54985**Other Names**

Host cell factor C1 regulator 1, HCF-1 beta-propeller-interacting protein, HCFC1R1, HPIP

**Target/Specificity**

This HCFC1R1 antibody is generated from rabbits immunized with a KLH conjugated synthetic peptide between 1-30 amino acids from the N-terminal region of human HCFC1R1.

**Dilution**

WB~~1:1000

IHC-P~~1:10~50

**Format**

Purified polyclonal antibody supplied in PBS with 0.09% (W/V) sodium azide. This antibody is purified through a protein A column, followed by peptide affinity purification.

**Storage**

Maintain refrigerated at 2-8°C for up to 2 weeks. For long term storage store at -20°C in small aliquots to prevent freeze-thaw cycles.

**Precautions**

HCFC1R1 Antibody (N-term) is for research use only and not for use in diagnostic or therapeutic procedures.

**HCFC1R1 Antibody (N-term) - Protein Information****Name** HCFC1R1**Synonyms** HPIP

**Function** Regulates HCFC1 activity by modulating its subcellular localization. Overexpression of HCFC1R1 leads to accumulation of HCFC1 in the cytoplasm. HCFC1R1-mediated export may provide the pool of cytoplasmic HCFC1 required for import of virion-derived VP16 into the nucleus.

**Cellular Location**

Cytoplasm. Nucleus. Note=Shuttles between the nucleus and cytoplasm in a CRM1-dependent manner

**Tissue Location**

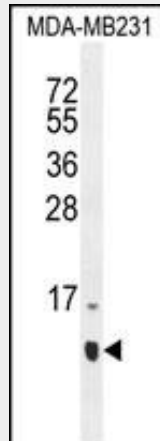
Widely expressed..

**HCFC1R1 Antibody (N-term) - Protocols**

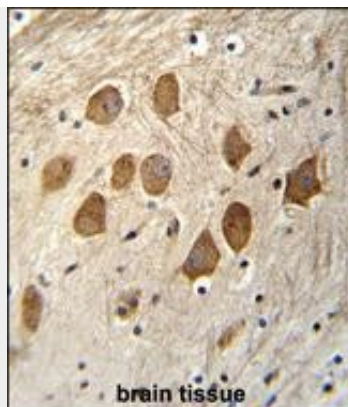
Provided below are standard protocols that you may find useful for product applications.

- [Western Blot](#)
- [Blocking Peptides](#)
- [Dot Blot](#)
- [Immunohistochemistry](#)
- [Immunofluorescence](#)
- [Immunoprecipitation](#)
- [Flow Cytometry](#)
- [Cell Culture](#)

**HCFC1R1 Antibody (N-term) - Images**



HCFC1R1 Antibody (N-term) (Cat. #AP11644a) western blot analysis in MDA-MB231 cell line lysates (35ug/lane). This demonstrates the HCFC1R1 antibody detected the HCFC1R1 protein (arrow).



HCFC1R1 Antibody (N-term) (Cat. #AP11644a) immunohistochemistry analysis in formalin fixed and paraffin embedded human brain tissue followed by peroxidase conjugation of the secondary antibody and DAB staining. This data demonstrates the use of HCFC1R1 Antibody (N-term) for immunohistochemistry. Clinical relevance has not been evaluated.

#### **HCFC1R1 Antibody (N-term) - Background**

Regulates HCFC1 activity by modulating its subcellular localization. Overexpression of HCFC1R1 leads to accumulation of HCFC1 in the cytoplasm. HCFC1R1-mediated export may provide the pool of cytoplasmic HCFC1 required for import of virion-derived VP16 into the nucleus.

#### **HCFC1R1 Antibody (N-term) - References**

Bailey, S.D., et al. Diabetes Care 33(10):2250-2253(2010)  
Talmud, P.J., et al. Am. J. Hum. Genet. 85(5):628-642(2009)  
Lamesch, P., et al. Genomics 89(3):307-315(2007)  
Mahajan, S.S., et al. J. Biol. Chem. 277(46):44292-44299(2002)