

**PTK9L Antibody (N-term)**  
**Affinity Purified Rabbit Polyclonal Antibody (Pab)**  
**Catalog # AP11665a**

**Specification**

---

**PTK9L Antibody (N-term) - Product Information**

Application	WB, IHC-P, FC,E
Primary Accession	<a href="#">Q6IBS0</a>
Other Accession	<a href="#">Q9Z0P5</a> , <a href="#">NP_009215.1</a>
Reactivity	Human, Mouse
Host	Rabbit
Clonality	Polyclonal
Isotype	Rabbit IgG
Calculated MW	39548
Antigen Region	28-57

**PTK9L Antibody (N-term) - Additional Information**

**Gene ID** 11344

**Other Names**

Twinfilin-2, A6-related protein, hA6RP, Protein tyrosine kinase 9-like, Twinfilin-1-like protein, TWF2, PTK9L

**Target/Specificity**

This PTK9L antibody is generated from rabbits immunized with a KLH conjugated synthetic peptide between 28-57 amino acids from the N-terminal region of human PTK9L.

**Dilution**

WB~~1:1000  
IHC-P~~1:50~100  
FC~~1:10~50

**Format**

Purified polyclonal antibody supplied in PBS with 0.09% (W/V) sodium azide. This antibody is purified through a protein A column, followed by peptide affinity purification.

**Storage**

Maintain refrigerated at 2-8°C for up to 2 weeks. For long term storage store at -20°C in small aliquots to prevent freeze-thaw cycles.

**Precautions**

PTK9L Antibody (N-term) is for research use only and not for use in diagnostic or therapeutic procedures.

**PTK9L Antibody (N-term) - Protein Information**

**Name** TWF2

**Synonyms** PTK9L

**Function** Actin-binding protein involved in motile and morphological processes. Inhibits actin polymerization, likely by sequestering G-actin. By capping the barbed ends of filaments, it also regulates motility. Seems to play an important role in clathrin-mediated endocytosis and distribution of endocytic organelles. May play a role in regulating the mature length of the middle and short rows of stereocilia (By similarity).

**Cellular Location**

Cytoplasm, cytoskeleton. Cytoplasm, perinuclear region. Cell projection, stereocilium.  
Note=Perinuclear and G-actin-rich cortical actin structure sublocalization

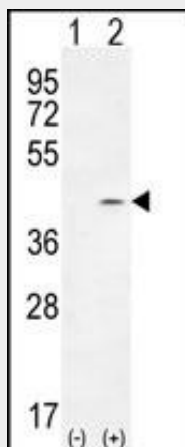
**Tissue Location**

Ubiquitously expressed (at protein level).

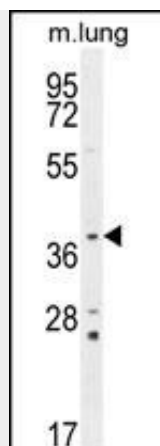
**PTK9L Antibody (N-term) - Protocols**

Provided below are standard protocols that you may find useful for product applications.

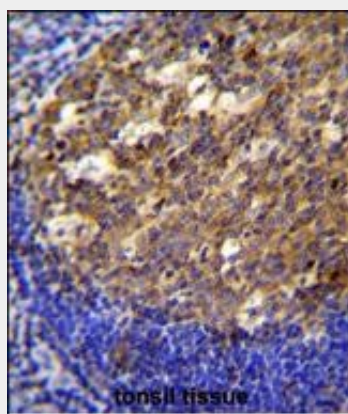
- [Western Blot](#)
- [Blocking Peptides](#)
- [Dot Blot](#)
- [Immunohistochemistry](#)
- [Immunofluorescence](#)
- [Immunoprecipitation](#)
- [Flow Cytometry](#)
- [Cell Culture](#)

**PTK9L Antibody (N-term) - Images**

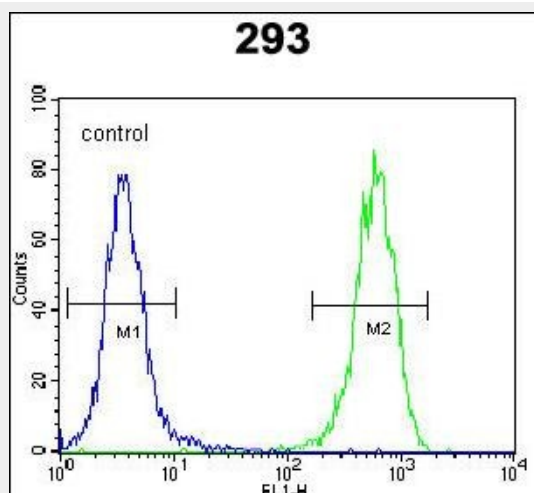
Western blot analysis of PTK9L (arrow) using rabbit polyclonal PTK9L Antibody (N-term) (Cat. #AP11665a). 293 cell lysates (2 ug/lane) either nontransfected (Lane 1) or transiently transfected (Lane 2) with the PTK9L gene.



PTK9L Antibody (N-term) (Cat. #AP11665a) western blot analysis in mouse lung tissue lysates (35ug/lane). This demonstrates the PTK9L antibody detected the PTK9L protein (arrow).



PTK9L Antibody (N-term) (Cat. #AP11665a) immunohistochemistry analysis in formalin fixed and paraffin embedded human tonsil tissue followed by peroxidase conjugation of the secondary antibody and DAB staining. This data demonstrates the use of PTK9L Antibody (N-term) for immunohistochemistry. Clinical relevance has not been evaluated.



PTK9L Antibody (N-term) (Cat. #AP11665a) flow cytometric analysis of 293 cells (right histogram) compared to a negative control cell (left histogram). FITC-conjugated goat-anti-rabbit secondary antibodies were used for the analysis.

#### PTK9L Antibody (N-term) - Background

The protein encoded by this gene was identified by its interaction with the catalytic domain of protein kinase C-zeta. The encoded protein contains an actin-binding site and an ATP-binding site. It is most closely related to twinfilin (PTK9), a conserved actin monomer-binding protein.

#### **PTK9L Antibody (N-term) - References**

Bailey, S.D., et al. Diabetes Care 33(10):2250-2253(2010)  
Han, S., et al. Hum. Immunol. 71(7):727-730(2010)  
Rajaraman, P., et al. Cancer Epidemiol. Biomarkers Prev. 19(5):1356-1361(2010)  
Talmud, P.J., et al. Am. J. Hum. Genet. 85(5):628-642(2009)  
Rajaraman, P., et al. Cancer Epidemiol. Biomarkers Prev. 18(5):1651-1658(2009)