

GPC6 Antibody (C-term)
Purified Rabbit Polyclonal Antibody (Pab)
Catalog # AP11674b**Specification**

GPC6 Antibody (C-term) - Product Information

Application	WB, IHC-P, FC,E
Primary Accession	O9Y625
Other Accession	NP_005699.1
Reactivity	Human
Host	Rabbit
Clonality	Polyclonal
Isotype	Rabbit IgG
Calculated MW	62736
Antigen Region	496-528

GPC6 Antibody (C-term) - Additional Information**Gene ID** 10082**Other Names**

Glypican-6, Secreted glypican-6, GPC6

Target/Specificity

This GPC6 antibody is generated from rabbits immunized with a KLH conjugated synthetic peptide between 496-528 amino acids from the C-terminal region of human GPC6.

Dilution

WB~~1:1000
IHC-P~~1:50~100
FC~~1:10~50

Format

Purified polyclonal antibody supplied in PBS with 0.09% (W/V) sodium azide. This antibody is prepared by Saturated Ammonium Sulfate (SAS) precipitation followed by dialysis against PBS.

Storage

Maintain refrigerated at 2-8°C for up to 2 weeks. For long term storage store at -20°C in small aliquots to prevent freeze-thaw cycles.

Precautions

GPC6 Antibody (C-term) is for research use only and not for use in diagnostic or therapeutic procedures.

GPC6 Antibody (C-term) - Protein Information**Name** GPC6

Function Cell surface proteoglycan that bears heparan sulfate. Putative cell surface coreceptor for growth factors, extracellular matrix proteins, proteases and anti-proteases (By similarity). Enhances migration and invasion of cancer cells through WNT5A signaling.

Cellular Location

Cell membrane; Lipid-anchor, GPI- anchor; Extracellular side

Tissue Location

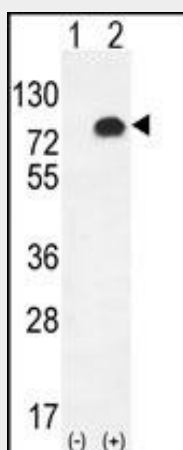
Widely expressed. High expression in fetal kidney and lung and lower expressions in fetal liver and brain. In adult tissues, very abundant in ovary, high levels also observed in liver, kidney, small intestine and colon. Not detected in peripheral blood leukocytes. Detected in breast cancer cells (at protein level)

GPC6 Antibody (C-term) - Protocols

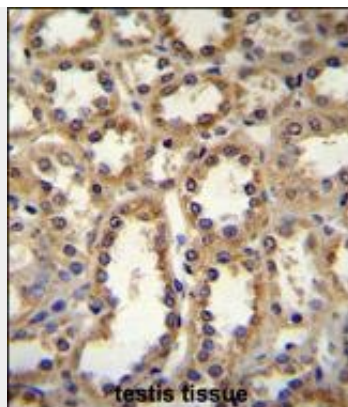
Provided below are standard protocols that you may find useful for product applications.

- [Western Blot](#)
- [Blocking Peptides](#)
- [Dot Blot](#)
- [Immunohistochemistry](#)
- [Immunofluorescence](#)
- [Immunoprecipitation](#)
- [Flow Cytometry](#)
- [Cell Culture](#)

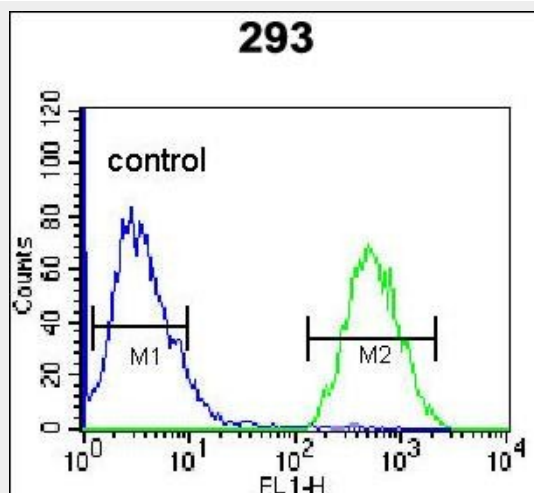
GPC6 Antibody (C-term) - Images



Western blot analysis of GPC6 (arrow) using rabbit polyclonal GPC6 Antibody (C-term) (Cat. #AP11674b). 293 cell lysates (2 ug/lane) either nontransfected (Lane 1) or transiently transfected (Lane 2) with the GPC6 gene.



GPC6 Antibody (C-term) (Cat. #AP11674b) immunohistochemistry analysis in formalin fixed and paraffin embedded human kidney tissue followed by peroxidase conjugation of the secondary antibody and DAB staining. This data demonstrates the use of GPC6 Antibody (C-term) for immunohistochemistry. Clinical relevance has not been evaluated.



GPC6 Antibody (C-term) (Cat. #AP11674b) flow cytometric analysis of 293 cells (right histogram) compared to a negative control cell (left histogram). FITC-conjugated goat-anti-rabbit secondary antibodies were used for the analysis.

GPC6 Antibody (C-term) - Background

The glypicans comprise a family of glycosylphosphatidylinositol-anchored heparan sulfate proteoglycans, and they have been implicated in the control of cell growth and cell division. The glypican encoded by this gene is a putative cell surface coreceptor for growth factors, extracellular matrix proteins, proteases and anti-proteases. [provided by RefSeq].

GPC6 Antibody (C-term) - References

Rose, J.E., et al. Mol. Med. 16 (7-8), 247-253 (2010) :
Lau, C.S., et al. Br J Ophthalmol 94(3):357-362(2010)
Calboli, F.C., et al. PLoS ONE 5 (7), E11504 (2010) :
Wheeler, H.E., et al. PLoS Genet. 5 (10), E1000685 (2009) :
Campos-Xavier, A.B., et al. Am. J. Hum. Genet. 84(6):760-770(2009)