

MEF2D Antibody (N-term)
Affinity Purified Rabbit Polyclonal Antibody (Pab)
Catalog # AP11710a**Specification**

MEF2D Antibody (N-term) - Product Information

Application	WB,E
Primary Accession	Q14814
Other Accession	NP_005911.1
Reactivity	Human
Host	Rabbit
Clonality	Polyclonal
Isotype	Rabbit IgG
Calculated MW	55938
Antigen Region	108-136

MEF2D Antibody (N-term) - Additional Information**Gene ID** 4209**Other Names**

Myocyte-specific enhancer factor 2D, MEF2D

Target/Specificity

This MEF2D antibody is generated from rabbits immunized with a KLH conjugated synthetic peptide between 108-136 amino acids from the N-terminal region of human MEF2D.

Dilution

WB~~1:1000

Format

Purified polyclonal antibody supplied in PBS with 0.09% (W/V) sodium azide. This antibody is purified through a protein A column, followed by peptide affinity purification.

Storage

Maintain refrigerated at 2-8°C for up to 2 weeks. For long term storage store at -20°C in small aliquots to prevent freeze-thaw cycles.

Precautions

MEF2D Antibody (N-term) is for research use only and not for use in diagnostic or therapeutic procedures.

MEF2D Antibody (N-term) - Protein Information**Name** MEF2D

Function Transcriptional activator which binds specifically to the MEF2 element, 5'-YTA[AT](4)TAR-3', found in numerous muscle-specific, growth factor- and stress-induced genes.

Mediates cellular functions not only in skeletal and cardiac muscle development, but also in neuronal differentiation and survival. Plays diverse roles in the control of cell growth, survival and apoptosis via p38 MAPK signaling in muscle-specific and/or growth factor-related transcription. Plays a critical role in the regulation of neuronal apoptosis (By similarity).

Cellular Location

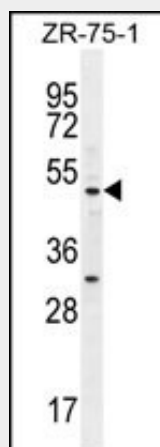
Nucleus {ECO:0000255|PROSITE-ProRule:PRU00251, ECO:0000269|PubMed:12691662, ECO:0000269|PubMed:15743823} Note=Translocated by HDAC4 to nuclear dots

MEF2D Antibody (N-term) - Protocols

Provided below are standard protocols that you may find useful for product applications.

- [Western Blot](#)
- [Blocking Peptides](#)
- [Dot Blot](#)
- [Immunohistochemistry](#)
- [Immunofluorescence](#)
- [Immunoprecipitation](#)
- [Flow Cytometry](#)
- [Cell Culture](#)

MEF2D Antibody (N-term) - Images



MEF2D Antibody (N-term) (Cat. #AP11710a) western blot analysis in ZR-75-1 cell line lysates (35ug/lane). This demonstrates the MEF2D antibody detected the MEF2D protein (arrow).

MEF2D Antibody (N-term) - Background

Transcriptional activator which binds specifically to the MEF2 element, 5'-YTA[AT](4)TAR-3', found in numerous muscle-specific, growth factor-and stress-induced genes. Mediates cellular functions not only in skeletal and cardiac muscle development, but also in neuronal differentiation and survival. Plays diverse roles in the control of cell growth, survival and apoptosis via p38 MAPK signaling in muscle-specific and/or growth factor-related transcription. Plays a critical role in the regulation of neuronal apoptosis (By similarity).

MEF2D Antibody (N-term) - References

Jablonski, K.A., et al. Diabetes 59(10):2672-2681(2010)
Bailey, S.D., et al. Diabetes Care 33(10):2250-2253(2010)

Aude-Garcia, C., et al. Biochem. J. 430(2):237-244(2010)
Czubryt, M.P., et al. J. Biol. Chem. 285(22):16942-16950(2010)
Yoshida, T., et al. Int. J. Mol. Med. 25(4):649-656(2010)