

**HOXB6 Antibody (Center)**  
**Affinity Purified Rabbit Polyclonal Antibody (Pab)**  
**Catalog # AP11711C****Specification**

---

**HOXB6 Antibody (Center) - Product Information**

Application	WB, IHC-P,E
Primary Accession	<a href="#">P17509</a>
Other Accession	<a href="#">P09023</a> , <a href="#">NP_061825.2</a>
Reactivity	Mouse
Host	Rabbit
Clonality	Polyclonal
Isotype	Rabbit IgG
Calculated MW	25432
Antigen Region	128-155

**HOXB6 Antibody (Center) - Additional Information****Gene ID** 3216**Other Names**

Homeobox protein Hox-B6, Homeobox protein Hox-22, Homeobox protein Hox-2B, Homeobox protein Hu-2, HOXB6, HOX2B

**Target/Specificity**

This HOXB6 antibody is generated from rabbits immunized with a KLH conjugated synthetic peptide between 128-155 amino acids from the Central region of human HOXB6.

**Dilution**

WB~~1:1000  
IHC-P~~1:10~50

**Format**

Purified polyclonal antibody supplied in PBS with 0.09% (W/V) sodium azide. This antibody is purified through a protein A column, followed by peptide affinity purification.

**Storage**

Maintain refrigerated at 2-8°C for up to 2 weeks. For long term storage store at -20°C in small aliquots to prevent freeze-thaw cycles.

**Precautions**

HOXB6 Antibody (Center) is for research use only and not for use in diagnostic or therapeutic procedures.

**HOXB6 Antibody (Center) - Protein Information****Name** HOXB6

**Synonyms** HOX2B

**Function** Sequence-specific transcription factor which is part of a developmental regulatory system that provides cells with specific positional identities on the anterior-posterior axis.

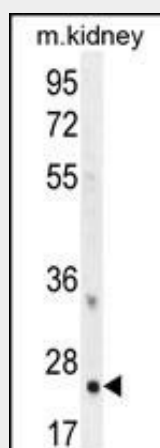
**Cellular Location**

Nucleus.

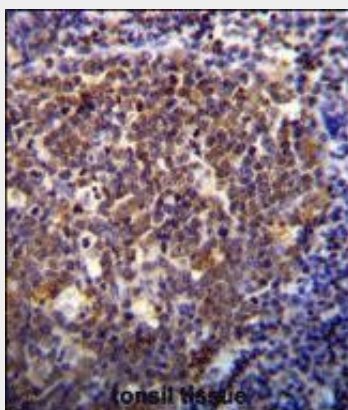
**HOXB6 Antibody (Center) - Protocols**

Provided below are standard protocols that you may find useful for product applications.

- [Western Blot](#)
- [Blocking Peptides](#)
- [Dot Blot](#)
- [Immunohistochemistry](#)
- [Immunofluorescence](#)
- [Immunoprecipitation](#)
- [Flow Cytometry](#)
- [Cell Culture](#)

**HOXB6 Antibody (Center) - Images**

HOXB6 Antibody (Center) (Cat. #AP11711c) western blot analysis in mouse kidney tissue lysates (35ug/lane). This demonstrates the HOXB6 antibody detected the HOXB6 protein (arrow).



HOXB6 Antibody (Center) (Cat. #AP11711c) immunohistochemistry analysis in formalin fixed and

paraffin embedded human tonsil tissue followed by peroxidase conjugation of the secondary antibody and DAB staining. This data demonstrates the use of HOXB6 Antibody (Center) for immunohistochemistry. Clinical relevance has not been evaluated.

#### **HOXB6 Antibody (Center) - Background**

This gene is a member of the Antp homeobox family and encodes a protein with a homeobox DNA-binding domain. It is included in a cluster of homeobox B genes located on chromosome 17. The encoded protein functions as a sequence-specific transcription factor that is involved in development, including that of lung and skin, and has been localized to both the nucleus and cytoplasm. Altered expression of this gene or a change in the subcellular localization of its protein is associated with some cases of acute myeloid leukemia and colorectal cancer.

#### **HOXB6 Antibody (Center) - References**

Ferrai, C., et al. Mol. Biol. Cell 20(15):3543-3551(2009)  
Matsuoka, S., et al. Science 316(5828):1160-1166(2007)  
Lamesch, P., et al. Genomics 89(3):307-315(2007)  
Chen, T., et al. Eur. J. Hum. Genet. 15(1):23-28(2007)  
Shen, W., et al. J. Biol. Chem. 279(38):39895-39904(2004)