

ZNF860 Antibody (C-term)
Affinity Purified Rabbit Polyclonal Antibody (Pab)
Catalog # AP11752b**Specification**

ZNF860 Antibody (C-term) - Product Information

Application	WB,E
Primary Accession	A6NHJ4
Other Accession	NP_001131146.1
Reactivity	Human
Host	Rabbit
Clonality	Polyclonal
Isotype	Rabbit IgG
Calculated MW	73757
Antigen Region	601-629

ZNF860 Antibody (C-term) - Additional Information**Gene ID** 344787**Other Names**

Zinc finger protein 860, ZNF860

Target/Specificity

This ZNF860 antibody is generated from rabbits immunized with a KLH conjugated synthetic peptide between 601-629 amino acids from the C-terminal region of human ZNF860.

Dilution

WB~~1:1000

Format

Purified polyclonal antibody supplied in PBS with 0.09% (W/V) sodium azide. This antibody is purified through a protein A column, followed by peptide affinity purification.

Storage

Maintain refrigerated at 2-8°C for up to 2 weeks. For long term storage store at -20°C in small aliquots to prevent freeze-thaw cycles.

Precautions

ZNF860 Antibody (C-term) is for research use only and not for use in diagnostic or therapeutic procedures.

ZNF860 Antibody (C-term) - Protein Information**Name** ZNF860**Function** May be involved in transcriptional regulation.

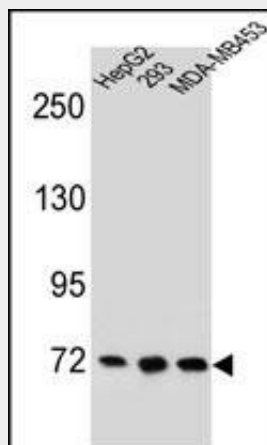
Cellular Location

Nucleus.

ZNF860 Antibody (C-term) - Protocols

Provided below are standard protocols that you may find useful for product applications.

- [Western Blot](#)
- [Blocking Peptides](#)
- [Dot Blot](#)
- [Immunohistochemistry](#)
- [Immunofluorescence](#)
- [Immunoprecipitation](#)
- [Flow Cytometry](#)
- [Cell Culture](#)

ZNF860 Antibody (C-term) - Images

ZNF860 Antibody (C-term) (Cat. #AP11752b) western blot analysis in HepG2,293,MDA-MB453 cell line lysates (35ug/lane).This demonstrates the ZNF860 antibody detected the ZNF860 protein (arrow).

ZNF860 Antibody (C-term) - Background

ZNF860 may be involved in transcriptional regulation (By similarity).

ZNF860 Antibody (C-term) - References

Muzny, D.M., et al. Nature 440(7088):1194-1198(2006)