

**PALM3 Antibody (C-term)**  
**Affinity Purified Rabbit Polyclonal Antibody (Pab)**  
**Catalog # AP11758b**

**Specification**

---

**PALM3 Antibody (C-term) - Product Information**

Application	WB, IHC-P, FC,E
Primary Accession	<a href="#">A6NDB9</a>
Other Accession	<a href="#">NP_001138500.1</a>
Reactivity	Human
Host	Rabbit
Clonality	Polyclonal
Isotype	Rabbit IgG
Antigen Region	546-574

**PALM3 Antibody (C-term) - Additional Information**

**Gene ID** 342979

**Other Names**

Paralemmin-3, PALM3

**Target/Specificity**

This PALM3 antibody is generated from rabbits immunized with a KLH conjugated synthetic peptide between 546-574 amino acids from the C-terminal region of human PALM3.

**Dilution**

WB~~1:1000  
IHC-P~~1:10~50  
FC~~1:10~50

**Format**

Purified polyclonal antibody supplied in PBS with 0.09% (W/V) sodium azide. This antibody is purified through a protein A column, followed by peptide affinity purification.

**Storage**

Maintain refrigerated at 2-8°C for up to 2 weeks. For long term storage store at -20°C in small aliquots to prevent freeze-thaw cycles.

**Precautions**

PALM3 Antibody (C-term) is for research use only and not for use in diagnostic or therapeutic procedures.

**PALM3 Antibody (C-term) - Protein Information**

**Name** PALM3

**Function** ATP-binding protein, which may act as a adapter in the Toll- like receptor (TLR)

signaling.

#### **Cellular Location**

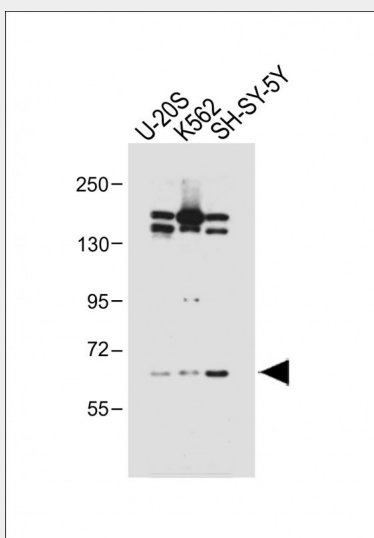
Cytoplasm. Cell membrane; Lipid-anchor

#### **PALM3 Antibody (C-term) - Protocols**

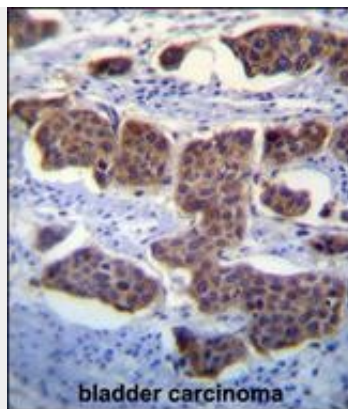
Provided below are standard protocols that you may find useful for product applications.

- [Western Blot](#)
- [Blocking Peptides](#)
- [Dot Blot](#)
- [Immunohistochemistry](#)
- [Immunofluorescence](#)
- [Immunoprecipitation](#)
- [Flow Cytometry](#)
- [Cell Culture](#)

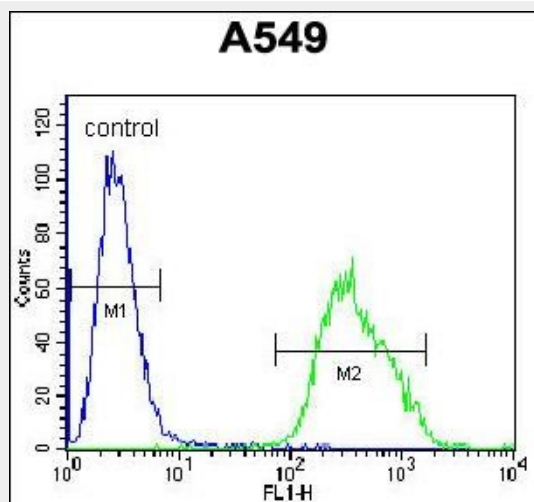
#### **PALM3 Antibody (C-term) - Images**



All lanes : Anti-PALM3 Antibody (C-term) at 1:1000 dilution Lane 1: U-20S whole cell lysate Lane 2: K562 whole cell lysate Lane 3: SH-SY-5Y whole cell lysate Lysates/proteins at 20 µg per lane. Secondary Goat Anti-Rabbit IgG, (H+L), Peroxidase conjugated at 1/10000 dilution. Predicted band size : 72 kDa Blocking/Dilution buffer: 5% NFDM/TBST.



PALM3 Antibody (C-term) (Cat. #AP11758b) immunohistochemistry analysis in formalin fixed and paraffin embedded human bladder carcinoma followed by peroxidase conjugation of the secondary antibody and DAB staining. This data demonstrates the use of PALM3 Antibody (C-term) for immunohistochemistry. Clinical relevance has not been evaluated.



PALM3 Antibody (C-term) (Cat. #AP11758b) flow cytometric analysis of A549 cells (right histogram) compared to a negative control cell (left histogram). FITC-conjugated goat-anti-rabbit secondary antibodies were used for the analysis.

#### **PALM3 Antibody (C-term) - Background**

PALM3 is a ATP-binding protein (By similarity).

#### **PALM3 Antibody (C-term) - References**

Grimwood, J., et al. Nature 428(6982):529-535(2004)

#### **PALM3 Antibody (C-term) - Citations**

- [Extensive quantitative remodeling of the proteome between normal colon tissue and adenocarcinoma.](#)