

RHOJ Antibody (Center)
Affinity Purified Rabbit Polyclonal Antibody (Pab)
Catalog # AP11763c**Specification**

RHOJ Antibody (Center) - Product Information

Application	WB, IHC-P,E
Primary Accession	O9H4E5
Other Accession	O9ER71 , NP_065714.1
Reactivity	Human
Predicted	Mouse
Host	Rabbit
Clonality	Polyclonal
Isotype	Rabbit IgG
Calculated MW	23821
Antigen Region	131-159

RHOJ Antibody (Center) - Additional Information**Gene ID** 57381**Other Names**

Rho-related GTP-binding protein RhoJ, Ras-like protein family member 7B, Tc10-like GTP-binding protein, RHOJ, ARHJ, RASL7B, RHOI, TCL

Target/Specificity

This RHOJ antibody is generated from rabbits immunized with a KLH conjugated synthetic peptide between 131-159 amino acids from the Central region of human RHOJ.

Dilution

WB~~1:1000
IHC-P~~1:10~50

Format

Purified polyclonal antibody supplied in PBS with 0.09% (W/V) sodium azide. This antibody is purified through a protein A column, followed by peptide affinity purification.

Storage

Maintain refrigerated at 2-8°C for up to 2 weeks. For long term storage store at -20°C in small aliquots to prevent freeze-thaw cycles.

Precautions

RHOJ Antibody (Center) is for research use only and not for use in diagnostic or therapeutic procedures.

RHOJ Antibody (Center) - Protein Information**Name** RHOJ

Function Plasma membrane-associated small GTPase specifically involved in angiogenesis (PubMed:[21628409](#), PubMed:[24434213](#), PubMed:[30158707](#)). Required for endothelial cell migration during vascular development via its interaction with GLUL (PubMed:[30158707](#)). Elicits the formation of F-actin-rich structures, thereby regulating endothelial cell migration (PubMed:[30158707](#)).

Cellular Location

Cell membrane; Lipid-anchor; Cytoplasmic side Note=Localization to the plasma membrane is regulated by GLUL

Tissue Location

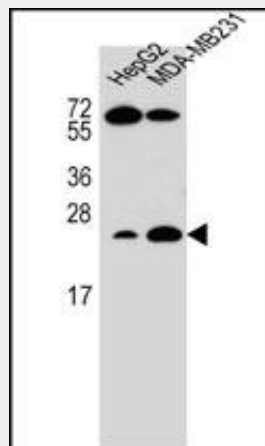
Specifically expressed in endothelial cells in different tissues, such as brain, heart, lung and liver

RHOJ Antibody (Center) - Protocols

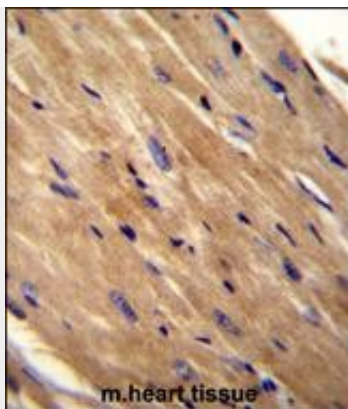
Provided below are standard protocols that you may find useful for product applications.

- [Western Blot](#)
- [Blocking Peptides](#)
- [Dot Blot](#)
- [Immunohistochemistry](#)
- [Immunofluorescence](#)
- [Immunoprecipitation](#)
- [Flow Cytometry](#)
- [Cell Culture](#)

RHOJ Antibody (Center) - Images



RHOJ Antibody (Center) (Cat. #AP11763c) western blot analysis in HepG2,MDA-MB231 cell line lysates (35ug/lane).This demonstrates the RHOJ antibody detected the RHOJ protein (arrow).



RHOJ Antibody (Center) (Cat. #AP11763c) immunohistochemistry analysis in formalin fixed and paraffin embedded mouse heart tissue followed by peroxidase conjugation of the secondary antibody and DAB staining. This data demonstrates the use of RHOJ Antibody (Center) for immunohistochemistry. Clinical relevance has not been evaluated.

RHOJ Antibody (Center) - Background

ARHJ belongs to the Rho family of small GTP-binding proteins. Rho proteins regulate the dynamic assembly of cytoskeletal components for several physiologic processes, such as cell proliferation and motility and the establishment of cell polarity. They are also involved in pathophysiologic process, such as cell transformation and metastasis.

RHOJ Antibody (Center) - References

Rose, J.E., et al. Mol. Med. 16 (7-8), 247-253 (2010) :
Lamesch, P., et al. Genomics 89(3):307-315(2007)
Barrios-Rodiles, M., et al. Science 307(5715):1621-1625(2005)
Nishikimi, A., et al. FEBS Lett. 579(5):1039-1046(2005)
Ruusala, A., et al. FEBS Lett. 572 (1-3), 159-166 (2004) :