

**CSAD Antibody (Center)**  
**Affinity Purified Rabbit Polyclonal Antibody (Pab)**  
**Catalog # AP11783c****Specification**

---

**CSAD Antibody (Center) - Product Information**

Application	WB, IHC-P,E
Primary Accession	<a href="#">O9Y600</a>
Other Accession	<a href="#">NP_057073.4</a>
Reactivity	Human
Host	Rabbit
Clonality	Polyclonal
Isotype	Rabbit IgG
Calculated MW	55023
Antigen Region	197-226

**CSAD Antibody (Center) - Additional Information****Gene ID** 51380**Other Names**

Cysteine sulfinic acid decarboxylase, Cysteine-sulfinic acid decarboxylase, Sulfinoalanine decarboxylase, CSAD, CSD

**Target/Specificity**

This CSAD antibody is generated from rabbits immunized with a KLH conjugated synthetic peptide between 197-226 amino acids from the Central region of human CSAD.

**Dilution**WB~~1:1000  
IHC-P~~1:50~100**Format**

Purified polyclonal antibody supplied in PBS with 0.09% (W/V) sodium azide. This antibody is purified through a protein A column, followed by peptide affinity purification.

**Storage**

Maintain refrigerated at 2-8°C for up to 2 weeks. For long term storage store at -20°C in small aliquots to prevent freeze-thaw cycles.

**Precautions**

CSAD Antibody (Center) is for research use only and not for use in diagnostic or therapeutic procedures.

**CSAD Antibody (Center) - Protein Information****Name** CSAD

## Synonyms CSD

**Function** Catalyzes the decarboxylation of L-aspartate, 3-sulfinio-L- alanine (cysteine sulfinic acid), and L-cysteate to beta-alanine, hypotaurine and taurine, respectively. The preferred substrate is 3-sulfinio-L-alanine. Does not exhibit any decarboxylation activity toward glutamate.

## Tissue Location

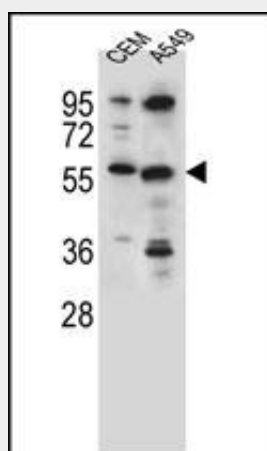
Expressed in liver and brain. Also expressed in both astrocytes and neurons, but lower levels are expressed in astrocytes.

## CSAD Antibody (Center) - Protocols

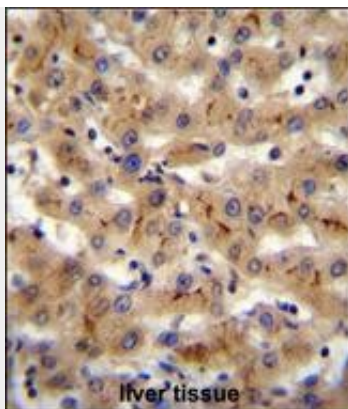
Provided below are standard protocols that you may find useful for product applications.

- [Western Blot](#)
- [Blocking Peptides](#)
- [Dot Blot](#)
- [Immunohistochemistry](#)
- [Immunofluorescence](#)
- [Immunoprecipitation](#)
- [Flow Cytometry](#)
- [Cell Culture](#)

## CSAD Antibody (Center) - Images



CSAD Antibody (Center) (Cat. #AP11783c) western blot analysis in CEM,A549 cell line lysates (35ug/lane).This demonstrates the CSAD antibody detected the CSAD protein (arrow).



CSAD Antibody (Center) (Cat. #AP11783c) immunohistochemistry analysis in formalin fixed and paraffin embedded human liver tissue followed by peroxidase conjugation of the secondary antibody and DAB staining. This data demonstrates the use of CSAD Antibody (Center) for immunohistochemistry. Clinical relevance has not been evaluated.

#### **CSAD Antibody (Center) - Background**

Cysteine sulfinic acid decarboxylase (CSAD) catalyses the penultimate and rate limiting step of taurine synthesis. Taurine is an amino sulphonic acid and is one of the most abundant amino acids in the brain. It has been found to be essential to a number of biological processes such as development of the brain and eye, reproduction, diabetes, osmoregulation as well as the anti-inflammatory activity of leukocytes.

#### **CSAD Antibody (Center) - References**

Park, E., et al. Biochim. Biophys. Acta 1574(3):403-406(2002)