

**PTPN20A Antibody (Center)**  
**Affinity Purified Rabbit Polyclonal Antibody (Pab)**  
**Catalog # AP11798c**

**Specification**

---

**PTPN20A Antibody (Center) - Product Information**

Application	WB, IHC-P, FC,E
Primary Accession	<a href="#">O4JDL3</a>
Other Accession	<a href="#">NP_001035817.1</a> , <a href="#">NP_001035853.1</a> , <a href="#">NP_001035849.1</a>
Reactivity	Human
Host	Rabbit
Clonality	Polyclonal
Isotype	Rabbit IgG
Calculated MW	48423
Antigen Region	178-207

**PTPN20A Antibody (Center) - Additional Information**

**Gene ID** 26095

**Other Names**

Tyrosine-protein phosphatase non-receptor type 20, hPTPN20, PTPN20A

**Target/Specificity**

This PTPN20A antibody is generated from rabbits immunized with a KLH conjugated synthetic peptide between 178-207 amino acids from the Central region of human PTPN20A.

**Dilution**

WB~~1:1000  
IHC-P~~1:10~50  
FC~~1:10~50

**Format**

Purified polyclonal antibody supplied in PBS with 0.09% (W/V) sodium azide. This antibody is purified through a protein A column, followed by peptide affinity purification.

**Storage**

Maintain refrigerated at 2-8°C for up to 2 weeks. For long term storage store at -20°C in small aliquots to prevent freeze-thaw cycles.

**Precautions**

PTPN20A Antibody (Center) is for research use only and not for use in diagnostic or therapeutic procedures.

**PTPN20A Antibody (Center) - Protein Information**

**Name** PTPN20 ([HGNC:23423](#))

**Function** Tyrosine-protein phosphatase targeted to sites of actin polymerization in response of varied extracellular stimuli. Has tyrosine phosphatase activity towards various tyrosyl phosphorylated substrates.

**Cellular Location**

Nucleus. Cytoplasm. Cytoplasm, cytoskeleton, microtubule organizing center, centrosome  
Note=Colocalizes with the microtubule-organizing center and intracellular membrane compartments

**Tissue Location**

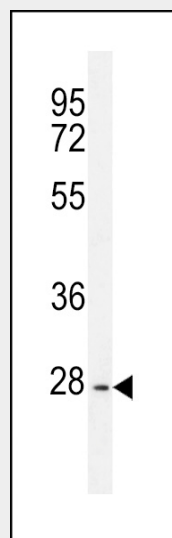
Present in many cell lines (at protein level). Widely expressed.

**PTPN20A Antibody (Center) - Protocols**

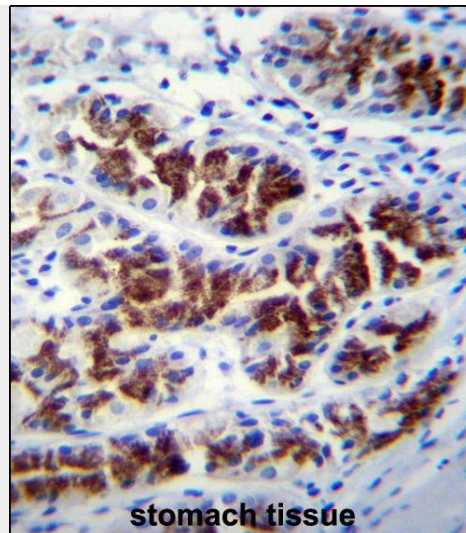
Provided below are standard protocols that you may find useful for product applications.

- [Western Blot](#)
- [Blocking Peptides](#)
- [Dot Blot](#)
- [Immunohistochemistry](#)
- [Immunofluorescence](#)
- [Immunoprecipitation](#)
- [Flow Cytometry](#)
- [Cell Culture](#)

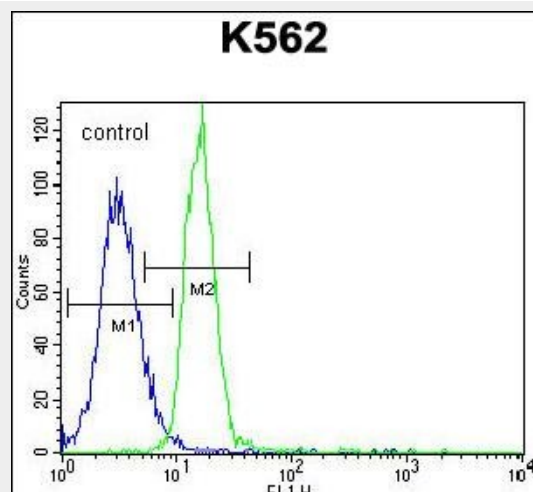
**PTPN20A Antibody (Center) - Images**



PTPN20A Antibody (Center) (Cat. #AP11798c) western blot analysis in K562 cell line lysates (35ug/lane). This demonstrates the PTPN20A antibody detected the PTPN20A protein (arrow).



PTPN20A Antibody (Center) (Cat. #AP11798c) immunohistochemistry analysis in formalin fixed and paraffin embedded human stomach tissue followed by peroxidase conjugation of the secondary antibody and DAB staining. This data demonstrates the use of PTPN20A Antibody (Center) for immunohistochemistry. Clinical relevance has not been evaluated.



PTPN20A Antibody (Center) (Cat. #AP11798c) flow cytometric analysis of K562 cells (right histogram) compared to a negative control cell (left histogram). FITC-conjugated goat-anti-rabbit secondary antibodies were used for the analysis.

### **PTPN20A Antibody (Center) - Background**

The product of this gene belongs to the family of classical tyrosine-specific protein tyrosine phosphatases. Many protein tyrosine phosphatases have been shown to regulate fundamental cellular processes and several are mutated in human diseases. Chromosome 10q contains a segmental duplication resulting in multiple copies of the protein tyrosine phosphatase, non-receptor type 20 gene. The two nearly identical copies are designated as PTPN20A and PTPN20B. A third copy is only partially duplicated and contains a pseudogene, designated as PTPN20C. This gene encodes the more telomeric copy, PTPN20B. Multiple alternatively spliced transcript variants encoding different isoforms have been identified.

## **PTPN20A Antibody (Center) - References**

Matsuoka, S., et al. Science 316(5828):1160-1166(2007)

Fodero-Tavoletti, M.T., et al. Biochem. J. 389 (PT 2), 343-354 (2005) :