

ODF3 Antibody (C-term)
Affinity Purified Rabbit Polyclonal Antibody (Pab)
Catalog # AP11800b**Specification**

ODF3 Antibody (C-term) - Product Information

Application	WB, IHC-P,E
Primary Accession	O96PU9
Other Accession	NP_444510.2
Reactivity	Mouse
Host	Rabbit
Clonality	Polyclonal
Isotype	Rabbit IgG
Calculated MW	27710
Antigen Region	170-199

ODF3 Antibody (C-term) - Additional Information**Gene ID** 113746**Other Names**

Outer dense fiber protein 3, Outer dense fiber of sperm tails protein 3, Sperm tail protein SHIPPO 1, Transcript induced in spermiogenesis protein 50, ODF3, SHIPPO1, TISP50

Target/Specificity

This ODF3 antibody is generated from rabbits immunized with a KLH conjugated synthetic peptide between 170-199 amino acids from the C-terminal region of human ODF3.

Dilution

WB~~1:1000
IHC-P~~1:50~100

Format

Purified polyclonal antibody supplied in PBS with 0.09% (W/V) sodium azide. This antibody is purified through a protein A column, followed by peptide affinity purification.

Storage

Maintain refrigerated at 2-8°C for up to 2 weeks. For long term storage store at -20°C in small aliquots to prevent freeze-thaw cycles.

Precautions

ODF3 Antibody (C-term) is for research use only and not for use in diagnostic or therapeutic procedures.

ODF3 Antibody (C-term) - Protein Information**Name** CIMAP1A ([HGNC:19905](#))

Function Outer dense fibers are filamentous structures located on the outside of the axoneme in the midpiece and principal piece of the mammalian sperm tail. May help to maintain the passive elastic structures and elastic recoil of the sperm tail.

Cellular Location

Cytoplasm {ECO:0000250|UniProtKB:Q920N1}. Cell projection, cilium, flagellum
{ECO:0000250|UniProtKB:Q920N1} Note=Expressed in the cytoplasmic lobe of spermatids
{ECO:0000250|UniProtKB:Q920N1}

Tissue Location

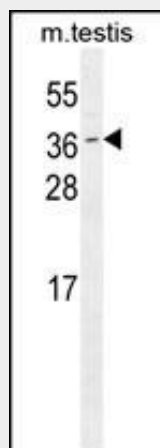
Testis-specific. {ECO:0000269|PubMed:11870087, ECO:0000269|Ref.2}

ODF3 Antibody (C-term) - Protocols

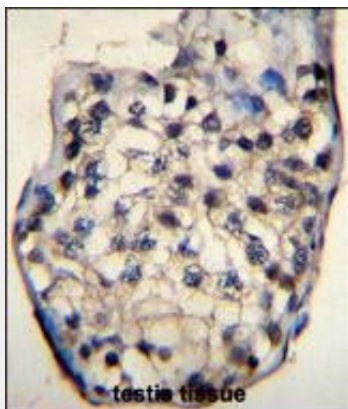
Provided below are standard protocols that you may find useful for product applications.

- [Western Blot](#)
- [Blocking Peptides](#)
- [Dot Blot](#)
- [Immunohistochemistry](#)
- [Immunofluorescence](#)
- [Immunoprecipitation](#)
- [Flow Cytometry](#)
- [Cell Culture](#)

ODF3 Antibody (C-term) - Images



ODF3 Antibody (C-term) (Cat. #AP11800b) western blot analysis in mouse testis tissue lysates (35ug/lane). This demonstrates the ODF3 antibody detected the ODF3 protein (arrow).



ODF3 Antibody (C-term) (Cat. #AP11800b) immunohistochemistry analysis in formalin fixed and paraffin embedded human testis tissue followed by peroxidase conjugation of the secondary antibody and DAB staining. This data demonstrates the use of ODF3 Antibody (C-term) for immunohistochemistry. Clinical relevance has not been evaluated.

ODF3 Antibody (C-term) - Background

ODF3 is a component of sperm flagella outer dense fibers, which add stiffness, elastic recoil, and protection against shearing forces during sperm movement.

ODF3 Antibody (C-term) - References

Soranzo, N., et al. Nat. Genet. 41(11):1182-1190(2009)
Egydio de Carvalho, C., et al. Biol. Reprod. 66(3):785-795(2002)