

**MYBPHL Antibody (N-term)**  
**Affinity Purified Rabbit Polyclonal Antibody (Pab)**  
**Catalog # AP11820A****Specification**

---

**MYBPHL Antibody (N-term) - Product Information**

Application	IF, WB, IHC-P, FC,E
Primary Accession	<a href="#">A2RUH7</a>
Other Accession	<a href="#">NP_001010985.2</a>
Reactivity	Human
Host	Rabbit
Clonality	Polyclonal
Isotype	Rabbit IgG
Calculated MW	38733
Antigen Region	80-108

**MYBPHL Antibody (N-term) - Additional Information****Gene ID** 343263**Other Names**

Myosin-binding protein H-like, MYBPHL

**Target/Specificity**

This MYBPHL antibody is generated from rabbits immunized with a KLH conjugated synthetic peptide between 80-108 amino acids from the N-terminal region of human MYBPHL.

**Dilution**

IF~~1:10~50  
WB~~1:1000  
IHC-P~~1:10~50  
FC~~1:10~50

**Format**

Purified polyclonal antibody supplied in PBS with 0.09% (W/V) sodium azide. This antibody is purified through a protein A column, followed by peptide affinity purification.

**Storage**

Maintain refrigerated at 2-8°C for up to 2 weeks. For long term storage store at -20°C in small aliquots to prevent freeze-thaw cycles.

**Precautions**

MYBPHL Antibody (N-term) is for research use only and not for use in diagnostic or therapeutic procedures.

**MYBPHL Antibody (N-term) - Protein Information****Name** MYBPHL ([HGNC:30434](#))

**Function** Myosin-binding protein which plays a role in cardiac function (PubMed:[28778945](#)). Seems to regulate conduction in the atria and ventricular conduction systems (PubMed:[28778945](#)).

**Cellular Location**

Cytoplasm, myofibril, sarcomere

**Tissue Location**

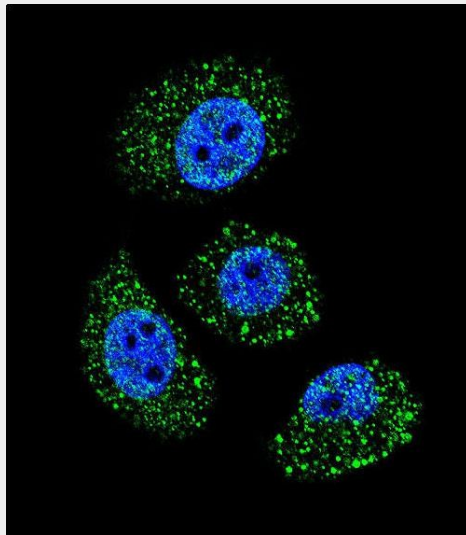
Expressed in heart, with higher expression in the atria. [Isoform 2]: Expressed specifically in the left atrium.

**MYBPHL Antibody (N-term) - Protocols**

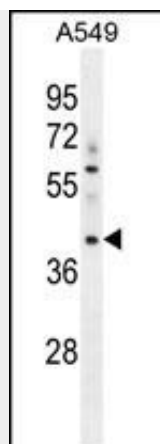
Provided below are standard protocols that you may find useful for product applications.

- [Western Blot](#)
- [Blocking Peptides](#)
- [Dot Blot](#)
- [Immunohistochemistry](#)
- [Immunofluorescence](#)
- [Immunoprecipitation](#)
- [Flow Cytometry](#)
- [Cell Culture](#)

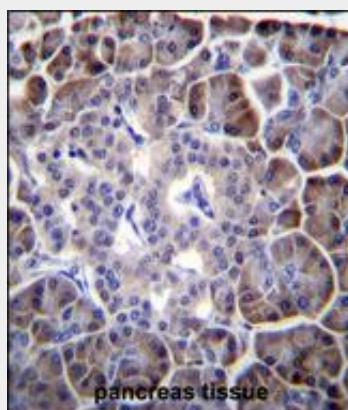
**MYBPHL Antibody (N-term) - Images**



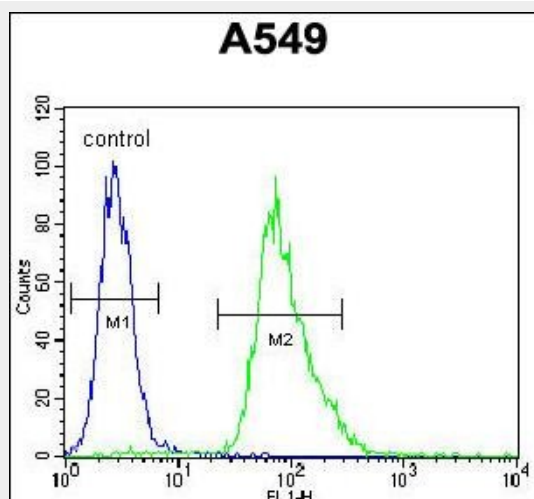
Confocal immunofluorescent analysis of MYBPHL Antibody (N-term)(Cat#AP11820a) with A549 cell followed by Alexa Fluor 488-conjugated goat anti-rabbit IgG (green). DAPI was used to stain the cell nuclear (blue).



MYBPHL Antibody (N-term) (Cat. #AP11820a) western blot analysis in A549 cell line lysates (35ug/lane). This demonstrates the MYBPHL antibody detected the MYBPHL protein (arrow).



MYBPHL Antibody (N-term) (Cat. #AP11820a) immunohistochemistry analysis in formalin fixed and paraffin embedded human pancreas tissue followed by peroxidase conjugation of the secondary antibody and DAB staining. This data demonstrates the use of MYBPHL Antibody (N-term) for immunohistochemistry. Clinical relevance has not been evaluated.



MYBPHL Antibody (N-term) (Cat. #AP11820a) flow cytometric analysis of A549 cells (right histogram) compared to a negative control cell (left histogram). FITC-conjugated goat-anti-rabbit secondary antibodies were used for the analysis.

#### MYBPHL Antibody (N-term) - References

Strausberg, R.L., et al. Proc. Natl. Acad. Sci. U.S.A. 99(26):16899-16903(2002)