

COL13A1 Antibody (N-term)
Affinity Purified Rabbit Polyclonal Antibody (Pab)
Catalog # AP11858a**Specification**

COL13A1 Antibody (N-term) - Product Information

Application	WB, IHC-P,E
Primary Accession	Q5TAT6
Other Accession	Q9R1N9 , NP_542990.3 , NP_001123575.1 , NP_542991.3
Reactivity	Human
Predicted	Mouse
Host	Rabbit
Clonality	Polyclonal
Isotype	Rabbit IgG
Antigen Region	53-81

COL13A1 Antibody (N-term) - Additional Information**Gene ID** 1305**Other Names**

Collagen alpha-1(XIII) chain, COLXIII A1, COL13A1 (HGNC:2190)

Target/Specificity

This COL13A1 antibody is generated from rabbits immunized with a KLH conjugated synthetic peptide between 53-81 amino acids from the N-terminal region of human COL13A1.

Dilution

WB~~1:1000
IHC-P~~1:10~50

Format

Purified polyclonal antibody supplied in PBS with 0.09% (W/V) sodium azide. This antibody is purified through a protein A column, followed by peptide affinity purification.

Storage

Maintain refrigerated at 2-8°C for up to 2 weeks. For long term storage store at -20°C in small aliquots to prevent freeze-thaw cycles.

Precautions

COL13A1 Antibody (N-term) is for research use only and not for use in diagnostic or therapeutic procedures.

COL13A1 Antibody (N-term) - Protein Information

Name COL13A1 ([HGNC:2190](#))

Function Involved in cell-matrix and cell-cell adhesion interactions that are required for normal development. May participate in the linkage between muscle fiber and basement membrane. May play a role in endochondral ossification of bone and branching morphogenesis of lung. Binds heparin. At neuromuscular junctions, may play a role in acetylcholine receptor clustering (PubMed:[26626625](#)).

Cellular Location

Cell membrane; Single-pass type II membrane protein Postsynaptic cell membrane

Tissue Location

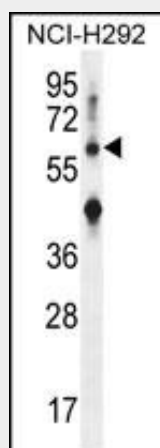
Widely expressed in both fetal and adult ocular tissues (at protein level). In the eye, expression is accentuated in the ciliary muscle, optic nerve and the neural retina. In early placenta, localized to fibroblastoid stromal cells of the placental villi, to endothelial cells of developing capillaries and to cells of the cytotrophoblastic columns. Also detected in large decidual cells of the decidual membrane and to stromal cells of the gestational endometrium, but not in the epithelial cells in the endometrial glands Isoform 10: Expressed in muscle (PubMed:[26626625](#))

COL13A1 Antibody (N-term) - Protocols

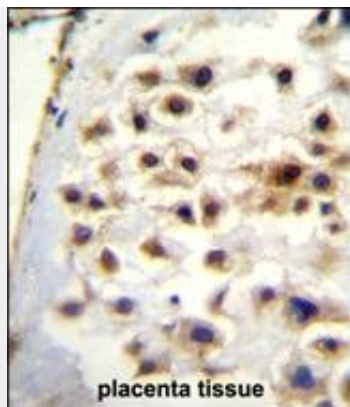
Provided below are standard protocols that you may find useful for product applications.

- [Western Blot](#)
- [Blocking Peptides](#)
- [Dot Blot](#)
- [Immunohistochemistry](#)
- [Immunofluorescence](#)
- [Immunoprecipitation](#)
- [Flow Cytometry](#)
- [Cell Culture](#)

COL13A1 Antibody (N-term) - Images



COL13A1 Antibody (N-term) (Cat. #AP11858a) western blot analysis in NCI-H292 cell line lysates (35ug/lane). This demonstrates the COL13A1 antibody detected the COL13A1 protein (arrow).



COL13A1 Antibody (N-term) (Cat. #AP11858a) immunohistochemistry analysis in formalin fixed and paraffin embedded human placenta tissue followed by peroxidase conjugation of the secondary antibody and DAB staining. This data demonstrates the use of COL13A1 Antibody (N-term) for immunohistochemistry. Clinical relevance has not been evaluated.

COL13A1 Antibody (N-term) - Background

Involved in cell-matrix and cell-cell adhesion interactions that are required for normal development. May participate in the linkage between muscle fiber and basement membrane. May play a role in endochondral ossification of bone and branching morphogenesis of lung. Binds heparin.