

**TBC1D13 Antibody (Center)**  
**Affinity Purified Rabbit Polyclonal Antibody (Pab)**  
**Catalog # AP11876c****Specification**

---

**TBC1D13 Antibody (Center) - Product Information**

Application	WB, IF, IHC-P,E
Primary Accession	<a href="#">Q9NVG8</a>
Other Accession	<a href="#">NP_060671</a>
Reactivity	Human, Mouse
Host	Rabbit
Clonality	Polyclonal
Isotype	Rabbit IgG
Calculated MW	46554
Antigen Region	76-105

**TBC1D13 Antibody (Center) - Additional Information****Gene ID** 54662**Other Names**

TBC1 domain family member 13, TBC1D13

**Target/Specificity**

This TBC1D13 antibody is generated from rabbits immunized with a KLH conjugated synthetic peptide between 76-105 amino acids from the Central region of human TBC1D13.

**Dilution**

WB~~1:1000  
IF~~1:10~50  
IHC-P~~1:50~100

**Format**

Purified polyclonal antibody supplied in PBS with 0.09% (W/V) sodium azide. This antibody is purified through a protein A column, followed by peptide affinity purification.

**Storage**

Maintain refrigerated at 2-8°C for up to 2 weeks. For long term storage store at -20°C in small aliquots to prevent freeze-thaw cycles.

**Precautions**

TBC1D13 Antibody (Center) is for research use only and not for use in diagnostic or therapeutic procedures.

**TBC1D13 Antibody (Center) - Protein Information****Name** TBC1D13

**Function** Acts as a GTPase-activating protein for RAB35. Together with RAB35 may be involved in regulation of insulin-induced glucose transporter SLC2A4/GLUT4 translocation to the plasma membrane in adipocytes.

**Cellular Location**

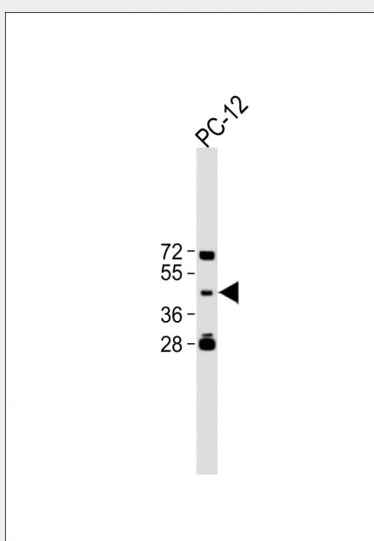
Membrane {ECO:0000250|UniProtKB:Q8R3D1}. Cytoplasm {ECO:0000250|UniProtKB:Q8R3D1}

**TBC1D13 Antibody (Center) - Protocols**

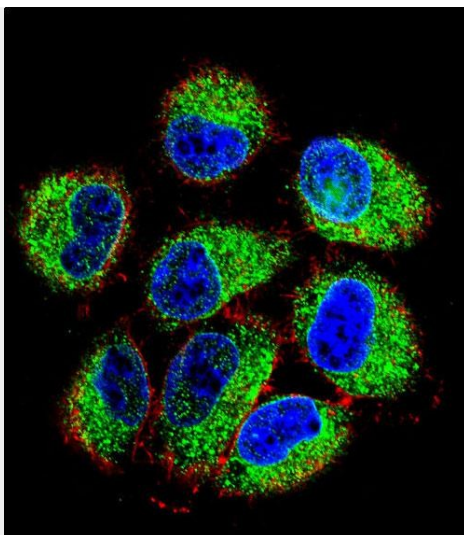
Provided below are standard protocols that you may find useful for product applications.

- [Western Blot](#)
- [Blocking Peptides](#)
- [Dot Blot](#)
- [Immunohistochemistry](#)
- [Immunofluorescence](#)
- [Immunoprecipitation](#)
- [Flow Cytometry](#)
- [Cell Culture](#)

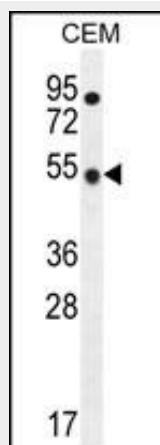
**TBC1D13 Antibody (Center) - Images**



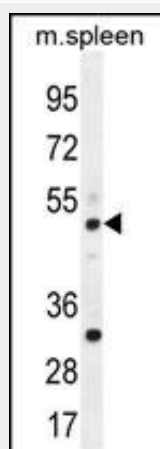
All lanes : Anti-TBC1D13 Antibody (Center) at 1:500 dilution Lane 1:PC-12 whole cell lysate Lysates/proteins at 20 µg per lane. Secondary Goat Anti-Rabbit IgG, (H+L), Peroxidase conjugated (ASP1615) at 1/15000 dilution. Observed band size : 47kDa Blocking/Dilution buffer: 5% NFDm/TBST.



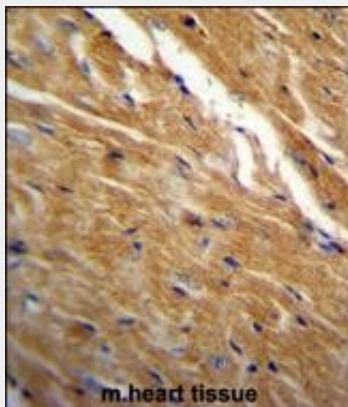
Confocal immunofluorescent analysis of TBC1D13 Antibody (Center)(Cat#AP11876c) with NCI-H460 cell followed by Alexa Fluor 488-conjugated goat anti-rabbit IgG (green). Actin filaments have been labeled with Alexa Fluor 555 phalloidin (red). DAPI was used to stain the cell nuclear (blue).



TBC1D13 Antibody (Center) (Cat. #AP11876c) western blot analysis in CEM cell line lysates (35ug/lane). This demonstrates the TBC1D13 antibody detected the TBC1D13 protein (arrow).



TBC1D13 Antibody (Center) (Cat. #AP11876c) western blot analysis in mouse spleen tissue lysates (35ug/lane). This demonstrates the TBC1D13 antibody detected the TBC1D13 protein (arrow).



TBC1D13 Antibody (Center) (Cat. #AP11876c) immunohistochemistry analysis in formalin fixed and paraffin embedded mouse heart tissue followed by peroxidase conjugation of the secondary antibody and DAB staining. This data demonstrates the use of TBC1D13 Antibody (Center) for immunohistochemistry. Clinical relevance has not been evaluated.

#### **TBC1D13 Antibody (Center) - Background**

TBC1D13 may act as a GTPase-activating protein for Rab family protein(s).

#### **TBC1D13 Antibody (Center) - References**

Ishibashi, K., et al. Genes Cells 14(1):41-52(2009)