

**LRRC38 Antibody (C-term)**  
**Affinity Purified Rabbit Polyclonal Antibody (Pab)**  
**Catalog # AP11899b****Specification**

---

**LRRC38 Antibody (C-term) - Product Information**

Application	WB, IHC-P, FC,E
Primary Accession	<a href="#">Q5VT99</a>
Other Accession	<a href="#">NP_001010847.1</a>
Reactivity	Human
Host	Rabbit
Clonality	Polyclonal
Isotype	Rabbit IgG
Calculated MW	32082
Antigen Region	188-216

**LRRC38 Antibody (C-term) - Additional Information****Gene ID** 126755**Other Names**

Leucine-rich repeat-containing protein 38, BK channel auxiliary gamma subunit LRRC38, LRRC38

**Target/Specificity**

This LRRC38 antibody is generated from rabbits immunized with a KLH conjugated synthetic peptide between 188-216 amino acids from the C-terminal region of human LRRC38.

**Dilution**

WB~~1:1000  
IHC-P~~1:10~50  
FC~~1:10~50

**Format**

Purified polyclonal antibody supplied in PBS with 0.09% (W/V) sodium azide. This antibody is purified through a protein A column, followed by peptide affinity purification.

**Storage**

Maintain refrigerated at 2-8°C for up to 2 weeks. For long term storage store at -20°C in small aliquots to prevent freeze-thaw cycles.

**Precautions**

LRRC38 Antibody (C-term) is for research use only and not for use in diagnostic or therapeutic procedures.

**LRRC38 Antibody (C-term) - Protein Information****Name** LRRC38

**Function** Auxiliary protein of the large-conductance, voltage and calcium-activated potassium channel (BK alpha). Modulates gating properties by producing a marked shift in the BK channel's voltage dependence of activation in the hyperpolarizing direction, and in the absence of calcium.

**Cellular Location**

Cell membrane; Single-pass type I membrane protein

**Tissue Location**

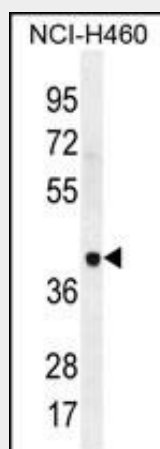
Mainly expressed in adrenal gland, thymus and skeletal muscle.

**LRRC38 Antibody (C-term) - Protocols**

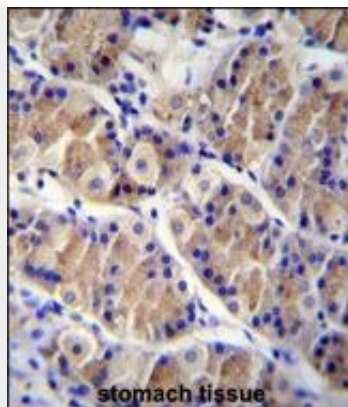
Provided below are standard protocols that you may find useful for product applications.

- [Western Blot](#)
- [Blocking Peptides](#)
- [Dot Blot](#)
- [Immunohistochemistry](#)
- [Immunofluorescence](#)
- [Immunoprecipitation](#)
- [Flow Cytometry](#)
- [Cell Culture](#)

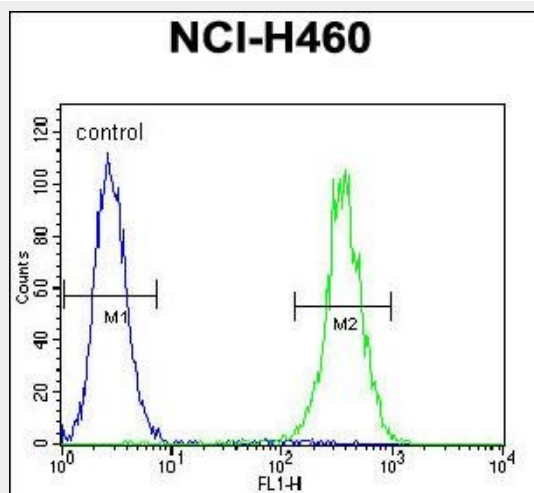
**LRRC38 Antibody (C-term) - Images**



LRRC38 Antibody (C-term) (Cat. #AP11899b) western blot analysis in NCI-H460 cell line lysates (35ug/lane). This demonstrates the LRRC38 antibody detected the LRRC38 protein (arrow).



LRRC38 Antibody (C-term) (Cat. #AP11899b) immunohistochemistry analysis in formalin fixed and paraffin embedded human stomach tissue followed by peroxidase conjugation of the secondary antibody and DAB staining. This data demonstrates the use of LRRC38 Antibody (C-term) for immunohistochemistry. Clinical relevance has not been evaluated.



LRRC38 Antibody (C-term) (Cat. #AP11899b) flow cytometric analysis of NCI-H460 cells (right histogram) compared to a negative control cell (left histogram). FITC-conjugated goat-anti-rabbit secondary antibodies were used for the analysis.

#### **LRRC38 Antibody (C-term) - Background**

The function of this protein remains unknown.

#### **LRRC38 Antibody (C-term) - References**

Strausberg, R.L., et al. Proc. Natl. Acad. Sci. U.S.A. 99(26):16899-16903(2002)