

SHISA6 Antibody (N-term)
Affinity Purified Rabbit Polyclonal Antibody (Pab)
Catalog # AP11913a**Specification**

SHISA6 Antibody (N-term) - Product Information

Application	WB, IHC-P,E
Primary Accession	Q6ZSJ9
Other Accession	Q3UH99 , NP_997269.2
Reactivity	Human
Predicted	Mouse
Host	Rabbit
Clonality	Polyclonal
Isotype	Rabbit IgG
Calculated MW	55764
Antigen Region	81-109

SHISA6 Antibody (N-term) - Additional Information**Gene ID** 388336**Other Names**

Protein shisa-6 homolog, SHISA6

Target/Specificity

This SHISA6 antibody is generated from rabbits immunized with a KLH conjugated synthetic peptide between 81-109 amino acids from the N-terminal region of human SHISA6.

Dilution

WB~~1:1000

IHC-P~~1:10~50

Format

Purified polyclonal antibody supplied in PBS with 0.09% (W/V) sodium azide. This antibody is purified through a protein A column, followed by peptide affinity purification.

Storage

Maintain refrigerated at 2-8°C for up to 2 weeks. For long term storage store at -20°C in small aliquots to prevent freeze-thaw cycles.

Precautions

SHISA6 Antibody (N-term) is for research use only and not for use in diagnostic or therapeutic procedures.

SHISA6 Antibody (N-term) - Protein Information**Name** SHISA6 ([HGNC:34491](#))

Function Involved in maintenance of high-frequency synaptic transmission at hippocampal CA3-CA1 synapses. Regulates AMPA-type glutamate receptor (AMPA) immobilization at postsynaptic density keeping the channels in an activated state in the presence of glutamate and preventing synaptic depression. May play a role in self-renewal and differentiation of spermatogonial stem cells by inhibiting canonical Wnt signaling pathway.

Cellular Location

Membrane; Single-pass type I membrane protein {ECO:0000250|UniProtKB:Q3UH99}.
Postsynaptic density {ECO:0000250|UniProtKB:Q3UH99}

Tissue Location

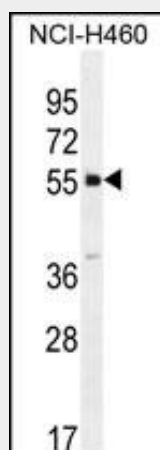
Expressed in the developing ventral mesencephalon.

SHISA6 Antibody (N-term) - Protocols

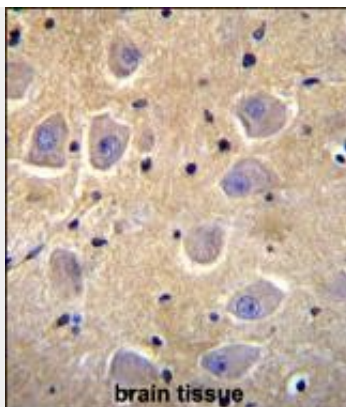
Provided below are standard protocols that you may find useful for product applications.

- [Western Blot](#)
- [Blocking Peptides](#)
- [Dot Blot](#)
- [Immunohistochemistry](#)
- [Immunofluorescence](#)
- [Immunoprecipitation](#)
- [Flow Cytometry](#)
- [Cell Culture](#)

SHISA6 Antibody (N-term) - Images



SHISA6 Antibody (N-term) (Cat. #AP11913a) western blot analysis in NCI-H460 cell line lysates (35ug/lane). This demonstrates the SHISA6 antibody detected the SHISA6 protein (arrow).



SHISA6 Antibody (N-term) (Cat. #AP11913a) immunohistochemistry analysis in formalin fixed and paraffin embedded human brain tissue followed by peroxidase conjugation of the secondary antibody and DAB staining. This data demonstrates the use of SHISA6 Antibody (N-term) for immunohistochemistry. Clinical relevance has not been evaluated.

SHISA6 Antibody (N-term) - Background

The function of this protein remains unknown.

SHISA6 Antibody (N-term) - References

Rose, J.E., et al. Mol. Med. 16 (7-8), 247-253 (2010) :