

**VSIG1 Antibody (C-term)**  
**Affinity Purified Rabbit Polyclonal Antibody (Pab)**  
**Catalog # AP11924b****Specification**

---

**VSIG1 Antibody (C-term) - Product Information**

Application	WB, IHC-P,E
Primary Accession	<a href="#">Q86XK7</a>
Other Accession	<a href="#">NP_872413.1</a>
Reactivity	Human
Host	Rabbit
Clonality	Polyclonal
Isotype	Rabbit IgG
Calculated MW	41811
Antigen Region	293-322

**VSIG1 Antibody (C-term) - Additional Information****Gene ID** 340547**Other Names**

V-set and immunoglobulin domain-containing protein 1, Cell surface A33 antigen, Glycoprotein A34, VSIG1, GPA34

**Target/Specificity**

This VSIG1 antibody is generated from rabbits immunized with a KLH conjugated synthetic peptide between 293-322 amino acids from the C-terminal region of human VSIG1.

**Dilution**

WB~~1:1000

IHC-P~~1:10~50

**Format**

Purified polyclonal antibody supplied in PBS with 0.09% (W/V) sodium azide. This antibody is purified through a protein A column, followed by peptide affinity purification.

**Storage**

Maintain refrigerated at 2-8°C for up to 2 weeks. For long term storage store at -20°C in small aliquots to prevent freeze-thaw cycles.

**Precautions**

VSIG1 Antibody (C-term) is for research use only and not for use in diagnostic or therapeutic procedures.

**VSIG1 Antibody (C-term) - Protein Information****Name** VSIG1

**Synonyms** GPA34**Cellular Location**

Membrane; Single-pass type I membrane protein

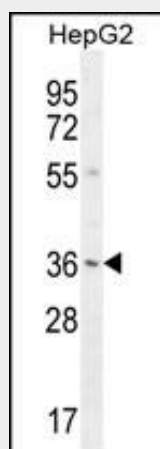
**Tissue Location**

Detected only in stomach mucosa and testis, and to a much lesser level in pancreas (at protein level). Detected in gastric cancers (31%), esophageal carcinomas (50%) and ovarian cancers (23%)

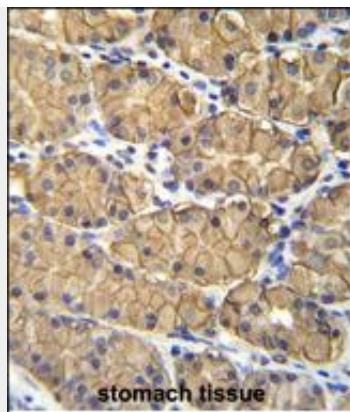
**VSIG1 Antibody (C-term) - Protocols**

Provided below are standard protocols that you may find useful for product applications.

- [Western Blot](#)
- [Blocking Peptides](#)
- [Dot Blot](#)
- [Immunohistochemistry](#)
- [Immunofluorescence](#)
- [Immunoprecipitation](#)
- [Flow Cytometry](#)
- [Cell Culture](#)

**VSIG1 Antibody (C-term) - Images**

VSIG1 Antibody (C-term) (Cat. #AP11924b) western blot analysis in HepG2 cell line lysates (35ug/lane). This demonstrates the VSIG1 antibody detected the VSIG1 protein (arrow).



VSIG1 Antibody (C-term) (Cat. #AP11924b) immunohistochemistry analysis in formalin fixed and paraffin embedded human stomach tissue followed by peroxidase conjugation of the secondary antibody and DAB staining. This data demonstrates the use of VSIG1 Antibody (C-term) for immunohistochemistry. Clinical relevance has not been evaluated.

#### **VSIG1 Antibody (C-term) - Background**

This gene encodes a member of the junctional adhesion molecule (JAM) family. The encoded protein contains multiple glycosylation sites at the N-terminal region, and multiple phosphorylation sites and glutamic acid/proline (EP) repeats at the C-terminal region. The gene is expressed in normal stomach and testis, as well as in gastric, esophageal and ovarian cancers. Alternatively spliced transcript variants encoding different isoforms have been found for this gene.

#### **VSIG1 Antibody (C-term) - References**

Scanlan, M.J., et al. Cancer Immun. 6, 2 (2006) :