

**TUBB6 Antibody (Center)**  
**Affinity Purified Rabbit Polyclonal Antibody (Pab)**  
**Catalog # AP11928c****Specification**

---

**TUBB6 Antibody (Center) - Product Information**

Application	WB,E
Primary Accession	<a href="#">Q9BUF5</a>
Other Accession	<a href="#">Q9D6F9</a> , <a href="#">Q4R4X8</a> , <a href="#">P04350</a> , <a href="#">Q3ZBU7</a> , <a href="#">NP_115914.1</a>
Reactivity	Human
Predicted	Bovine, Monkey, Mouse
Host	Rabbit
Clonality	Polyclonal
Isotype	Rabbit IgG
Calculated MW	49857
Antigen Region	139-166

**TUBB6 Antibody (Center) - Additional Information****Gene ID** 84617**Other Names**

Tubulin beta-6 chain, Tubulin beta class V, TUBB6

**Target/Specificity**

This TUBB6 antibody is generated from rabbits immunized with a KLH conjugated synthetic peptide between 139-166 amino acids from the Central region of human TUBB6.

**Dilution**

WB~~1:2000

**Format**

Purified polyclonal antibody supplied in PBS with 0.09% (W/V) sodium azide. This antibody is purified through a protein A column, followed by peptide affinity purification.

**Storage**

Maintain refrigerated at 2-8°C for up to 2 weeks. For long term storage store at -20°C in small aliquots to prevent freeze-thaw cycles.

**Precautions**

TUBB6 Antibody (Center) is for research use only and not for use in diagnostic or therapeutic procedures.

**TUBB6 Antibody (Center) - Protein Information****Name** TUBB6

**Function** Tubulin is the major constituent of microtubules, a cylinder consisting of laterally associated linear protofilaments composed of alpha- and beta-tubulin heterodimers. Microtubules grow by the addition of GTP-tubulin dimers to the microtubule end, where a stabilizing cap forms. Below the cap, tubulin dimers are in GDP-bound state, owing to GTPase activity of alpha-tubulin.

#### Cellular Location

Cytoplasm, cytoskeleton.

#### Tissue Location

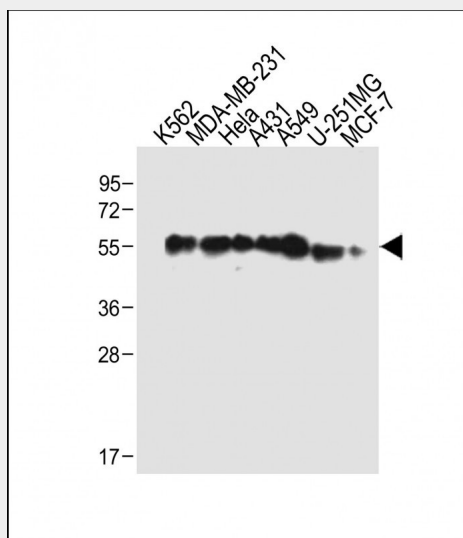
Ubiquitous. Maximal expression in breast and lung, where it represents around 10% of all beta-tubulins. Largely decreased expression in most cancerous tissues.

### TUBB6 Antibody (Center) - Protocols

Provided below are standard protocols that you may find useful for product applications.

- [Western Blot](#)
- [Blocking Peptides](#)
- [Dot Blot](#)
- [Immunohistochemistry](#)
- [Immunofluorescence](#)
- [Immunoprecipitation](#)
- [Flow Cytometry](#)
- [Cell Culture](#)

### TUBB6 Antibody (Center) - Images



All lanes : Anti-TUBB6 Antibody (Center) at 1:2000 dilution Lane 1: K562 whole cell lysate Lane 2: MDA-MB-231 whole cell lysate Lane 3: HeLa whole cell lysate Lane 4: A431 whole cell lysate Lane 5: A549 whole cell lysate Lane 6: U-251MG whole cell lysate Lane 7: MCF-7 whole cell lysate Lysates/proteins at 20 µg per lane. Secondary Goat Anti-Rabbit IgG, (H+L), Peroxidase conjugated at 1/10000 dilution. Predicted band size : 50 kDa Blocking/Dilution buffer: 5% NFDM/TBST.

### TUBB6 Antibody (Center) - Background

Tubulin is the major constituent of microtubules. It binds two moles of GTP, one at an exchangeable site on the beta chain and one at a non-exchangeable site on the alpha-chain (By

similarity).

#### **TUBB6 Antibody (Center) - References**

Leandro-Garcia, L.J., et al. Cytoskeleton (Hoboken) 67(4):214-223(2010)

Matsuoka, S., et al. Science 316(5828):1160-1166(2007)