

**MGP Antibody (Center)**  
**Affinity Purified Rabbit Polyclonal Antibody (Pab)**  
**Catalog # AP11953c**

**Specification**

---

**MGP Antibody (Center) - Product Information**

Application	WB, IHC-P, FC,E
Primary Accession	<a href="#">P08493</a>
Other Accession	<a href="#">NP_000891.2</a>
Reactivity	Human
Host	Rabbit
Clonality	Polyclonal
Isotype	Rabbit IgG
Antigen Region	37-66

**MGP Antibody (Center) - Additional Information**

**Gene ID** 4256

**Other Names**

Matrix Gla protein, MGP, Cell growth-inhibiting gene 36 protein, MGP, MGLAP

**Target/Specificity**

This MGP antibody is generated from rabbits immunized with a KLH conjugated synthetic peptide between 37-66 amino acids from the Central region of human MGP.

**Dilution**

WB~~1:1000  
IHC-P~~1:50~100  
FC~~1:10~50

**Format**

Purified polyclonal antibody supplied in PBS with 0.09% (W/V) sodium azide. This antibody is purified through a protein A column, followed by peptide affinity purification.

**Storage**

Maintain refrigerated at 2-8°C for up to 2 weeks. For long term storage store at -20°C in small aliquots to prevent freeze-thaw cycles.

**Precautions**

MGP Antibody (Center) is for research use only and not for use in diagnostic or therapeutic procedures.

**MGP Antibody (Center) - Protein Information**

**Name** MGP

**Synonyms** MGLAP

**Function** Associates with the organic matrix of bone and cartilage. Thought to act as an inhibitor of bone formation.

**Cellular Location**

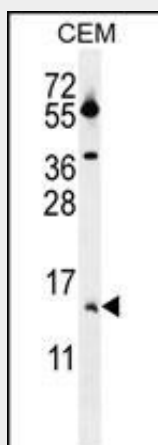
Secreted.

**MGP Antibody (Center) - Protocols**

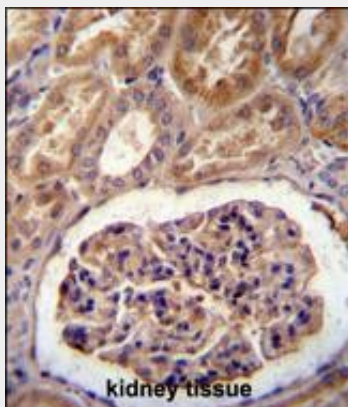
Provided below are standard protocols that you may find useful for product applications.

- [Western Blot](#)
- [Blocking Peptides](#)
- [Dot Blot](#)
- [Immunohistochemistry](#)
- [Immunofluorescence](#)
- [Immunoprecipitation](#)
- [Flow Cytometry](#)
- [Cell Culture](#)

**MGP Antibody (Center) - Images**

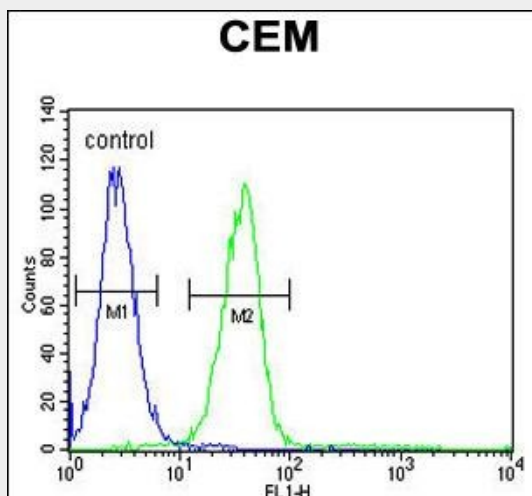


MGP Antibody (Center) (Cat. #AP11953c) western blot analysis in CEM cell line lysates (35ug/lane). This demonstrates the MGP antibody detected the MGP protein (arrow).



MGP Antibody (Center) (Cat. #AP11953c) immunohistochemistry analysis in formalin fixed and paraffin embedded human kidney tissue followed by peroxidase conjugation of the secondary

antibody and DAB staining. This data demonstrates the use of MGP Antibody (Center) for immunohistochemistry. Clinical relevance has not been evaluated.



MGP Antibody (Center) (Cat. #AP11953c) flow cytometric analysis of CEM cells (right histogram) compared to a negative control cell (left histogram). FITC-conjugated goat-anti-rabbit secondary antibodies were used for the analysis.

#### **MGP Antibody (Center) - Background**

The protein encoded by this gene is secreted and likely acts as an inhibitor of bone formation. The encoded protein is found in the organic matrix of bone and cartilage. Defects in this gene are a cause of Keutel syndrome (KS). Two transcript variants encoding different isoforms have been found for this gene.

#### **MGP Antibody (Center) - References**

Romero, R., et al. Am. J. Obstet. Gynecol. (2010) In press :  
Bailey, S.D., et al. Diabetes Care (2010) In press :  
Parker, B.D., et al. Ann. Intern. Med. 152(10):640-648(2010)  
Romero, R., et al. Am. J. Obstet. Gynecol. 202 (5), 431 (2010) :  
Schurgers, L.J., et al. Clin J Am Soc Nephrol 5(4):568-575(2010)

#### **MGP Antibody (Center) - Citations**

- [Microenvironmental reprogramming by three-dimensional culture enables dermal papilla cells to induce de novo human hair-follicle growth.](#)