

POSTN Antibody (C-term)
Affinity Purified Rabbit Polyclonal Antibody (Pab)
Catalog # AP11962b

Specification

POSTN Antibody (C-term) - Product Information

Application	IF, WB, IHC-P, FC,E
Primary Accession	Q15063
Other Accession	NP_006466
Reactivity	Human, Rat
Host	Rabbit
Clonality	Polyclonal
Isotype	Rabbit IgG
Antigen Region	687-716

POSTN Antibody (C-term) - Additional Information

Gene ID 10631

Other Names

Periostin, PN, Osteoblast-specific factor 2, OSF-2, POSTN, OSF2

Target/Specificity

This POSTN antibody is generated from rabbits immunized with a KLH conjugated synthetic peptide between 687-716 amino acids from the C-terminal region of human POSTN.

Dilution

IF~~1:10~50
WB~~1:1000
IHC-P~~1:100
FC~~1:25

Format

Purified polyclonal antibody supplied in PBS with 0.09% (W/V) sodium azide. This antibody is purified through a protein A column, followed by peptide affinity purification.

Storage

Maintain refrigerated at 2-8°C for up to 2 weeks. For long term storage store at -20°C in small aliquots to prevent freeze-thaw cycles.

Precautions

POSTN Antibody (C-term) is for research use only and not for use in diagnostic or therapeutic procedures.

POSTN Antibody (C-term) - Protein Information

Name POSTN

Synonyms OSF2

Function Induces cell attachment and spreading and plays a role in cell adhesion (PubMed:[12235007](#)). Enhances incorporation of BMP1 in the fibronectin matrix of connective tissues, and subsequent proteolytic activation of lysyl oxidase LOX (By similarity).

Cellular Location

Golgi apparatus {ECO:0000250|UniProtKB:Q62009}. Secreted Secreted, extracellular space, extracellular matrix Note=Colocalizes with BMP1 in the Golgi {ECO:0000250|UniProtKB:Q62009}

Tissue Location

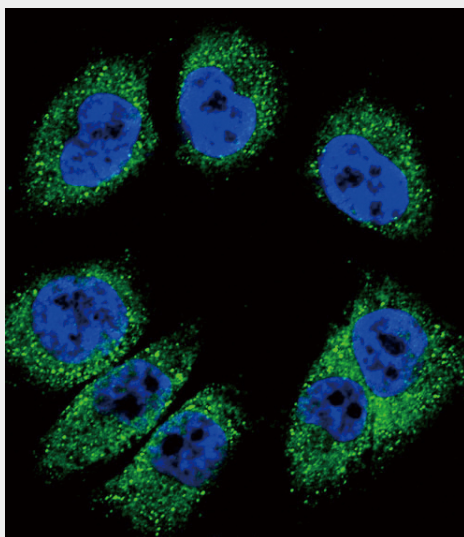
Widely expressed with highest levels in aorta, stomach, lower gastrointestinal tract, placenta, uterus, thyroid tissue and breast. Expressed in the kidney (PubMed:21763681). Expressed in the lung (PubMed:22079858). Up-regulated in epithelial ovarian tumors. Not expressed in normal ovaries. Also highly expressed at the tumor periphery of lung carcinoma tissue but not within the tumor Overexpressed in breast cancers.

POSTN Antibody (C-term) - Protocols

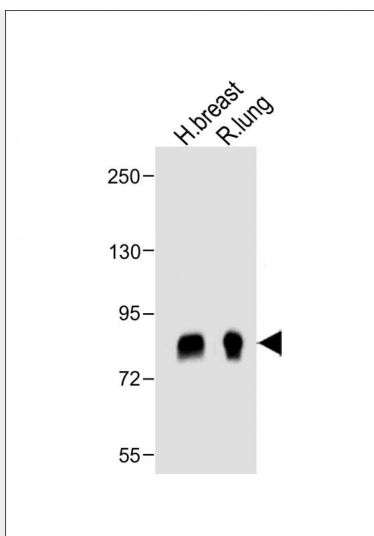
Provided below are standard protocols that you may find useful for product applications.

- [Western Blot](#)
- [Blocking Peptides](#)
- [Dot Blot](#)
- [Immunohistochemistry](#)
- [Immunofluorescence](#)
- [Immunoprecipitation](#)
- [Flow Cytometry](#)
- [Cell Culture](#)

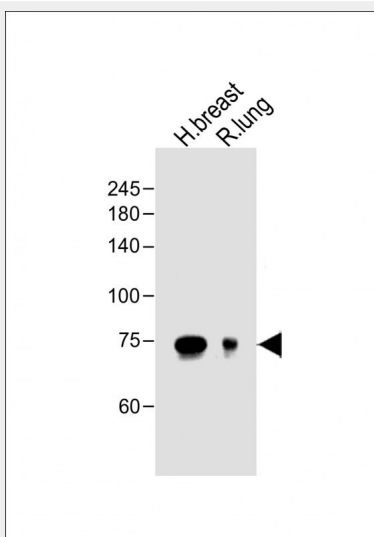
POSTN Antibody (C-term) - Images



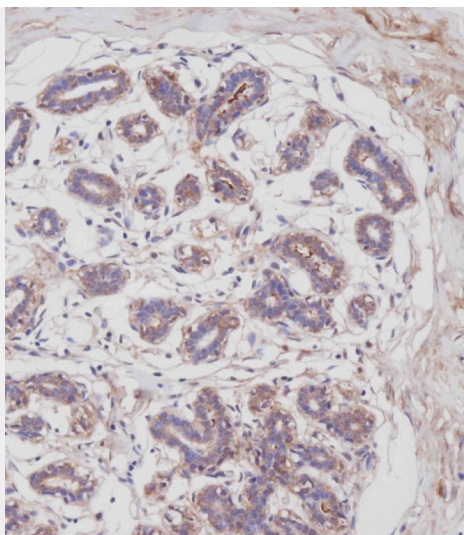
Confocal immunofluorescent analysis of POSTN Antibody (C-term)(Cat#AP11962b) with A375 cell followed by Alexa Fluor 488-conjugated goat anti-rabbit IgG (green). DAPI was used to stain the cell nuclear (blue).



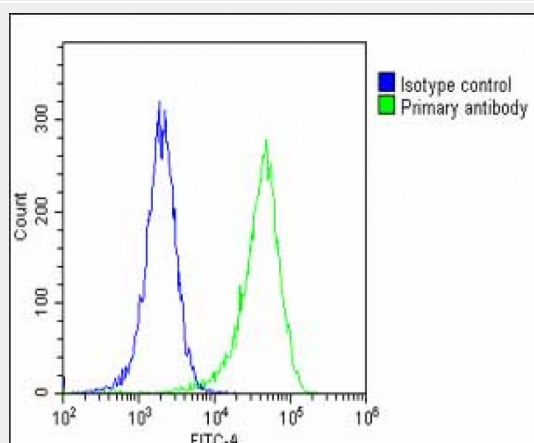
All lanes : Anti- POSTN Antibody (C-term) at 1:1000 dilution Lane 1: human breast lysate Lane 2: rat lung lysate Lysates/proteins at 20 μ g per lane. Secondary Goat Anti-Rabbit IgG, (H+L), Peroxidase conjugated at 1/10000 dilution. Predicted band size : 93 kDa Blocking/Dilution buffer: 5% NFDM/TBST.



All lanes : Anti- POSTN Antibody (C-term) at 1:1000 dilution Lane 1: human breast lysate Lane 2: rat lung lysate Lysates/proteins at 20 μ g per lane. Secondary Goat Anti-Rabbit IgG, (H+L), Peroxidase conjugated at 1/10000 dilution. Predicted band size : 93 kDa Blocking/Dilution buffer: 5% NFDM/TBST.



Immunohistochemical analysis of AP11962B on paraffin-embedded Human breast tissue. Tissue was fixed with formaldehyde at room temperature. Heat induced epitope retrieval was performed by EDTA buffer (pH9. 0). Samples were incubated with primary antibody(1:100) for 1 hour at room temperature. Undiluted CRF Anti-Polyvalent HRP Polymer antibody was used as the secondary antibody.



Overlay histogram showing Hela cells stained with AP11962B(green line). The cells were fixed with 2% paraformaldehyde (10 min) and then permeabilized with 90% methanol for 10 min. The cells were then incubated in 2% bovine serum albumin to block non-specific protein-protein interactions followed by the antibody (AP11962B, 1:25 dilution) for 60 min at 37°C. The secondary antibody used was Goat-Anti-Rabbit IgG, DyLight® 488 Conjugated Highly Cross-Adsorbed(1583138) at 1/200 dilution for 40 min at 37°C. Isotype control antibody (blue line) was rabbit IgG1 (1µg/1x10⁶ cells) used under the same conditions. Acquisition of >10, 000 events was performed.

POSTN Antibody (C-term) - Background

POSTN binds to heparin. It induces cell attachment and spreading and plays a role in cell adhesion and may play a role in extracellular matrix mineralization.

POSTN Antibody (C-term) - References

- Zhu, M., et al. Gynecol. Oncol. 119(2):337-344(2010)
Bailey, S.D., et al. Diabetes Care 33(10):2250-2253(2010)
Takada, M., et al. Biochem. Biophys. Res. Commun. 399(2):221-226(2010)

Sidhu, S.S., et al. Proc. Natl. Acad. Sci. U.S.A. 107(32):14170-14175(2010)

Tischler, V., et al. BMC Cancer 10, 273 (2010) :

POSTN Antibody (C-term) - Citations

- [Periostin \(POSTN\) regulates tumor resistance to antiangiogenic therapy in glioma models.](#)