

**PSMAL Antibody (C-term)**  
**Affinity Purified Rabbit Polyclonal Antibody (Pab)**  
**Catalog # AP11974b**

**Specification**

---

**PSMAL Antibody (C-term) - Product Information**

Application	WB, FC,E
Primary Accession	<a href="#">O9HBA9</a>
Other Accession	<a href="#">NP_710163</a>
Reactivity	Human
Host	Rabbit
Clonality	Polyclonal
Isotype	Rabbit IgG
Calculated MW	50045
Antigen Region	395-423

**PSMAL Antibody (C-term) - Additional Information**

**Other Names**

Putative N-acetylated-alpha-linked acidic dipeptidase, NAALADase, 34--, Cell growth-inhibiting gene 26 protein, Prostate-specific membrane antigen-like protein, Putative folate hydrolase 1B, FOLH1B, PSMAL

**Target/Specificity**

This PSMAL antibody is generated from rabbits immunized with a KLH conjugated synthetic peptide between 395-423 amino acids from the C-terminal region of human PSMAL.

**Dilution**

WB~~1:1000

FC~~1:10~50

**Format**

Purified polyclonal antibody supplied in PBS with 0.09% (W/V) sodium azide. This antibody is purified through a protein A column, followed by peptide affinity purification.

**Storage**

Maintain refrigerated at 2-8°C for up to 2 weeks. For long term storage store at -20°C in small aliquots to prevent freeze-thaw cycles.

**Precautions**

PSMAL Antibody (C-term) is for research use only and not for use in diagnostic or therapeutic procedures.

**PSMAL Antibody (C-term) - Protein Information**

**Name** FOLH1B

**Synonyms** PSMAL

**Function** Has both folate hydrolase and N-acetylated-alpha-linked- acidic dipeptidase (NAALADase) activity.

**Cellular Location**

Cytoplasm.

**Tissue Location**

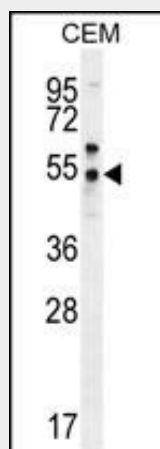
Kidney and liver. Not expressed in the prostate.

**PSMAL Antibody (C-term) - Protocols**

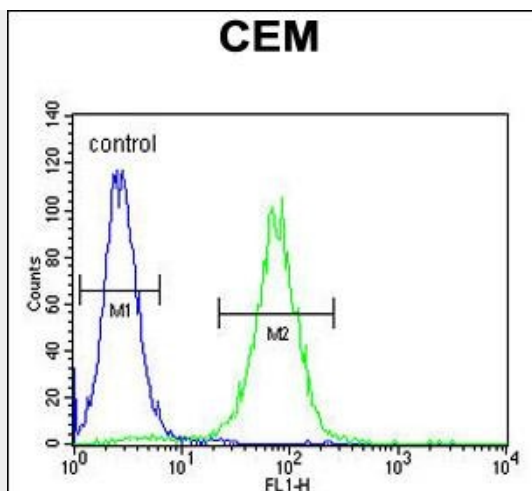
Provided below are standard protocols that you may find useful for product applications.

- [Western Blot](#)
- [Blocking Peptides](#)
- [Dot Blot](#)
- [Immunohistochemistry](#)
- [Immunofluorescence](#)
- [Immunoprecipitation](#)
- [Flow Cytometry](#)
- [Cell Culture](#)

**PSMAL Antibody (C-term) - Images**



PSMAL Antibody (C-term) (Cat. #AP11974b) western blot analysis in CEM cell line lysates (35ug/lane). This demonstrates the PSMAL antibody detected the PSMAL protein (arrow).



PSMAL Antibody (C-term) (Cat. #AP11974b) flow cytometric analysis of CEM cells (right histogram) compared to a negative control cell (left histogram). FITC-conjugated goat-anti-rabbit secondary antibodies were used for the analysis.

#### **PSMAL Antibody (C-term) - Background**

FOLH1B has both folate hydrolase and N-acetylated-alpha-linked-acidic dipeptidase (NAALADase) activity (By similarity) and exhibits a dipeptidyl-peptidase IV type activity (By similarity).

#### **PSMAL Antibody (C-term) - References**

- Lambert, L.A., et al. J. Mol. Evol. 64(1):113-128(2007)
- O'Keefe, D.S., et al. Prostate 58(2):200-210(2004)
- O'Keefe, D.S., et al. Biochim. Biophys. Acta 1443 (1-2), 113-127 (1998) :
- Maraj, B.H., et al. Cytogenet. Cell Genet. 81(1):3-9(1998)
- Israeli, R.S., et al. Cancer Res. 53(2):227-230(1993)