

PPP1R3G Antibody (C-term)
Affinity Purified Rabbit Polyclonal Antibody (Pab)
Catalog # AP11993b

Specification

PPP1R3G Antibody (C-term) - Product Information

Application	WB, FC,E
Primary Accession	B7ZBB8
Other Accession	NP_001138587.1
Reactivity	Human
Host	Rabbit
Clonality	Polyclonal
Isotype	Rabbit IgG
Antigen Region	269-298

PPP1R3G Antibody (C-term) - Additional Information

Gene ID 648791

Other Names

Protein phosphatase 1 regulatory subunit 3G, PPP1R3G

Target/Specificity

This PPP1R3G antibody is generated from rabbits immunized with a KLH conjugated synthetic peptide between 269-298 amino acids from the C-terminal region of human PPP1R3G.

Dilution

WB~~1:1000

FC~~1:10~50

Format

Purified polyclonal antibody supplied in PBS with 0.09% (W/V) sodium azide. This antibody is purified through a protein A column, followed by peptide affinity purification.

Storage

Maintain refrigerated at 2-8°C for up to 2 weeks. For long term storage store at -20°C in small aliquots to prevent freeze-thaw cycles.

Precautions

PPP1R3G Antibody (C-term) is for research use only and not for use in diagnostic or therapeutic procedures.

PPP1R3G Antibody (C-term) - Protein Information

Name PPP1R3G

Function Glycogen-targeting subunit for protein phosphatase 1 (PP1). Involved in the regulation of hepatic glycogenesis in a manner coupled to the fasting-feeding cycle and distinct from other

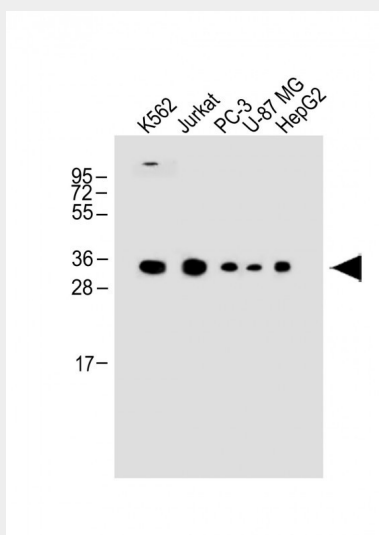
glycogen-targeting subunits (By similarity).

PPP1R3G Antibody (C-term) - Protocols

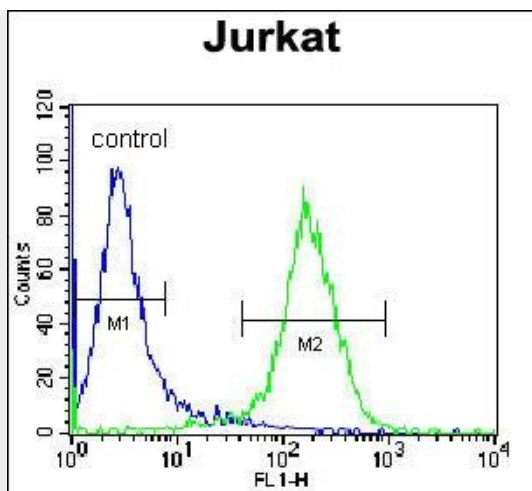
Provided below are standard protocols that you may find useful for product applications.

- [Western Blot](#)
- [Blocking Peptides](#)
- [Dot Blot](#)
- [Immunohistochemistry](#)
- [Immunofluorescence](#)
- [Immunoprecipitation](#)
- [Flow Cytometry](#)
- [Cell Culture](#)

PPP1R3G Antibody (C-term) - Images



All lanes : Anti-PPP1R3G Antibody (C-term) at 1:1000 dilution Lane 1: K562 whole cell lysate Lane 2: Jurkat whole cell lysate Lane 3: PC-3 whole cell lysate Lane 4: U-87 MG whole cell lysate Lane 5: HepG2 whole cell lysate Lysates/proteins at 20 µg per lane. Secondary Goat Anti-Rabbit IgG, (H+L), Peroxidase conjugated at 1/10000 dilution. Predicted band size : 38 kDa Blocking/Dilution buffer: 5% NFDM/TBST.



PPP1R3G Antibody (C-term) (Cat. #AP11993b) flow cytometric analysis of Jurkat cells (right histogram) compared to a negative control cell (left histogram). FITC-conjugated donkey-anti-rabbit secondary antibodies were used for the analysis.

PPP1R3G Antibody (C-term) - Background

The function of PPP1R3G remains unknown.

PPP1R3G Antibody (C-term) - References

Ceulemans, H., et al. Bioessays 24(4):371-381(2002)