

**PCDH1 Antibody (N-term)**  
**Affinity Purified Rabbit Polyclonal Antibody (Pab)**  
**Catalog # AP12019a**

**Specification**

---

**PCDH1 Antibody (N-term) - Product Information**

Application	IF, WB, IHC-P,E
Primary Accession	<a href="#">Q08174</a>
Other Accession	<a href="#">NP_115796.2</a>
Reactivity	Human
Host	Rabbit
Clonality	Polyclonal
Isotype	Rabbit IgG
Calculated MW	114743
Antigen Region	179-206

**PCDH1 Antibody (N-term) - Additional Information**

**Gene ID** 5097

**Other Names**

Protocadherin-1, Cadherin-like protein 1, Protocadherin-42, PC42, PCDH1

**Target/Specificity**

This PCDH1 antibody is generated from rabbits immunized with a KLH conjugated synthetic peptide between 179-206 amino acids from the N-terminal region of human PCDH1.

**Dilution**

IF~~1:10~50  
WB~~1:1000  
IHC-P~~1:10~50

**Format**

Purified polyclonal antibody supplied in PBS with 0.09% (W/V) sodium azide. This antibody is purified through a protein A column, followed by peptide affinity purification.

**Storage**

Maintain refrigerated at 2-8°C for up to 2 weeks. For long term storage store at -20°C in small aliquots to prevent freeze-thaw cycles.

**Precautions**

PCDH1 Antibody (N-term) is for research use only and not for use in diagnostic or therapeutic procedures.

**PCDH1 Antibody (N-term) - Protein Information**

**Name** PCDH1

**Function** May be involved in cell-cell interaction processes and in cell adhesion.

**Cellular Location**

Cell junction. Cell membrane; Single-pass type I membrane protein. Note=Found at cell- cell boundaries and probably at cell-matrix boundaries

**Tissue Location**

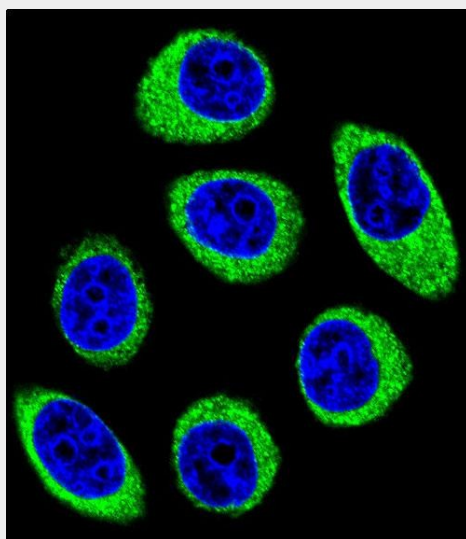
Highly expressed in the brain and neuro-glial cells

**PCDH1 Antibody (N-term) - Protocols**

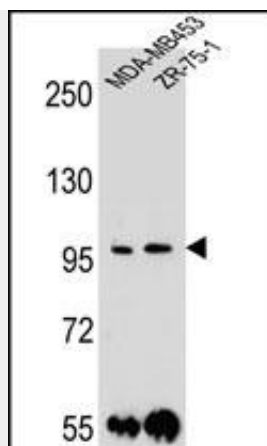
Provided below are standard protocols that you may find useful for product applications.

- [Western Blot](#)
- [Blocking Peptides](#)
- [Dot Blot](#)
- [Immunohistochemistry](#)
- [Immunofluorescence](#)
- [Immunoprecipitation](#)
- [Flow Cytometry](#)
- [Cell Culture](#)

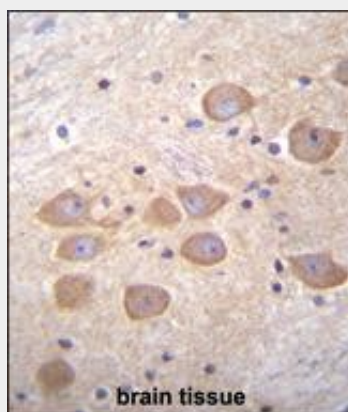
**PCDH1 Antibody (N-term) - Images**



Confocal immunofluorescent analysis of PCDH1 Antibody (N-term)(Cat#AP12019a) with U-251MG cell followed by Alexa Fluor 488-conjugated goat anti-rabbit IgG (green). DAPI was used to stain the cell nuclear (blue).



PCDH1 Antibody (N-term) (Cat. #AP12019a) western blot analysis in MDA-MB453,ZR-75-1 cell line lysates (35ug/lane).This demonstrates the PCDH1 antibody detected the PCDH1 protein (arrow).



PCDH1 Antibody (N-term) (Cat. #AP12019a)immunohistochemistry analysis in formalin fixed and paraffin embedded human brain tissue followed by peroxidase conjugation of the secondary antibody and DAB staining.This data demonstrates the use of PCDH1 Antibody (N-term) for immunohistochemistry. Clinical relevance has not been evaluated.

### PCDH1 Antibody (N-term) - Background

This gene belongs to the protocadherin subfamily within the cadherin superfamily. The encoded protein is a membrane protein found at cell-cell boundaries. It is involved in neural cell adhesion, suggesting a possible role in neuronal development. The protein includes an extracellular region, containing 7 cadherin-like domains, a transmembrane region and a C-terminal cytoplasmic region. Cells expressing the protein showed cell aggregation activity. Alternative splicing occurs in this gene.

### PCDH1 Antibody (N-term) - References

- Koppelman, G.H., et al. Am. J. Respir. Crit. Care Med. 180(10):929-935(2009)
- Rush, J., et al. Nat. Biotechnol. 23(1):94-101(2005)
- Ballif, B.A., et al. Mol. Cell Proteomics 3(11):1093-1101(2004)
- Ballif, B.A., et al. Mol. Cell Proteomics 3(11):1093-1101(2004)
- Colland, F., et al. Genome Res. 14(7):1324-1332(2004)