

**CPB1 Antibody (N-term)**  
**Affinity Purified Rabbit Polyclonal Antibody (Pab)**  
**Catalog # AP12023a**

**Specification**

---

**CPB1 Antibody (N-term) - Product Information**

Application	IF, WB, IHC-P, FC,E
Primary Accession	<a href="#">P15086</a>
Other Accession	<a href="#">NP_001862.2</a>
Reactivity	Human
Host	Rabbit
Clonality	Polyclonal
Isotype	Rabbit IgG
Antigen Region	9-37

**CPB1 Antibody (N-term) - Additional Information**

**Gene ID** 1360

**Other Names**

Carboxypeptidase B, Pancreas-specific protein, PASP, CPB1, CPB, PCPB

**Target/Specificity**

This CPB1 antibody is generated from rabbits immunized with a KLH conjugated synthetic peptide between 9-37 amino acids from the N-terminal region of human CPB1.

**Dilution**

IF~~1:10~50  
WB~~1:1000  
IHC-P~~1:10~50  
FC~~1:10~50

**Format**

Purified polyclonal antibody supplied in PBS with 0.09% (W/V) sodium azide. This antibody is purified through a protein A column, followed by peptide affinity purification.

**Storage**

Maintain refrigerated at 2-8°C for up to 2 weeks. For long term storage store at -20°C in small aliquots to prevent freeze-thaw cycles.

**Precautions**

CPB1 Antibody (N-term) is for research use only and not for use in diagnostic or therapeutic procedures.

**CPB1 Antibody (N-term) - Protein Information**

**Name** CPB1

**Synonyms** CPB, PCPB

**Cellular Location**

Secreted {ECO:0000250|UniProtKB:P00732}. Zymogen granule lumen  
{ECO:0000250|UniProtKB:P55261}

**Tissue Location**

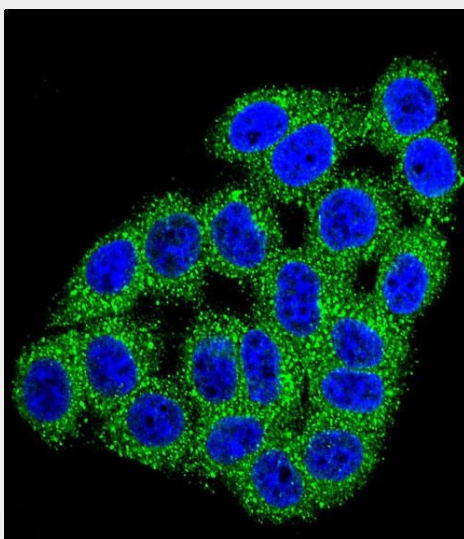
Pancreas..

**CPB1 Antibody (N-term) - Protocols**

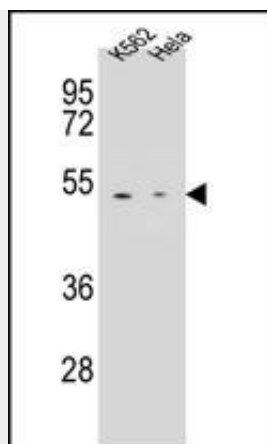
Provided below are standard protocols that you may find useful for product applications.

- [Western Blot](#)
- [Blocking Peptides](#)
- [Dot Blot](#)
- [Immunohistochemistry](#)
- [Immunofluorescence](#)
- [Immunoprecipitation](#)
- [Flow Cytometry](#)
- [Cell Culture](#)

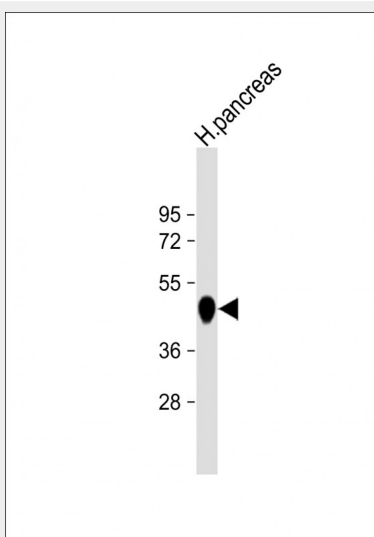
**CPB1 Antibody (N-term) - Images**



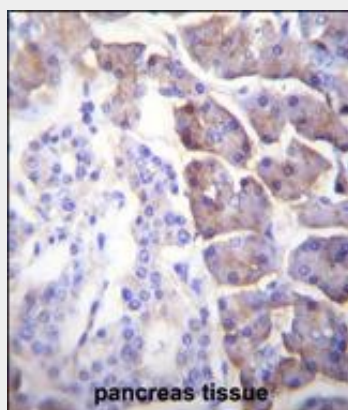
Confocal immunofluorescent analysis of CPB1 Antibody (N-term)(Cat#AP12023a) with HeLa cell followed by Alexa Fluor 488-conjugated goat anti-rabbit IgG (green). DAPI was used to stain the cell nuclear (blue).



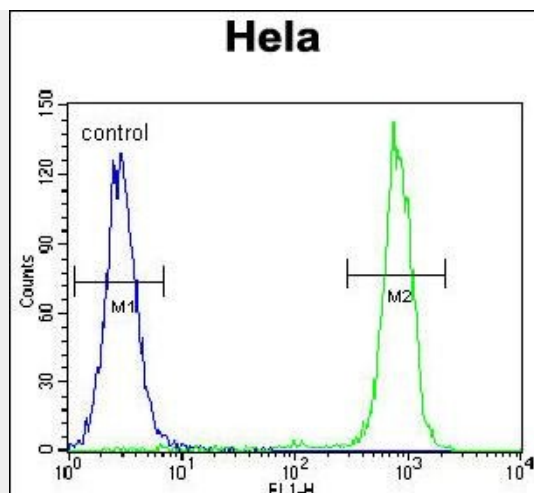
CPB1 Antibody (N-term) (Cat. #AP12023a) western blot analysis in K562,HeLa cell line lysates (35ug/lane).This demonstrates the CPB1 antibody detected the CPB1 protein (arrow).



Anti-CPB1 Antibody (N-term) at 1:1000 dilution + human pancreas lysate Lysates/proteins at 20 µg per lane. Secondary Goat Anti-Rabbit IgG, (H+L), Peroxidase conjugated at 1/10000 dilution. Predicted band size : 47 kDa Blocking/Dilution buffer: 5% NFDM/TBST.



CPB1 Antibody (N-term) (Cat. #AP12023a)immunohistochemistry analysis in formalin fixed and paraffin embedded human pancreas tissue followed by peroxidase conjugation of the secondary antibody and DAB staining.This data demonstrates the use of CPB1 Antibody (N-term) for immunohistochemistry. Clinical relevance has not been evaluated.



CPB1 Antibody (N-term) (Cat. #AP12023a) flow cytometric analysis of Hela cells (right histogram) compared to a negative control cell (left histogram). FITC-conjugated goat-anti-rabbit secondary antibodies were used for the analysis.

#### **CPB1 Antibody (N-term) - Background**

Three different procarboxypeptidases A and two different procarboxypeptidases B have been isolated. The B1 and B2 forms differ from each other mainly in isoelectric point. Carboxypeptidase B1 is a highly tissue-specific protein and is a useful serum marker for acute pancreatitis and dysfunction of pancreatic transplants. It is not elevated in pancreatic carcinoma.

#### **CPB1 Antibody (N-term) - References**

Rose, J. Phd, et al. Mol. Med. (2010) In press :  
Pantoja-Uceda, D., et al. Biochemistry 47(27):7066-7078(2008)  
Guimaraes, A.H., et al. Arterioscler. Thromb. Vasc. Biol. 27(10):2157-2162(2007)  
Barbosa Pereira, P.J., et al. J. Mol. Biol. 321(3):537-547(2002)  
Aloy, P., et al. Biol. Chem. 379(2):149-155(1998)