

**DVL3 Antibody (C-term)**  
**Affinity Purified Rabbit Polyclonal Antibody (Pab)**  
**Catalog # AP12030b**

**Specification**

---

**DVL3 Antibody (C-term) - Product Information**

Application	IF, WB, IHC-P,E
Primary Accession	<a href="#">O92997</a>
Other Accession	<a href="#">O61062</a> , <a href="#">NP_004414.3</a>
Reactivity	Human, Mouse
Predicted	Mouse
Host	Rabbit
Clonality	Polyclonal
Isotype	Rabbit IgG
Calculated MW	78055
Antigen Region	530-557

**DVL3 Antibody (C-term) - Additional Information**

**Gene ID** 1857

**Other Names**

Segment polarity protein dishevelled homolog DVL-3, Dishevelled-3, DSH homolog 3, DVL3, KIAA0208

**Target/Specificity**

This DVL3 antibody is generated from rabbits immunized with a KLH conjugated synthetic peptide between 530-557 amino acids from the C-terminal region of human DVL3.

**Dilution**

IF~~1:10~50  
WB~~1:2000  
IHC-P~~1:10~50

**Format**

Purified polyclonal antibody supplied in PBS with 0.09% (W/V) sodium azide. This antibody is purified through a protein A column, followed by peptide affinity purification.

**Storage**

Maintain refrigerated at 2-8°C for up to 2 weeks. For long term storage store at -20°C in small aliquots to prevent freeze-thaw cycles.

**Precautions**

DVL3 Antibody (C-term) is for research use only and not for use in diagnostic or therapeutic procedures.

**DVL3 Antibody (C-term) - Protein Information**

**Name** DVL3

**Synonyms** KIAA0208

**Function** Involved in the signal transduction pathway mediated by multiple Wnt genes.

**Cellular Location**

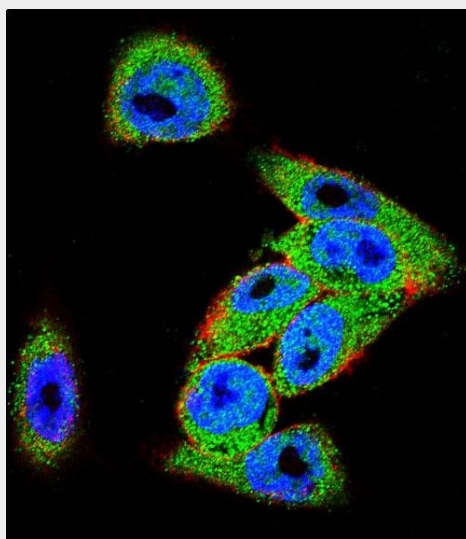
Cytoplasm {ECO:0000250|UniProtKB:O14641}.

**DVL3 Antibody (C-term) - Protocols**

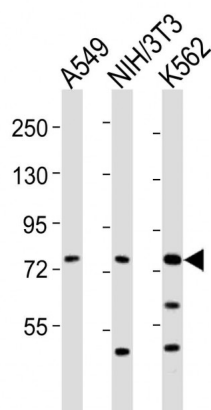
Provided below are standard protocols that you may find useful for product applications.

- [Western Blot](#)
- [Blocking Peptides](#)
- [Dot Blot](#)
- [Immunohistochemistry](#)
- [Immunofluorescence](#)
- [Immunoprecipitation](#)
- [Flow Cytometry](#)
- [Cell Culture](#)

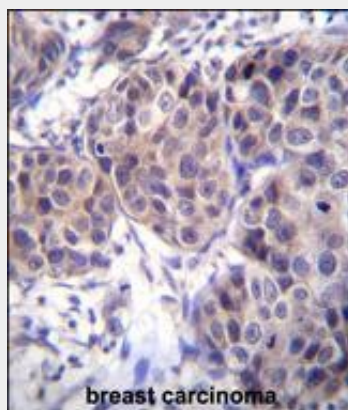
**DVL3 Antibody (C-term) - Images**



Confocal immunofluorescent analysis of DVL3 Antibody (C-term)(Cat#AP12030b) with A375 cell followed by Alexa Fluor 488-conjugated goat anti-rabbit IgG (green). Actin filaments have been labeled with Alexa Fluor 555 phalloidin (red).DAPI was used to stain the cell nuclear (blue).



All lanes : Anti-DVL3 Antibody (C-term) at 1:2000 dilution Lane 1: A549 whole cell lysates Lane 2: NIH/3T3 whole cell lysates Lane 3: K562 whole cell lysates Lysates/proteins at 20 µg per lane. Secondary Goat Anti-Rabbit IgG, (H+L), Peroxidase conjugated at 1/10000 dilution Predicted band size : 78 kDa Blocking/Dilution buffer: 5% NFDM/TBST.



DVL3 Antibody (C-term) (Cat. #AP12030b) immunohistochemistry analysis in formalin fixed and paraffin embedded human breast carcinoma followed by peroxidase conjugation of the secondary antibody and DAB staining. This data demonstrates the use of DVL3 Antibody (C-term) for immunohistochemistry. Clinical relevance has not been evaluated.

#### **DVL3 Antibody (C-term) - Background**

This gene is a member of a multi-gene family which shares strong similarity with the Drosophila dishevelled gene, dsh. The Drosophila dishevelled gene encodes a cytoplasmic phosphoprotein that regulates cell proliferation.

#### **DVL3 Antibody (C-term) - References**

Gnad, T., et al. Mol. Cancer 9, 31 (2010) :  
Boutelle, N., et al. Oncogene 28(28):2569-2580(2009)  
Fukukawa, C., et al. Oncogene 28(8):1110-1120(2009)  
Wei, Q., et al. Lung Cancer 62(2):181-192(2008)  
Lee, Y.N., et al. Cell. Signal. 20(2):443-452(2008)