

**DOK3 Antibody (C-term)**  
**Affinity Purified Rabbit Polyclonal Antibody (Pab)**  
**Catalog # AP12040b****Specification**

---

**DOK3 Antibody (C-term) - Product Information**

Application	WB, IHC-P,E
Primary Accession	<a href="#">Q7L591</a>
Other Accession	<a href="#">NP_079148.2</a>
Reactivity	Human
Host	Rabbit
Clonality	Polyclonal
Isotype	Rabbit IgG
Calculated MW	53288
Antigen Region	293-321

**DOK3 Antibody (C-term) - Additional Information****Gene ID** 79930**Other Names**

Docking protein 3, Downstream of tyrosine kinase 3, DOK3

**Target/Specificity**

This DOK3 antibody is generated from rabbits immunized with a KLH conjugated synthetic peptide between 293-321 amino acids from the C-terminal region of human DOK3.

**Dilution**

WB~~1:1000

IHC-P~~1:10~50

**Format**

Purified polyclonal antibody supplied in PBS with 0.09% (W/V) sodium azide. This antibody is purified through a protein A column, followed by peptide affinity purification.

**Storage**

Maintain refrigerated at 2-8°C for up to 2 weeks. For long term storage store at -20°C in small aliquots to prevent freeze-thaw cycles.

**Precautions**

DOK3 Antibody (C-term) is for research use only and not for use in diagnostic or therapeutic procedures.

**DOK3 Antibody (C-term) - Protein Information****Name** DOK3**Function** DOK proteins are enzymatically inert adaptor or scaffolding proteins. They provide a

docking platform for the assembly of multimolecular signaling complexes. DOK3 is a negative regulator of JNK signaling in B-cells through interaction with INPP5D/SHIP1. May modulate ABL1 function (By similarity).

**Cellular Location**

Cytoplasm. Cell membrane; Peripheral membrane protein; Cytoplasmic side

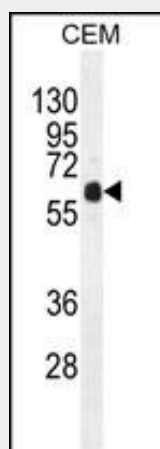
**Tissue Location**

Expressed in spleen..

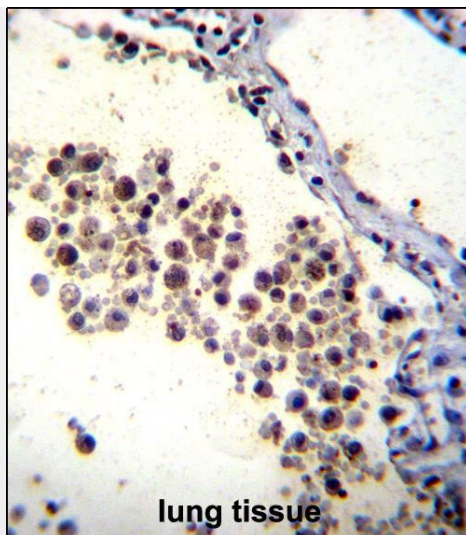
**DOK3 Antibody (C-term) - Protocols**

Provided below are standard protocols that you may find useful for product applications.

- [Western Blot](#)
- [Blocking Peptides](#)
- [Dot Blot](#)
- [Immunohistochemistry](#)
- [Immunofluorescence](#)
- [Immunoprecipitation](#)
- [Flow Cytometry](#)
- [Cell Culture](#)

**DOK3 Antibody (C-term) - Images**

DOK3 Antibody (C-term) (Cat. #AP12040b) western blot analysis in CEM cell line lysates (35ug/lane). This demonstrates the DOK3 antibody detected the DOK3 protein (arrow).



DOK3 Antibody (C-term) (Cat. #AP12040b) immunohistochemistry analysis in formalin fixed and paraffin embedded human lung tissue followed by peroxidase conjugation of the secondary antibody and DAB staining. This data demonstrates the use of DOK3 Antibody (C-term) for immunohistochemistry. Clinical relevance has not been evaluated.

#### **DOK3 Antibody (C-term) - Background**

DOK proteins are enzymatically inert adaptor or scaffolding proteins. They provide a docking platform for the assembly of multimolecular signaling complexes. DOK3 is a negative regulator of JNK signaling in B-cells through interaction with INPP5D/SHIP1. May modulate Abl function (By similarity).

#### **DOK3 Antibody (C-term) - References**

Berger, A.H., et al. Nat. Genet. 42(3):216-223(2010)  
Senis, Y.A., et al. J. Thromb. Haemost. 7(10):1718-1726(2009)  
Honma, M., et al. Genes Cells 11(2):143-151(2006)  
Robson, J.D., et al. Mol. Cell. Biol. 24(6):2332-2343(2004)  
Favre, C., et al. Genes Immun. 4(1):40-45(2003)