

**SOX3 Antibody (Center P204)**  
**Purified Rabbit Polyclonal Antibody (Pab)**  
**Catalog # AP12071c****Specification**

---

**SOX3 Antibody (Center P204) - Product Information**

Application	WB, FC,E
Primary Accession	<a href="#">P41225</a>
Other Accession	<a href="#">P53784</a> , <a href="#">Q6EJB7</a> , <a href="#">P48433</a> , <a href="#">Q5FWM3</a> , <a href="#">P55863</a> , <a href="#">Q2PG84</a> , <a href="#">P53783</a> , <a href="#">O00570</a> , <a href="#">Q57401</a> , <a href="#">Q2Z1R2</a> , <a href="#">Q6DGL6</a> , <a href="#">NP_005625.2</a>
Reactivity	Human
Predicted	Zebrafish, Chicken, Mouse, Xenopus
Host	Rabbit
Clonality	Polyclonal
Isotype	Rabbit IgG
Calculated MW	45210
Antigen Region	189-218

**SOX3 Antibody (Center P204) - Additional Information****Gene ID** 6658**Other Names**

Transcription factor SOX-3, SOX3

**Target/Specificity**

This SOX3 antibody is generated from rabbits immunized with a KLH conjugated synthetic peptide between 189-218 amino acids from the Central region of human SOX3.

**Dilution**

WB~~1:1000

FC~~1:10~50

**Format**

Purified polyclonal antibody supplied in PBS with 0.09% (W/V) sodium azide. This antibody is prepared by Saturated Ammonium Sulfate (SAS) precipitation followed by dialysis against PBS.

**Storage**

Maintain refrigerated at 2-8°C for up to 2 weeks. For long term storage store at -20°C in small aliquots to prevent freeze-thaw cycles.

**Precautions**

SOX3 Antibody (Center P204) is for research use only and not for use in diagnostic or therapeutic procedures.

**SOX3 Antibody (Center P204) - Protein Information**

**Name** SOX3

**Function** Transcription factor required during the formation of the hypothalamo-pituitary axis. May function as a switch in neuronal development. Keeps neural cells undifferentiated by counteracting the activity of proneural proteins and suppresses neuronal differentiation. Required also within the pharyngeal epithelia for craniofacial morphogenesis. Controls a genetic switch in male development. Is necessary for initiating male sex determination by directing the development of supporting cell precursors (pre-Sertoli cells) as Sertoli rather than granulosa cells (By similarity).

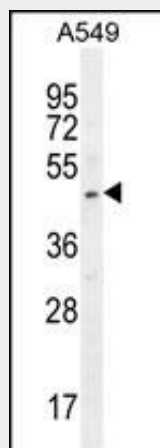
**Cellular Location**

Nucleus.

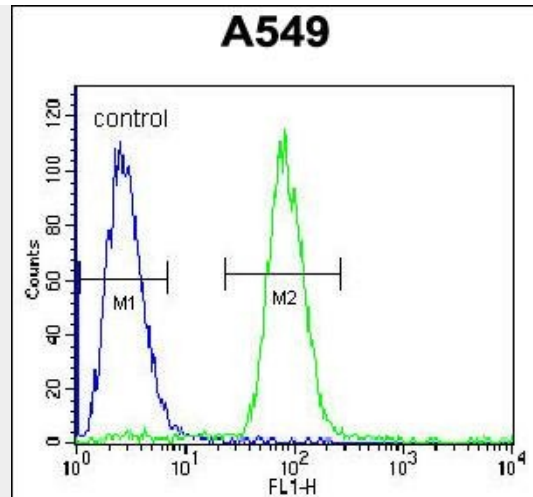
**SOX3 Antibody (Center P204) - Protocols**

Provided below are standard protocols that you may find useful for product applications.

- [Western Blot](#)
- [Blocking Peptides](#)
- [Dot Blot](#)
- [Immunohistochemistry](#)
- [Immunofluorescence](#)
- [Immunoprecipitation](#)
- [Flow Cytometry](#)
- [Cell Culture](#)

**SOX3 Antibody (Center P204) - Images**

SOX3 Antibody (Center P204) (Cat. #AP12071c) western blot analysis in A549 cell line lysates (35ug/lane). This demonstrates the SOX3 antibody detected the SOX3 protein (arrow).



SOX3 Antibody (Center P204) (Cat. #AP12071c) flow cytometric analysis of A549 cells (right histogram) compared to a negative control cell (left histogram). FITC-conjugated goat-anti-rabbit secondary antibodies were used for the analysis.

### **SOX3 Antibody (Center P204) - Background**

This gene encodes a member of the SOX (SRY-related HMG-box) family of transcription factors involved in the regulation of embryonic development and in the determination of the cell fate. The encoded protein may act as a transcriptional regulator after forming a protein complex with other proteins. Mutations in this gene have been associated with X-linked mental retardation with growth hormone deficiency.

### **SOX3 Antibody (Center P204) - References**

Dateki, S., et al. J. Clin. Endocrinol. Metab. 95(8):4043-4047(2010)  
Sato, Y., et al. Mol. Cell. Biochem. 337 (1-2), 267-275 (2010) :  
Mojsin, M., et al. Biochem. J. 425(1):107-116(2010)  
Bleyl, S.B., et al. Am. J. Med. Genet. A 143A (23), 2785-2795 (2007) :  
Krstic, A., et al. Arch. Biochem. Biophys. 467(2):163-173(2007)