

CYTSA Antibody (N-term)
Affinity Purified Rabbit Polyclonal Antibody (Pab)
Catalog # AP12106a**Specification**

CYTSA Antibody (N-term) - Product Information

Application	WB, IHC-P,E
Primary Accession	Q69YQ0
Other Accession	Q2KN99 , Q2KN98 , NP_001138940.1 , NP_056145.2
Reactivity	Mouse
Predicted	Rat
Host	Rabbit
Clonality	Polyclonal
Isotype	Rabbit IgG
Calculated MW	124544
Antigen Region	108-136

CYTSA Antibody (N-term) - Additional Information**Gene ID** 23384**Other Names**

Cytospin-A, Renal carcinoma antigen NY-REN-22, Sperm antigen with calponin homology and coiled-coil domains 1-like, SPECC1-like protein, SPECC1L, CYTSA, KIAA0376

Target/Specificity

This CYTSA antibody is generated from rabbits immunized with a KLH conjugated synthetic peptide between 108-136 amino acids from the N-terminal region of human CYTSA.

Dilution

WB~~1:1000
IHC-P~~1:10~50

Format

Purified polyclonal antibody supplied in PBS with 0.09% (W/V) sodium azide. This antibody is purified through a protein A column, followed by peptide affinity purification.

Storage

Maintain refrigerated at 2-8°C for up to 2 weeks. For long term storage store at -20°C in small aliquots to prevent freeze-thaw cycles.

Precautions

CYTSA Antibody (N-term) is for research use only and not for use in diagnostic or therapeutic procedures.

CYTSA Antibody (N-term) - Protein Information

Name SPECC1L

Synonyms CYTSA, KIAA0376

Function Involved in cytokinesis and spindle organization. May play a role in actin cytoskeleton organization and microtubule stabilization and hence required for proper cell adhesion and migration.

Cellular Location

Cytoplasm, cytoskeleton. Cytoplasm, cytoskeleton, spindle. Cell junction, gap junction.

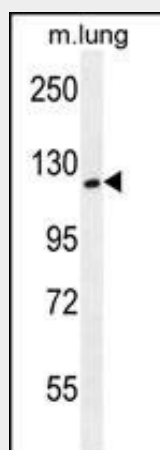
Note=Colocalizes with acetylated alpha- tubulin, gamma-tubulin and F-actin. Also observed in a ring around gamma-tubulin containing centrioles possibly in the microtubule organizing center

CYTSA Antibody (N-term) - Protocols

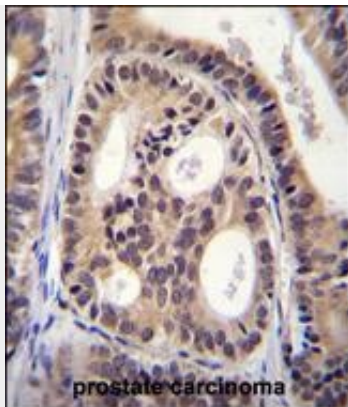
Provided below are standard protocols that you may find useful for product applications.

- [Western Blot](#)
- [Blocking Peptides](#)
- [Dot Blot](#)
- [Immunohistochemistry](#)
- [Immunofluorescence](#)
- [Immunoprecipitation](#)
- [Flow Cytometry](#)
- [Cell Culture](#)

CYTSA Antibody (N-term) - Images



CYTSA Antibody (N-term) (Cat. #AP12106a) western blot analysis in mouse lung tissue lysates (35ug/lane). This demonstrates the CYTSA antibody detected the CYTSA protein (arrow).



CYTSA Antibody (N-term) (Cat. #AP12106a) immunohistochemistry analysis in formalin fixed and paraffin embedded human prostate carcinoma followed by peroxidase conjugation of the secondary antibody and DAB staining. This data demonstrates the use of CYTSA Antibody (N-term) for immunohistochemistry. Clinical relevance has not been evaluated.

CYTSA Antibody (N-term) - Background

CYTSA is involved in cytokinesis and spindle organization.

CYTSA Antibody (N-term) - References

Scanlan, M.J., et al. Int. J. Cancer 83(4):456-464(1999)