

**PHF20 Antibody (N-term)**  
**Affinity Purified Rabbit Polyclonal Antibody (Pab)**  
**Catalog # AP12161a**

**Specification**

---

**PHF20 Antibody (N-term) - Product Information**

Application	WB, IHC-P,E
Primary Accession	<a href="#">Q9BVIQ</a>
Other Accession	<a href="#">Q8BLG0</a> , <a href="#">NP_057520.2</a>
Reactivity	Human
Predicted	Mouse
Host	Rabbit
Clonality	Polyclonal
Isotype	Rabbit IgG
Calculated MW	115386
Antigen Region	123-151

**PHF20 Antibody (N-term) - Additional Information**

**Gene ID** 51230

**Other Names**

PHD finger protein 20, Glioma-expressed antigen 2, Hepatocellular carcinoma-associated antigen 58, Novel zinc finger protein, Transcription factor TZP, PHF20, C20orf104, GLEA2, HCA58, NZF, TZP

**Target/Specificity**

This PHF20 antibody is generated from rabbits immunized with a KLH conjugated synthetic peptide between 123-151 amino acids from the N-terminal region of human PHF20.

**Dilution**

WB~~1:1000  
IHC-P~~1:10~50

**Format**

Purified polyclonal antibody supplied in PBS with 0.09% (W/V) sodium azide. This antibody is purified through a protein A column, followed by peptide affinity purification.

**Storage**

Maintain refrigerated at 2-8°C for up to 2 weeks. For long term storage store at -20°C in small aliquots to prevent freeze-thaw cycles.

**Precautions**

PHF20 Antibody (N-term) is for research use only and not for use in diagnostic or therapeutic procedures.

**PHF20 Antibody (N-term) - Protein Information**

**Name** PHF20

**Synonyms** C20orf104, GLEA2, HCA58, NZF, TZP

**Function** Methyllysine-binding protein, component of the MOF histone acetyltransferase protein complex. Not required for maintaining the global histone H4 'Lys-16' acetylation (H4K16ac) levels or locus specific histone acetylation, but instead works downstream in transcriptional regulation of MOF target genes (By similarity). As part of the NSL complex it may be involved in acetylation of nucleosomal histone H4 on several lysine residues. Contributes to methyllysine- dependent p53/TP53 stabilization and up-regulation after DNA damage.

**Cellular Location**

Nucleus.

**Tissue Location**

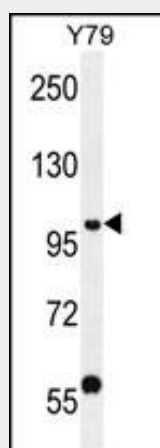
Expressed in heart, kidney, liver, lung, pancreas, placenta, spleen and testis. Not expressed in brain, skeletal muscle, colon, ovary, prostate, small intestine and thymus. Expressed in colon and ovary cancer cell lines while it is not expressed in the respective normal tissues.

**PHF20 Antibody (N-term) - Protocols**

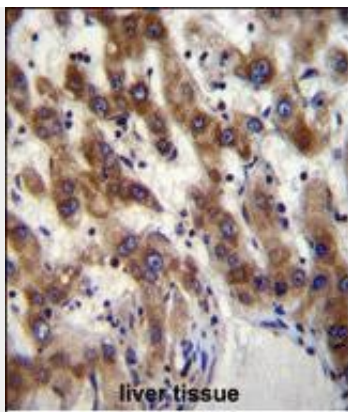
Provided below are standard protocols that you may find useful for product applications.

- [Western Blot](#)
- [Blocking Peptides](#)
- [Dot Blot](#)
- [Immunohistochemistry](#)
- [Immunofluorescence](#)
- [Immunoprecipitation](#)
- [Flow Cytometry](#)
- [Cell Culture](#)

**PHF20 Antibody (N-term) - Images**



PHF20 Antibody (N-term) (Cat. #AP12161a) western blot analysis in Y79 cell line lysates (35ug/lane). This demonstrates the PHF20 antibody detected the PHF20 protein (arrow).



PHF20 Antibody (N-term) (Cat. #AP12161a) immunohistochemistry analysis in formalin fixed and paraffin embedded human liver tissue followed by peroxidase conjugation of the secondary antibody and DAB staining. This data demonstrates the use of PHF20 Antibody (N-term) for immunohistochemistry. Clinical relevance has not been evaluated.

#### **PHF20 Antibody (N-term) - Background**

PHF20 is possible a transcription factor.

#### **PHF20 Antibody (N-term) - References**

Bankovic, J., et al. Lung Cancer 67(2):151-159(2010)  
Heisel, S.M., et al. PLoS ONE 3 (5), E2164 (2008) :  
Olsen, J.V., et al. Cell 127(3):635-648(2006)  
Pallasch, C.P., et al. Int. J. Cancer 117(3):456-459(2005)  
Dou, Y., et al. Cell 121(6):873-885(2005)