

**TBPL2 Antibody (N-term)**  
**Affinity Purified Rabbit Polyclonal Antibody (Pab)**  
**Catalog # AP12171A****Specification**

---

**TBPL2 Antibody (N-term) - Product Information**

Application	IF, WB, IHC-P,E
Primary Accession	<a href="#">O6SJ96</a>
Other Accession	<a href="#">NP_950248.1</a>
Reactivity	Human
Host	Rabbit
Clonality	Polyclonal
Isotype	Rabbit IgG
Antigen Region	12-39

**TBPL2 Antibody (N-term) - Additional Information****Gene ID** 387332**Other Names**

TATA box-binding protein-like protein 2, TBP-like protein 2, TATA box-binding protein-related factor 3, TBP-related factor 3, TBPL2 {ECO:0000312|EMBL:AAI171861, ECO:0000312|HGNC:HGNC:19841}

**Target/Specificity**

This TBPL2 antibody is generated from rabbits immunized with a KLH conjugated synthetic peptide between 12-39 amino acids from the N-terminal region of human TBPL2.

**Dilution**

IF~~1:10~50  
WB~~1:1000  
IHC-P~~1:10~50

**Format**

Purified polyclonal antibody supplied in PBS with 0.09% (W/V) sodium azide. This antibody is purified through a protein A column, followed by peptide affinity purification.

**Storage**

Maintain refrigerated at 2-8°C for up to 2 weeks. For long term storage store at -20°C in small aliquots to prevent freeze-thaw cycles.

**Precautions**

TBPL2 Antibody (N-term) is for research use only and not for use in diagnostic or therapeutic procedures.

**TBPL2 Antibody (N-term) - Protein Information****Name** TBPL2 {ECO:0000312|EMBL:AAI17186.1, ECO:0000312|HGNC:HGNC:19841}

**Function** Transcription factor required in complex with TAF3 for the differentiation of myoblasts into myocytes. The complex replaces TFIID at specific promoters at an early stage in the differentiation process (By similarity).

**Cellular Location**

Cytoplasm. Nucleus. Note=Present in the cytoplasm during cytokinesis.

**Tissue Location**

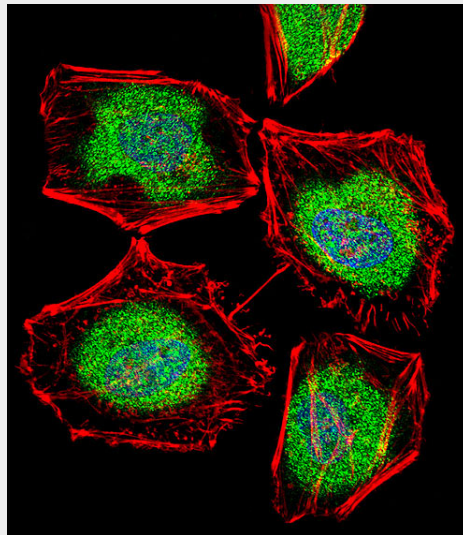
Ubiquitously expressed in all tissues examined with highest levels in heart, lung, ovary, spleen and testes

**TBPL2 Antibody (N-term) - Protocols**

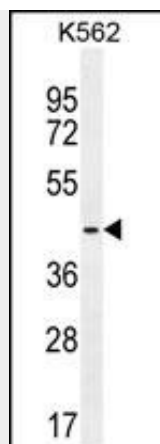
Provided below are standard protocols that you may find useful for product applications.

- [Western Blot](#)
- [Blocking Peptides](#)
- [Dot Blot](#)
- [Immunohistochemistry](#)
- [Immunofluorescence](#)
- [Immunoprecipitation](#)
- [Flow Cytometry](#)
- [Cell Culture](#)

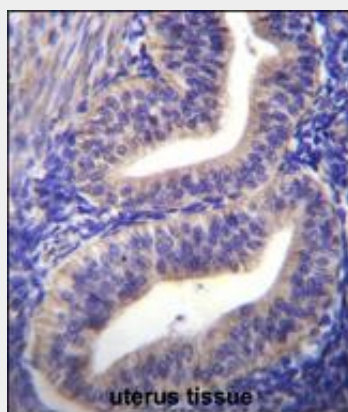
**TBPL2 Antibody (N-term) - Images**



Fluorescent confocal image of HeLa cell stained with TBPL2 Antibody (N-term)(Cat#AP12171a).HeLa cells were fixed with 4% PFA (20 min), permeabilized with Triton X-100 (0.1%, 10 min), then incubated with TBPL2 primary antibody (1:25, 1 h at 37°C). For secondary antibody, Alexa Fluor® 488 conjugated donkey anti-rabbit antibody (green) was used (1:400, 50 min at 37°C).Cytoplasmic actin was counterstained with Alexa Fluor® 555 (red) conjugated Phalloidin (7units/ml, 1 h at 37°C). Nuclei were counterstained with DAPI (blue) (10 µg/ml, 10 min). TBPL2 immunoreactivity is localized to Nucleus and Cytoplasm significantly.



TBPL2 Antibody (N-term) (Cat. #AP12171a) western blot analysis in K562 cell line lysates (35ug/lane). This demonstrates the TBPL2 antibody detected the TBPL2 protein (arrow).



TBPL2 Antibody (N-term) (Cat. #AP12171a) immunohistochemistry analysis in formalin fixed and paraffin embedded human uterus tissue followed by peroxidase conjugation of the secondary antibody and DAB staining. This data demonstrates the use of TBPL2 Antibody (N-term) for immunohistochemistry. Clinical relevance has not been evaluated.

#### **TBPL2 Antibody (N-term) - Background**

TBPL2 is a transcription factor required in complex with TAF3 for the differentiation of myoblasts into myocytes. The complex replaces TFIID at specific promoters at an early stage in the differentiation process (By similarity).

#### **TBPL2 Antibody (N-term) - References**

- Rose, J. Phd, et al. Mol. Med. (2010) In press :
- Deato, M.D., et al. Genes Dev. 21(17):2137-2149(2007)
- Di Pietro, C., et al. DNA Cell Biol. 26(6):369-385(2007)
- Persengiev, S.P., et al. Proc. Natl. Acad. Sci. U.S.A. 100(25):14887-14891(2003)