

PRMT8 Antibody (C-term)
Purified Rabbit Polyclonal Antibody (Pab)
Catalog # AP1219b**Specification**

PRMT8 Antibody (C-term) - Product Information

Application	WB,E
Primary Accession	O9NR22
Other Accession	Q6PAK3
Reactivity	Human
Predicted	Mouse
Host	Rabbit
Clonality	Polyclonal
Isotype	Rabbit IgG
Calculated MW	45291
Antigen Region	344-373

PRMT8 Antibody (C-term) - Additional Information**Gene ID** 56341**Other Names**

Protein arginine N-methyltransferase 8, 211-, Heterogeneous nuclear ribonucleoprotein methyltransferase-like protein 4, PRMT8, HRMT1L3, HRMT1L4

Target/Specificity

This PRMT8 antibody is generated from rabbits immunized with a KLH conjugated synthetic peptide between 344-373 amino acids from the C-terminal region of human PRMT8.

Dilution

WB~~1:1000

Format

Purified polyclonal antibody supplied in PBS with 0.09% (W/V) sodium azide. This antibody is prepared by Saturated Ammonium Sulfate (SAS) precipitation followed by dialysis against PBS.

Storage

Maintain refrigerated at 2-8°C for up to 2 weeks. For long term storage store at -20°C in small aliquots to prevent freeze-thaw cycles.

Precautions

PRMT8 Antibody (C-term) is for research use only and not for use in diagnostic or therapeutic procedures.

PRMT8 Antibody (C-term) - Protein Information**Name** PRMT8 ([HGNC:5188](#))

Synonyms HRMT1L3, HRMT1L4

Function S-adenosyl-L-methionine-dependent and membrane-associated arginine methyltransferase that can both catalyze the formation of omega-N monomethylarginine (MMA) and asymmetrical dimethylarginine (aDMA) in proteins such as NIFK, myelin basic protein, histone H4, H2A and H2A/H2B dimer (PubMed:[16051612](#), PubMed:[17925405](#), PubMed:[26876602](#), PubMed:[26529540](#)). Able to mono- and dimethylate EWS protein; however its precise role toward EWS remains unclear as it still interacts with fully methylated EWS (PubMed:[18320585](#)).

Cellular Location

Cell membrane; Lipid-anchor; Cytoplasmic side

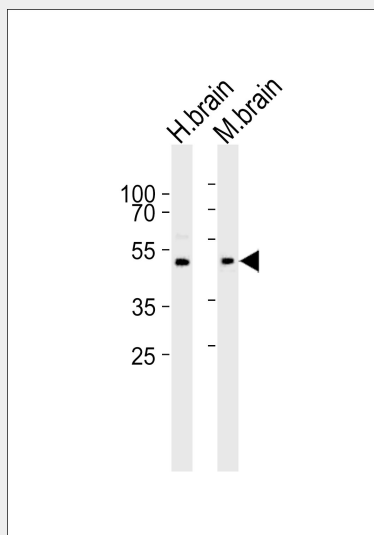
Tissue Location

Brain-specific..

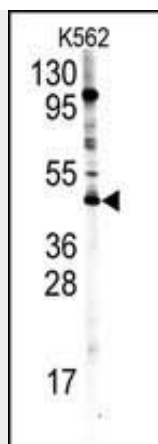
PRMT8 Antibody (C-term) - Protocols

Provided below are standard protocols that you may find useful for product applications.

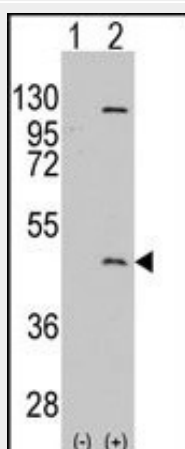
- [Western Blot](#)
- [Blocking Peptides](#)
- [Dot Blot](#)
- [Immunohistochemistry](#)
- [Immunofluorescence](#)
- [Immunoprecipitation](#)
- [Flow Cytometry](#)
- [Cell Culture](#)

PRMT8 Antibody (C-term) - Images

Western blot analysis of lysates from human brain, mouse brain tissue lysate (from left to right), using PRMT8 Antibody (C-term)(Cat. #AP1219b). AP1219b was diluted at 1:1000 at each lane. A goat anti-rabbit IgG H&L(HRP) at 1:10000 dilution was used as the secondary antibody. Lysates at 35ug per lane.



Western blot analysis of PRMT8 Antibody (C-term) (Cat.#AP1219b) in K562 cell line lysates (35ug/lane). PRMT8 (arrow) was detected using the purified Pab.



Western blot analysis of PRMT8 (arrow) using rabbit polyclonal PRMT8 Antibody (C-term) (Cat.#AP1219b). 293 cell lysates (2 ug/lane) either nontransfected (Lane 1) or transiently transfected with the PRMT8 gene (Lane 2) (Origene Technologies).

PRMT8 Antibody (C-term) - Background

Protein arginine methylation plays a role in signal transduction, RNA processing, transcriptional regulation, and DNA repair. PRMT8, a protein arginine N-methyltransferase most closely related to PRMT1, methylates the guanidino nitrogens of arginyl residues in some proteins. This protein associates with the plasma membrane following myristoylation and exhibits a brain-specific expression pattern, making it unique within this family of enzymes.

PRMT8 Antibody (C-term) - References

Lee,J., J. Biol. Chem. 280 (38), 32890-32896 (2005)