

**MAFB Antibody (C-term)**  
**Affinity Purified Rabbit Polyclonal Antibody (Pab)**  
**Catalog # AP12233B**

**Specification**

---

**MAFB Antibody (C-term) - Product Information**

Application	WB, FC,E
Primary Accession	<a href="#">Q9Y5Q3</a>
Other Accession	<a href="#">Q6DE84</a> , <a href="#">P54842</a> , <a href="#">P54841</a> , <a href="#">Q2PFS4</a> , <a href="#">NP_005452.2</a>
Reactivity	Human
Predicted	Monkey, Mouse, Rat, Xenopus
Host	Rabbit
Clonality	Polyclonal
Isotype	Rabbit IgG
Calculated MW	35792
Antigen Region	266-292

**MAFB Antibody (C-term) - Additional Information**

**Gene ID** 9935

**Other Names**

Transcription factor MafB, Maf-B, V-maf musculoaponeurotic fibrosarcoma oncogene homolog B, MAFB, KRML

**Target/Specificity**

This MAFB antibody is generated from rabbits immunized with a KLH conjugated synthetic peptide between 266-292 amino acids from the C-terminal region of human MAFB.

**Dilution**

WB~~1:1000  
FC~~1:10~50

**Format**

Purified polyclonal antibody supplied in PBS with 0.09% (W/V) sodium azide. This antibody is purified through a protein A column, followed by peptide affinity purification.

**Storage**

Maintain refrigerated at 2-8°C for up to 2 weeks. For long term storage store at -20°C in small aliquots to prevent freeze-thaw cycles.

**Precautions**

MAFB Antibody (C-term) is for research use only and not for use in diagnostic or therapeutic procedures.

**MAFB Antibody (C-term) - Protein Information**

**Name** MAFB

**Synonyms** KRML

**Function** Acts as a transcriptional activator or repressor (PubMed:[27181683](#)). Plays a pivotal role in regulating lineage-specific hematopoiesis by repressing ETS1-mediated transcription of erythroid- specific genes in myeloid cells. Required for monocytic, macrophage, osteoclast, podocyte and islet beta cell differentiation. Involved in renal tubule survival and F4/80 maturation. Activates the insulin and glucagon promoters. Together with PAX6, transactivates weakly the glucagon gene promoter through the G1 element. SUMO modification controls its transcriptional activity and ability to specify macrophage fate. Binds element G1 on the glucagon promoter (By similarity). Involved either as an oncogene or as a tumor suppressor, depending on the cell context. Required for the transcriptional activation of HOXB3 in the rhombomere r5 in the hindbrain (By similarity).

**Cellular Location**

Nucleus {ECO:0000255|PROSITE-ProRule:PRU00978}.

**Tissue Location**

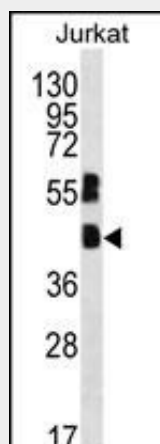
Ubiquitous..

**MAFB Antibody (C-term) - Protocols**

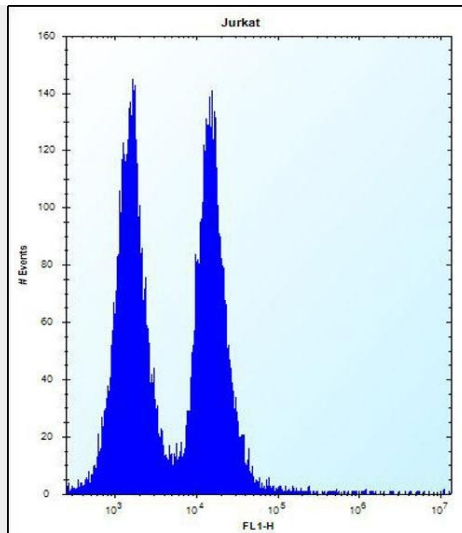
Provided below are standard protocols that you may find useful for product applications.

- [Western Blot](#)
- [Blocking Peptides](#)
- [Dot Blot](#)
- [Immunohistochemistry](#)
- [Immunofluorescence](#)
- [Immunoprecipitation](#)
- [Flow Cytometry](#)
- [Cell Culture](#)

**MAFB Antibody (C-term) - Images**



MAFB Antibody (C-term) (Cat. #AP12233b) western blot analysis in Jurkat cell line lysates (35ug/lane). This demonstrates the MAFB antibody detected the MAFB protein (arrow).



MAFB Antibody (C-term) (Cat. #AP12233b) flow cytometric analysis of Jurkat cells (right histogram) compared to a negative control cell (left histogram). FITC-conjugated donkey-anti-rabbit secondary antibodies were used for the analysis.

#### **MAFB Antibody (C-term) - Background**

The protein encoded by this gene is a basic leucine zipper (bZIP) transcription factor that plays an important role in the regulation of lineage-specific hematopoiesis. The encoded nuclear protein represses ETS1-mediated transcription of erythroid-specific genes in myeloid cells. This gene contains no introns. [provided by RefSeq].

#### **MAFB Antibody (C-term) - References**

Kim, H., et al. Nat. Immunol. 11(8):743-750(2010)  
Beaty, T.H., et al. Nat. Genet. 42(6):525-529(2010)  
Vatsveen, T.K., et al. Leuk. Res. 33(12):1670-1677(2009)  
Zanocco-Marani, T., et al. Exp. Cell Res. 315(11):1798-1808(2009)  
Kathiresan, S., et al. Nat. Genet. 41(1):56-65(2009)