

SNX25 Antibody (Center)
Affinity Purified Rabbit Polyclonal Antibody (Pab)
Catalog # AP12243c**Specification**

SNX25 Antibody (Center) - Product Information

Application	WB, FC,E
Primary Accession	O9H3E2
Other Accession	NP_114159.2
Reactivity	Human
Host	Rabbit
Clonality	Polyclonal
Isotype	Rabbit IgG
Calculated MW	97945
Antigen Region	399-426

SNX25 Antibody (Center) - Additional Information**Gene ID** 83891**Other Names**

Sorting nexin-25, SNX25

Target/Specificity

This SNX25 antibody is generated from rabbits immunized with a KLH conjugated synthetic peptide between 399-426 amino acids from the Central region of human SNX25.

Dilution

WB~~1:1000

FC~~1:10~50

Format

Purified polyclonal antibody supplied in PBS with 0.09% (W/V) sodium azide. This antibody is purified through a protein A column, followed by peptide affinity purification.

Storage

Maintain refrigerated at 2-8°C for up to 2 weeks. For long term storage store at -20°C in small aliquots to prevent freeze-thaw cycles.

Precautions

SNX25 Antibody (Center) is for research use only and not for use in diagnostic or therapeutic procedures.

SNX25 Antibody (Center) - Protein Information**Name** SNX25**Function** May be involved in several stages of intracellular trafficking.

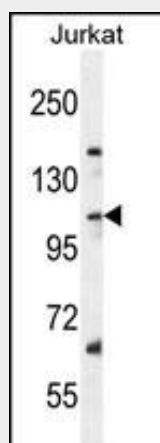
Cellular Location

Endosome membrane; Peripheral membrane protein Note=Detected in endosome-derived secreted vesicles (exosomes) from malignant pleural effusions

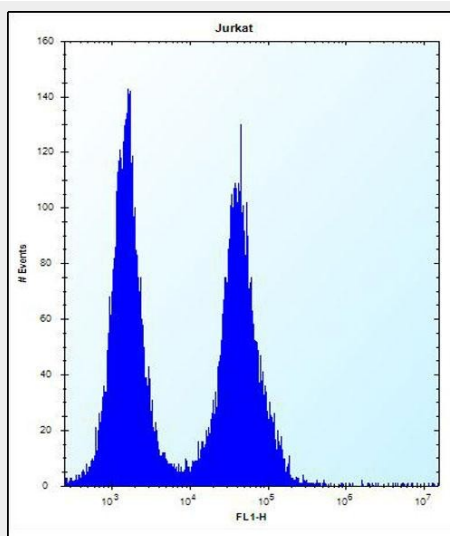
SNX25 Antibody (Center) - Protocols

Provided below are standard protocols that you may find useful for product applications.

- [Western Blot](#)
- [Blocking Peptides](#)
- [Dot Blot](#)
- [Immunohistochemistry](#)
- [Immunofluorescence](#)
- [Immunoprecipitation](#)
- [Flow Cytometry](#)
- [Cell Culture](#)

SNX25 Antibody (Center) - Images

SNX25 Antibody (Center) (Cat. #AP12243c) western blot analysis in Jurkat cell line lysates (35ug/lane). This demonstrates the SNX25 antibody detected the SNX25 protein (arrow).



SNX25 Antibody (Center) (Cat. #AP12243c) flow cytometric analysis of Jurkat cells (right

histogram) compared to a negative control cell (left histogram).FITC-conjugated donkey-anti-rabbit secondary antibodies were used for the analysis.

SNX25 Antibody (Center) - Background

SNX25 may be involved in several stages of intracellular trafficking (By similarity).

SNX25 Antibody (Center) - References

Olsen, J.V., et al. Cell 127(3):635-648(2006)

Olsen, J.V., et al. Cell 127(3):635-648(2006)

Worby, C.A., et al. Nat. Rev. Mol. Cell Biol. 3(12):919-931(2002)