

FOXO6 Antibody (Center)
Affinity Purified Rabbit Polyclonal Antibody (Pab)
Catalog # AP12340C**Specification**

FOXO6 Antibody (Center) - Product Information

Application	IF, WB,E
Primary Accession	A8MYZ6
Other Accession	Q70KY4 , XP_002342143.1
Reactivity	Mouse
Host	Rabbit
Clonality	Polyclonal
Isotype	Rabbit IgG
Antigen Region	154-181

FOXO6 Antibody (Center) - Additional Information**Other Names**

Forkhead box protein O6, FOXO6

Target/Specificity

This FOXO6 antibody is generated from rabbits immunized with a KLH conjugated synthetic peptide between 154-181 amino acids from the Central region of human FOXO6.

Dilution

IF~~1:10~50

WB~~1:1000

Format

Purified polyclonal antibody supplied in PBS with 0.09% (W/V) sodium azide. This antibody is purified through a protein A column, followed by peptide affinity purification.

Storage

Maintain refrigerated at 2-8°C for up to 2 weeks. For long term storage store at -20°C in small aliquots to prevent freeze-thaw cycles.

Precautions

FOXO6 Antibody (Center) is for research use only and not for use in diagnostic or therapeutic procedures.

FOXO6 Antibody (Center) - Protein Information

Name FOXO6

Function Transcriptional activator.

Cellular Location

Cytoplasm. Nucleus {ECO:0000255|PROSITE-ProRule:PRU00089}. Note=When phosphorylated,

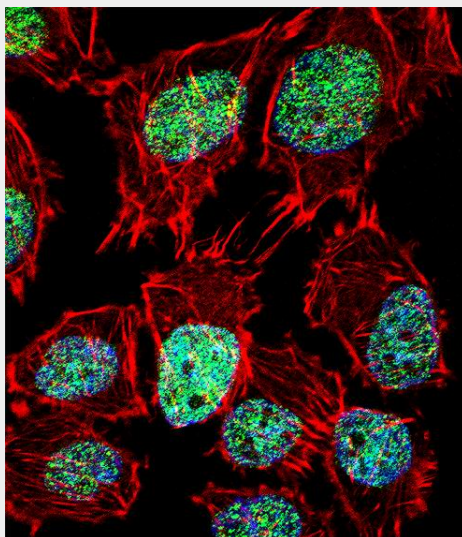
translocated from nucleus to cytoplasm. High nuclear localization after stimulation with growth factors (By similarity).

FOXO6 Antibody (Center) - Protocols

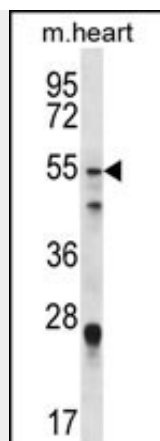
Provided below are standard protocols that you may find useful for product applications.

- [Western Blot](#)
- [Blocking Peptides](#)
- [Dot Blot](#)
- [Immunohistochemistry](#)
- [Immunofluorescence](#)
- [Immunoprecipitation](#)
- [Flow Cytometry](#)
- [Cell Culture](#)

FOXO6 Antibody (Center) - Images



Fluorescent confocal image of U251 cell stained with FOXO6 Antibody (Center)(Cat#AP12340c). U251 cells were fixed with 4% PFA (20 min), permeabilized with Triton X-100 (0.1%, 10 min), then incubated with FOXO6 primary antibody (1:25, 1 h at 37°C). For secondary antibody, Alexa Fluor® 488 conjugated donkey anti-rabbit antibody (green) was used (1:400, 50 min at 37°C). Cytoplasmic actin was counterstained with Alexa Fluor® 555 (red) conjugated Phalloidin (7units/ml, 1 h at 37°C). Nuclei were counterstained with DAPI (blue) (10 µg/ml, 10 min). FOXO6 immunoreactivity is localized to Cytoplasm and Nucleus significantly.



FOXO6 Antibody (Center) (Cat. #AP12340c) western blot analysis in mouse heart tissue lysates (35ug/lane). This demonstrates the FOXO6 antibody detected the FOXO6 protein (arrow).

FOXO6 Antibody (Center) - Background

FOXO6 is a transcriptional activator (By similarity).