

MDM1 Antibody (C-term)
Affinity Purified Rabbit Polyclonal Antibody (Pab)
Catalog # AP12344b**Specification**

MDM1 Antibody (C-term) - Product Information

Application	WB, IHC-P,E
Primary Accession	Q8TC05
Other Accession	NP_059136.2
Reactivity	Human
Host	Rabbit
Clonality	Polyclonal
Isotype	Rabbit IgG
Calculated MW	80735
Antigen Region	656-684

MDM1 Antibody (C-term) - Additional Information**Gene ID** 56890**Other Names**

Nuclear protein MDM1, MDM1

Target/Specificity

This MDM1 antibody is generated from rabbits immunized with a KLH conjugated synthetic peptide between 656-684 amino acids from the C-terminal region of human MDM1.

Dilution

WB~~1:1000

IHC-P~~1:10~50

Format

Purified polyclonal antibody supplied in PBS with 0.09% (W/V) sodium azide. This antibody is purified through a protein A column, followed by peptide affinity purification.

Storage

Maintain refrigerated at 2-8°C for up to 2 weeks. For long term storage store at -20°C in small aliquots to prevent freeze-thaw cycles.

Precautions

MDM1 Antibody (C-term) is for research use only and not for use in diagnostic or therapeutic procedures.

MDM1 Antibody (C-term) - Protein Information**Name** MDM1**Function** Microtubule-binding protein that negatively regulates centriole duplication. Binds to and

stabilizes microtubules (PubMed:[26337392](#)).

Cellular Location

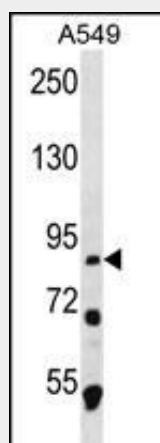
Nucleus. Cytoplasm, cytoskeleton, microtubule organizing center, centrosome. Cytoplasm, cytoskeleton, microtubule organizing center, centrosome, centriole. Note=Localizes to the centriole lumen

MDM1 Antibody (C-term) - Protocols

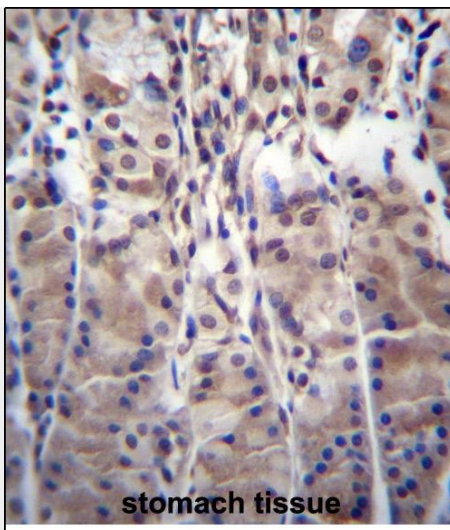
Provided below are standard protocols that you may find useful for product applications.

- [Western Blot](#)
- [Blocking Peptides](#)
- [Dot Blot](#)
- [Immunohistochemistry](#)
- [Immunofluorescence](#)
- [Immunoprecipitation](#)
- [Flow Cytometry](#)
- [Cell Culture](#)

MDM1 Antibody (C-term) - Images



MDM1 Antibody (C-term) (Cat. #AP12344b) western blot analysis in A549 cell line lysates (35ug/lane). This demonstrates the MDM1 antibody detected the MDM1 protein (arrow).



MDM1 Antibody (C-term) (Cat. #AP12344b) immunohistochemistry analysis in formalin fixed and paraffin embedded human stomach tissue followed by peroxidase conjugation of the secondary antibody and DAB staining. This data demonstrates the use of MDM1 Antibody (C-term) for immunohistochemistry. Clinical relevance has not been evaluated.

MDM1 Antibody (C-term) - Background

This gene encodes a nuclear protein similar to the mouse double minute 1 protein. The mouse gene is located in double minute (DM) chromatin particles and is amplified in the mouse transformed 3T3 cell line, and the protein is able to bind to p53. In mouse several transcripts have been described for this gene which result from alternative polyadenylation, splicing and exon usage.

MDM1 Antibody (C-term) - References

Chang, B., et al. Hum. Mol. Genet. 17(24):3929-3941(2008)
Oh, J.H., et al. Mamm. Genome 16(12):942-954(2005)
Snyder, L.C., et al. J. Biol. Chem. 263(32):17150-17158(1988)