

**KRTAP25-1 Antibody (C-term)**  
**Affinity Purified Rabbit Polyclonal Antibody (Pab)**  
**Catalog # AP12354b****Specification**

---

**KRTAP25-1 Antibody (C-term) - Product Information**

Application	WB, FC,E
Primary Accession	<a href="#">Q3LHN0</a>
Other Accession	<a href="#">NP_001122070.1</a>
Reactivity	Human
Host	Rabbit
Clonality	Polyclonal
Isotype	Rabbit IgG
Calculated MW	11738
Antigen Region	73-102

**KRTAP25-1 Antibody (C-term) - Additional Information****Gene ID** 100131902**Other Names**

Keratin-associated protein 25-1, KRTAP25-1, KAP251

**Target/Specificity**

This KRTAP25-1 antibody is generated from rabbits immunized with a KLH conjugated synthetic peptide between 73-102 amino acids from the C-terminal region of human KRTAP25-1.

**Dilution**

WB~~1:1000

FC~~1:10~50

**Format**

Purified polyclonal antibody supplied in PBS with 0.09% (W/V) sodium azide. This antibody is purified through a protein A column, followed by peptide affinity purification.

**Storage**

Maintain refrigerated at 2-8°C for up to 2 weeks. For long term storage store at -20°C in small aliquots to prevent freeze-thaw cycles.

**Precautions**

KRTAP25-1 Antibody (C-term) is for research use only and not for use in diagnostic or therapeutic procedures.

**KRTAP25-1 Antibody (C-term) - Protein Information****Name** KRTAP25-1**Synonyms** KAP25.1

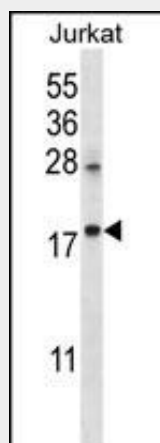
**Function** In the hair cortex, hair keratin intermediate filaments are embedded in an interfilamentous matrix, consisting of hair keratin- associated proteins (KRTAP), which are essential for the formation of a rigid and resistant hair shaft through their extensive disulfide bond cross-linking with abundant cysteine residues of hair keratins. The matrix proteins include the high-sulfur and high-glycine-tyrosine keratins (By similarity).

### KRTAP25-1 Antibody (C-term) - Protocols

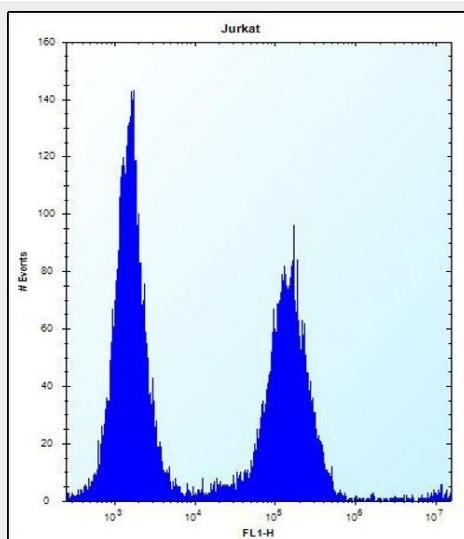
Provided below are standard protocols that you may find useful for product applications.

- [Western Blot](#)
- [Blocking Peptides](#)
- [Dot Blot](#)
- [Immunohistochemistry](#)
- [Immunofluorescence](#)
- [Immunoprecipitation](#)
- [Flow Cytometry](#)
- [Cell Culture](#)

### KRTAP25-1 Antibody (C-term) - Images



KRTAP25-1 Antibody (C-term) (Cat. #AP12354b) western blot analysis in Jurkat cell line lysates (35ug/lane). This demonstrates the KRTAP25-1 antibody detected the KRTAP25-1 protein (arrow).



KRTAP25-1 Antibody (C-term) (Cat. #AP12354b) flow cytometric analysis of Jurkat cells (right histogram) compared to a negative control cell (left histogram). FITC-conjugated donkey-anti-rabbit secondary antibodies were used for the analysis.

#### **KRTAP25-1 Antibody (C-term) - Background**

In the hair cortex, hair keratin intermediate filaments are embedded in an interfilamentous matrix, consisting of hair keratin-associated proteins (KRTAP), which are essential for the formation of a rigid and resistant hair shaft through their extensive disulfide bond cross-linking with abundant cysteine residues of hair keratins. The matrix proteins include the high-sulfur and high-glycine-tyrosine keratins (By similarity).

#### **KRTAP25-1 Antibody (C-term) - References**

Hattori, M., et al. Nature 405(6784):311-319(2000)