

C109B Antibody (C-term)
Affinity Purified Rabbit Polyclonal Antibody (Pab)
Catalog # AP12355b

Specification

C109B Antibody (C-term) - Product Information

Application	WB,E
Primary Accession	O9NWR8
Other Accession	NP_060388.2
Reactivity	Human
Host	Rabbit
Clonality	Polyclonal
Isotype	Rabbit IgG
Antigen Region	291-320

C109B Antibody (C-term) - Additional Information

Gene ID 55013

Other Names

Calcium uniporter regulatory subunit MCUB, mitochondrial, MCUB, Coiled-coil domain-containing protein 109B, CCDC109B, MCUB

Target/Specificity

This C109B antibody is generated from rabbits immunized with a KLH conjugated synthetic peptide between 291-320 amino acids from the C-terminal region of human C109B.

Dilution

WB~~1:1000

Format

Purified polyclonal antibody supplied in PBS with 0.09% (W/V) sodium azide. This antibody is purified through a protein A column, followed by peptide affinity purification.

Storage

Maintain refrigerated at 2-8°C for up to 2 weeks. For long term storage store at -20°C in small aliquots to prevent freeze-thaw cycles.

Precautions

C109B Antibody (C-term) is for research use only and not for use in diagnostic or therapeutic procedures.

C109B Antibody (C-term) - Protein Information

Name MCUB {ECO:0000303|PubMed:24231807, ECO:0000312|HGNC:HGNC:26076}

Function Negatively regulates the activity of MCU, the mitochondrial inner membrane calcium uniporter, and thereby modulates calcium uptake into the mitochondrion. Does not form functional

calcium channels by itself. Mitochondrial calcium homeostasis plays key roles in cellular physiology and regulates cell bioenergetics, cytoplasmic calcium signals and activation of cell death pathways.

Cellular Location

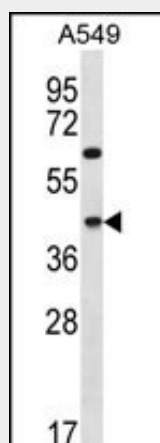
Mitochondrion inner membrane; Multi-pass membrane protein

C109B Antibody (C-term) - Protocols

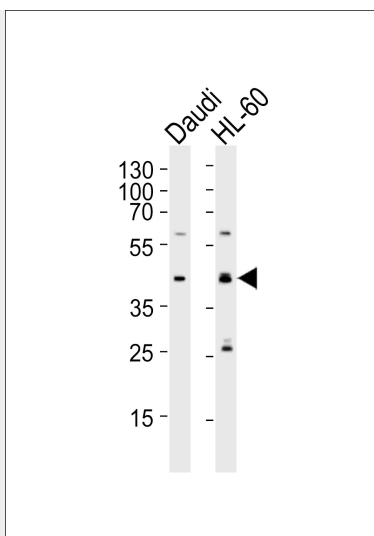
Provided below are standard protocols that you may find useful for product applications.

- [Western Blot](#)
- [Blocking Peptides](#)
- [Dot Blot](#)
- [Immunohistochemistry](#)
- [Immunofluorescence](#)
- [Immunoprecipitation](#)
- [Flow Cytometry](#)
- [Cell Culture](#)

C109B Antibody (C-term) - Images



C109B Antibody (C-term) (Cat. #AP12355b) western blot analysis in A549 cell line lysates (35ug/lane). This demonstrates the C109B antibody detected the C109B protein (arrow).



Western blot analysis of lysates from Daudi, HL-60 cell line (from left to right), using C109B Antibody (C-term)(Cat. #AP12355b). AP12355b was diluted at 1:1000 at each lane. A goat anti-rabbit IgG H&L(HRP) at 1:5000 dilution was used as the secondary antibody. Lysates at 35ug per lane.

C109B Antibody (C-term) - References

Kalsi, G., et al. Hum. Mol. Genet. 19(12):2497-2506(2010)
Hosgood, H.D. III, et al. Occup Environ Med 66(12):848-853(2009)
Lamesch, P., et al. Genomics 89(3):307-315(2007)
Oh, J.H., et al. Mamm. Genome 16(12):942-954(2005)

C109B Antibody (C-term) - Citations

- [Impaired mitochondrial calcium efflux contributes to disease progression in models of Alzheimer's disease.](#)