

**ESPNL Antibody (C-term)**  
**Affinity Purified Rabbit Polyclonal Antibody (Pab)**  
**Catalog # AP12361b**

**Specification**

---

**ESPNL Antibody (C-term) - Product Information**

Application	WB,E
Primary Accession	<a href="#">Q6ZVH7</a>
Other Accession	<a href="#">NP_919288.2</a>
Reactivity	Human, Mouse
Host	Rabbit
Clonality	Polyclonal
Isotype	Rabbit IgG
Calculated MW	108132
Antigen Region	903-932

**ESPNL Antibody (C-term) - Additional Information**

**Gene ID** 339768

**Other Names**

Espin-like protein, ESPNL

**Target/Specificity**

This ESPNL antibody is generated from rabbits immunized with a KLH conjugated synthetic peptide between 903-932 amino acids from the C-terminal region of human ESPNL.

**Dilution**

WB~~1:500

**Format**

Purified polyclonal antibody supplied in PBS with 0.09% (W/V) sodium azide. This antibody is purified through a protein A column, followed by peptide affinity purification.

**Storage**

Maintain refrigerated at 2-8°C for up to 2 weeks. For long term storage store at -20°C in small aliquots to prevent freeze-thaw cycles.

**Precautions**

ESPNL Antibody (C-term) is for research use only and not for use in diagnostic or therapeutic procedures.

**ESPNL Antibody (C-term) - Protein Information**

**Name** ESPNL

**Function** Binds to but does not cross-link actin. Required for the formation and maintenance of inner ear hair cell stereocilia and staircase formation. Essential for normal hearing.

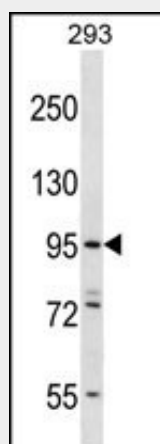
**Cellular Location**

Cell projection, stereocilium {ECO:0000250|UniProtKB:Q3UYR4}

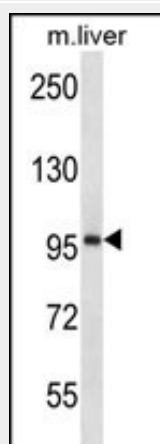
**ESPNL Antibody (C-term) - Protocols**

Provided below are standard protocols that you may find useful for product applications.

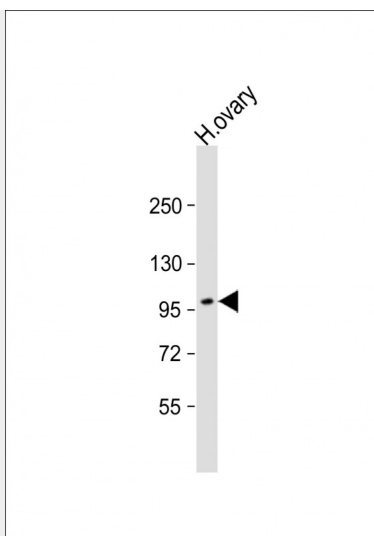
- [Western Blot](#)
- [Blocking Peptides](#)
- [Dot Blot](#)
- [Immunohistochemistry](#)
- [Immunofluorescence](#)
- [Immunoprecipitation](#)
- [Flow Cytometry](#)
- [Cell Culture](#)

**ESPNL Antibody (C-term) - Images**

ESPNL Antibody (C-term) (Cat. #AP12361b) western blot analysis in 293 cell line lysates (35ug/lane). This demonstrates the ESPNL antibody detected the ESPNL protein (arrow).



ESPNL Antibody (C-term) (Cat. #AP12361b) western blot analysis in mouse liver tissue lysates (35ug/lane). This demonstrates the ESPNL antibody detected the ESPNL protein (arrow).



Anti-ESPNL Antibody (C-term) at 1:500 dilution + human ovary lysate Lysates/proteins at 20  $\mu$ g per lane. Secondary Goat Anti-Rabbit IgG, (H+L), Peroxidase conjugated at 1/10000 dilution. Predicted band size : 108 kDa Blocking/Dilution buffer: 5% NFDM/TBST.

#### **ESPNL Antibody (C-term) - References**

Clark, H.F., et al. Genome Res. 13(10):2265-2270(2003)