

SEN5 Antibody (C-term)
Purified Rabbit Polyclonal Antibody (Pab)
Catalog # AP1237a**Specification**

SEN5 Antibody (C-term) - Product Information

Application	WB, IHC-P,E
Primary Accession	Q96HI0
Other Accession	Q6NXL6 , Q8WP32
Reactivity	Human
Predicted	Monkey, Mouse
Host	Rabbit
Clonality	Polyclonal
Isotype	Rabbit IgG
Antigen Region	524-555

SEN5 Antibody (C-term) - Additional Information**Gene ID** 205564**Other Names**

Sentrin-specific protease 5, Sentrin/SUMO-specific protease SEN5, SEN5

Target/Specificity

This SEN5 antibody is generated from rabbits immunized with a KLH conjugated synthetic peptide between 524-555 amino acids from the C-terminal region of human SEN5.

Dilution

WB~~1:1000

IHC-P~~1:50~100

Format

Purified polyclonal antibody supplied in PBS with 0.09% (W/V) sodium azide. This antibody is prepared by Saturated Ammonium Sulfate (SAS) precipitation followed by dialysis against PBS.

Storage

Maintain refrigerated at 2-8°C for up to 2 weeks. For long term storage store at -20°C in small aliquots to prevent freeze-thaw cycles.

Precautions

SEN5 Antibody (C-term) is for research use only and not for use in diagnostic or therapeutic procedures.

SEN5 Antibody (C-term) - Protein Information**Name** SEN5**Function** Protease that catalyzes two essential functions in the SUMO pathway: processing of

full-length SUMO3 to its mature form and deconjugation of SUMO2 and SUMO3 from targeted proteins. Has weak proteolytic activity against full-length SUMO1 or SUMO1 conjugates. Required for cell division.

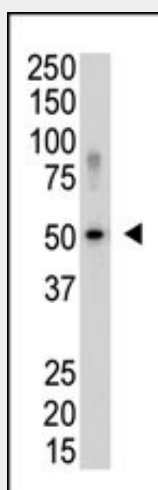
Cellular Location

Nucleus, nucleolus

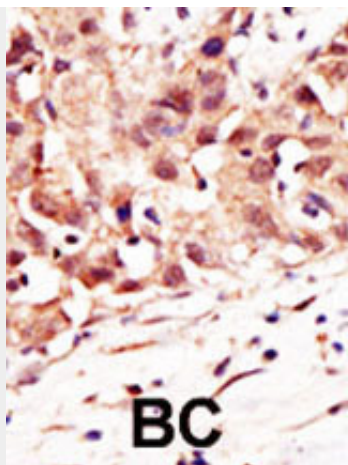
SEN5 Antibody (C-term) - Protocols

Provided below are standard protocols that you may find useful for product applications.

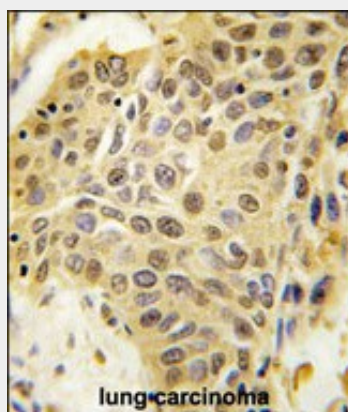
- [Western Blot](#)
- [Blocking Peptides](#)
- [Dot Blot](#)
- [Immunohistochemistry](#)
- [Immunofluorescence](#)
- [Immunoprecipitation](#)
- [Flow Cytometry](#)
- [Cell Culture](#)

SEN5 Antibody (C-term) - Images

Western blot analysis of SEN5 polyclonal antibody (Cat. #AP1237a) in Saos-2 cell lysate. SEN5 (Arrow) was detected using purified Pab. Secondary HRP-anti-rabbit was used for signal visualization with chemiluminescence.



Formalin-fixed and paraffin-embedded human cancer tissue reacted with the primary antibody, which was peroxidase-conjugated to the secondary antibody, followed by DAB staining. This data demonstrates the use of this antibody for immunohistochemistry; clinical relevance has not been evaluated. BC = breast carcinoma; HC = hepatocarcinoma.



Formalin-fixed and paraffin-embedded human lung carcinoma tissue reacted with SENP5 Antibody (C-term) (Cat.#AP1237a), which was peroxidase-conjugated to the secondary antibody, followed by DAB staining. This data demonstrates the use of this antibody for immunohistochemistry; clinical relevance has not been evaluated.

SENP5 Antibody (C-term) - Background

SENP5 is a protease that catalyzes two essential functions in the SUMO pathway: processing of full-length SUMO3 to its conjugatable mature form and deconjugation of SUMO2 and SUMO3 from targeted substrates. This protein has weak proteolytic activity against full-length SUMO1 or SUMO1 conjugates. SENP5 is required for cell division.

SENP5 Antibody (C-term) - References

Strausberg, R.L., et al., Proc. Natl. Acad. Sci. U.S.A. 99(26):16899-16903 (2002).

SENP5 Antibody (C-term) - Citations

- [Sentrin/small ubiquitin-like modifier-specific protease 5 protects oral cancer cells from oxidative stress-induced apoptosis.](#)