

WDR34 Antibody (Center)
Affinity Purified Rabbit Polyclonal Antibody (Pab)
Catalog # AP12421C**Specification**

WDR34 Antibody (Center) - Product Information

Application	WB,E
Primary Accession	O96EX3
Other Accession	NP_443076.2
Reactivity	Human
Host	Rabbit
Clonality	Polyclonal
Isotype	Rabbit IgG
Calculated MW	57801
Antigen Region	305-334

WDR34 Antibody (Center) - Additional Information**Gene ID** 89891**Other Names**

WD repeat-containing protein 34, WDR34

Target/Specificity

This WDR34 antibody is generated from rabbits immunized with a KLH conjugated synthetic peptide between 305-334 amino acids from the Central region of human WDR34.

Dilution

WB~~1:1000

Format

Purified polyclonal antibody supplied in PBS with 0.09% (W/V) sodium azide. This antibody is purified through a protein A column, followed by peptide affinity purification.

Storage

Maintain refrigerated at 2-8°C for up to 2 weeks. For long term storage store at -20°C in small aliquots to prevent freeze-thaw cycles.

Precautions

WDR34 Antibody (Center) is for research use only and not for use in diagnostic or therapeutic procedures.

WDR34 Antibody (Center) - Protein Information**Name** DYNC2I2 ([HGNC:28296](#))**Synonyms** WDR34

Function Acts as one of several non-catalytic accessory components of the cytoplasmic dynein 2 complex (dynein-2 complex), a motor protein complex that drives the movement of cargos along microtubules within cilia and flagella in concert with the intraflagellar transport (IFT) system (PubMed:[25205765](#), PubMed:[29742051](#)). DYNC2I2 plays a major role in retrograde ciliary protein trafficking and in ciliogenesis (PubMed:[30649997](#), PubMed:[29742051](#), PubMed:[30320547](#)). Required also to maintain a functional transition zone (PubMed:[30320547](#)).

Cellular Location

Cytoplasm. Cytoplasm, cytoskeleton, cilium basal body Cytoplasm, cytoskeleton, cilium axoneme Cytoplasm, cytoskeleton, microtubule organizing center, centrosome. Cell projection, cilium. Cell projection, filopodium {ECO:0000250|UniProtKB:Q5U4F6}. Note=Concentrates around the centrioles and basal bodies also showing axonemal staining {ECO:0000250|UniProtKB:Q5U4F6}

Tissue Location

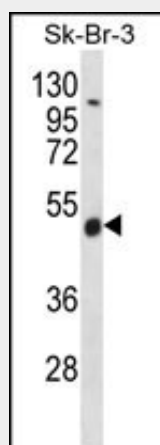
Expressed in several cell lines (at protein level).

WDR34 Antibody (Center) - Protocols

Provided below are standard protocols that you may find useful for product applications.

- [Western Blot](#)
- [Blocking Peptides](#)
- [Dot Blot](#)
- [Immunohistochemistry](#)
- [Immunofluorescence](#)
- [Immunoprecipitation](#)
- [Flow Cytometry](#)
- [Cell Culture](#)

WDR34 Antibody (Center) - Images



WDR34 Antibody (Center) (Cat. #AP12421c) western blot analysis in SK-BR-3 cell line lysates (35ug/lane). This demonstrates the WDR34 antibody detected the WDR34 protein (arrow).

WDR34 Antibody (Center) - Background

This gene encodes a member of the WD repeat protein family. WD repeats are minimally conserved regions of approximately 40 amino acids typically bracketed by gly-his and trp-aspartate (GH-WD), which may facilitate formation of heterotrimeric or multiprotein

complexes. Members of this family are involved in a variety of cellular processes, including cell cycle progression, signal transduction, apoptosis, and gene regulation.

WDR34 Antibody (Center) - References

Gao, D., et al. Cell. Mol. Life Sci. 66(15):2573-2584(2009)
Humphray, S.J., et al. Nature 429(6990):369-374(2004)