

RBM42 Antibody (C-term)
Affinity Purified Rabbit Polyclonal Antibody (Pab)
Catalog # AP12424b**Specification**

RBM42 Antibody (C-term) - Product Information

Application	WB, IHC-P,E
Primary Accession	Q9BTD8
Other Accession	Q6AXT7 , Q91V81 , Q0P5L0 , NP_077297.2
Reactivity	Human
Predicted	Bovine, Mouse, Rat
Host	Rabbit
Clonality	Polyclonal
Isotype	Rabbit IgG
Calculated MW	50414
Antigen Region	394-422

RBM42 Antibody (C-term) - Additional Information**Gene ID** 79171**Other Names**

RNA-binding protein 42, RNA-binding motif protein 42, RBM42

Target/Specificity

This RBM42 antibody is generated from rabbits immunized with a KLH conjugated synthetic peptide between 394-422 amino acids from the C-terminal region of human RBM42.

Dilution

WB~~1:1000

IHC-P~~1:10~50

Format

Purified polyclonal antibody supplied in PBS with 0.09% (W/V) sodium azide. This antibody is purified through a protein A column, followed by peptide affinity purification.

Storage

Maintain refrigerated at 2-8°C for up to 2 weeks. For long term storage store at -20°C in small aliquots to prevent freeze-thaw cycles.

Precautions

RBM42 Antibody (C-term) is for research use only and not for use in diagnostic or therapeutic procedures.

RBM42 Antibody (C-term) - Protein Information**Name** RBM42

Function Binds (via the RRM domain) to the 3'-untranslated region (UTR) of CDKN1A mRNA.

Cellular Location

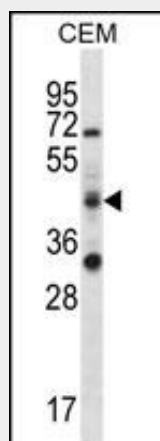
Nucleus. Cytoplasm. Note=Upon stress response, localizes with HNRNPK in cytoplasmic aggregates of stalled translational preinitiation complexes called stress granules.

RBM42 Antibody (C-term) - Protocols

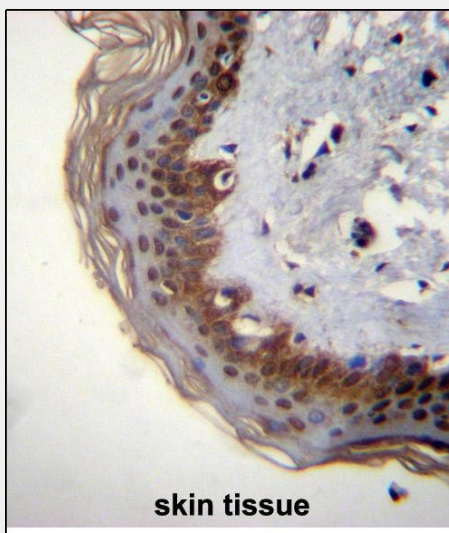
Provided below are standard protocols that you may find useful for product applications.

- [Western Blot](#)
- [Blocking Peptides](#)
- [Dot Blot](#)
- [Immunohistochemistry](#)
- [Immunofluorescence](#)
- [Immunoprecipitation](#)
- [Flow Cytometry](#)
- [Cell Culture](#)

RBM42 Antibody (C-term) - Images



RBM42 Antibody (C-term) (Cat. #AP12424b) western blot analysis in CEM cell line lysates (35ug/lane). This demonstrates the RBM42 antibody detected the RBM42 protein (arrow).



RBM42 Antibody (C-term) (Cat. #AP12424b) immunohistochemistry analysis in formalin fixed and paraffin embedded human skin tissue followed by peroxidase conjugation of the secondary antibody and DAB staining. This data demonstrates the use of RBM42 Antibody (C-term) for immunohistochemistry. Clinical relevance has not been evaluated.

RBM42 Antibody (C-term) - Background

RBM42 binds (via the RRM domain) to the 3'-untranslated region (UTR) of CDKN1A mRNA (By similarity).

RBM42 Antibody (C-term) - References

Fukuda, T., et al. Genes Cells 14(2):113-128(2009)
Lim, J., et al. Cell 125(4):801-814(2006)