

**TBCEL Antibody (C-term)**  
**Affinity Purified Rabbit Polyclonal Antibody (Pab)**  
**Catalog # AP12428b****Specification**

---

**TBCEL Antibody (C-term) - Product Information**

Application	WB, IHC-P,E
Primary Accession	<a href="#">Q5QJ74</a>
Other Accession	<a href="#">Q5PQJ7</a> , <a href="#">Q8C5W3</a> , <a href="#">NP_689928.3</a> , <a href="#">NP_001123519.1</a>
Reactivity	Human
Predicted	Mouse, Rat
Host	Rabbit
Clonality	Polyclonal
Isotype	Rabbit IgG
Calculated MW	48195
Antigen Region	385-413

**TBCEL Antibody (C-term) - Additional Information****Gene ID** 219899**Other Names**

Tubulin-specific chaperone cofactor E-like protein, EL, Leucine-rich repeat-containing protein 35, TBCEL, LRRC35

**Target/Specificity**

This TBCEL antibody is generated from rabbits immunized with a KLH conjugated synthetic peptide between 385-413 amino acids from the C-terminal region of human TBCEL.

**Dilution**WB~~1:1000  
IHC-P~~1:10~50**Format**

Purified polyclonal antibody supplied in PBS with 0.09% (W/V) sodium azide. This antibody is purified through a protein A column, followed by peptide affinity purification.

**Storage**

Maintain refrigerated at 2-8°C for up to 2 weeks. For long term storage store at -20°C in small aliquots to prevent freeze-thaw cycles.

**Precautions**

TBCEL Antibody (C-term) is for research use only and not for use in diagnostic or therapeutic procedures.

**TBCEL Antibody (C-term) - Protein Information**

**Name** TBCEL

**Synonyms** LRRC35

**Function** Acts as a regulator of tubulin stability.

**Cellular Location**  
Cytoplasm, cytoskeleton.

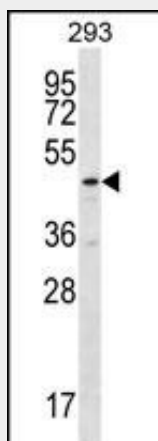
**Tissue Location**  
Abundantly expressed in testis, but is also present in several tissues at a much lower level

### TBCEL Antibody (C-term) - Protocols

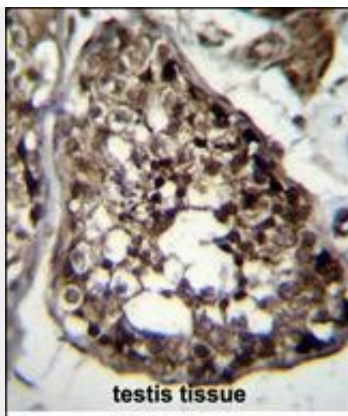
Provided below are standard protocols that you may find useful for product applications.

- [Western Blot](#)
- [Blocking Peptides](#)
- [Dot Blot](#)
- [Immunohistochemistry](#)
- [Immunofluorescence](#)
- [Immunoprecipitation](#)
- [Flow Cytometry](#)
- [Cell Culture](#)

### TBCEL Antibody (C-term) - Images



TBCEL Antibody (C-term) (Cat. #AP12428b) western blot analysis in 293 cell line lysates (35ug/lane). This demonstrates the TBCEL antibody detected the TBCEL protein (arrow).



TBCEL Antibody (C-term) (Cat. #AP12428b) immunohistochemistry analysis in formalin fixed and paraffin embedded human testis tissue followed by peroxidase conjugation of the secondary antibody and DAB staining. This data demonstrates the use of TBCEL Antibody (C-term) for immunohistochemistry. Clinical relevance has not been evaluated.

#### **TBCEL Antibody (C-term) - Background**

TBCEL acts as a regulator of tubulin stability.

#### **TBCEL Antibody (C-term) - References**

Rose, J. Phd, et al. Mol. Med. (2010) In press :  
Sellin, M.E., et al. Exp. Cell Res. 314(6):1367-1377(2008)  
Bartolini, F., et al. J. Cell. Sci. 118 (PT 6), 1197-1207 (2005) :