

**KRTAP13-3 Antibody (C-term)**  
**Affinity Purified Rabbit Polyclonal Antibody (Pab)**  
**Catalog # AP12430b****Specification**

---

**KRTAP13-3 Antibody (C-term) - Product Information**

Application	WB, FC,E
Primary Accession	<a href="#">Q3SY46</a>
Other Accession	<a href="#">NP_853653.1</a>
Reactivity	Human
Host	Rabbit
Clonality	Polyclonal
Isotype	Rabbit IgG
Calculated MW	19236
Antigen Region	13-3

**KRTAP13-3 Antibody (C-term) - Additional Information****Gene ID** 337960**Other Names**

Keratin-associated protein 13-3, KRTAP13-3, KAP133

**Target/Specificity**

This KRTAP13-3 antibody is generated from rabbits immunized with a KLH conjugated synthetic peptide between 108-135 amino acids from the C-terminal region of human KRTAP13-3.

**Dilution**

WB~~1:1000

FC~~1:10~50

**Format**

Purified polyclonal antibody supplied in PBS with 0.09% (W/V) sodium azide. This antibody is purified through a protein A column, followed by peptide affinity purification.

**Storage**

Maintain refrigerated at 2-8°C for up to 2 weeks. For long term storage store at -20°C in small aliquots to prevent freeze-thaw cycles.

**Precautions**

KRTAP13-3 Antibody (C-term) is for research use only and not for use in diagnostic or therapeutic procedures.

**KRTAP13-3 Antibody (C-term) - Protein Information****Name** KRTAP13-3**Synonyms** KAP13.3

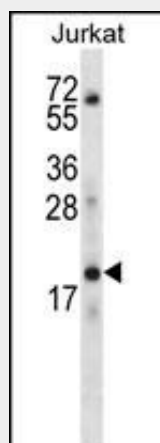
**Function** In the hair cortex, hair keratin intermediate filaments are embedded in an interfilamentous matrix, consisting of hair keratin-associated proteins (KRTAP), which are essential for the formation of a rigid and resistant hair shaft through their extensive disulfide bond cross-linking with abundant cysteine residues of hair keratins. The matrix proteins include the high-sulfur and high-glycine-tyrosine keratins (By similarity).

### KRTAP13-3 Antibody (C-term) - Protocols

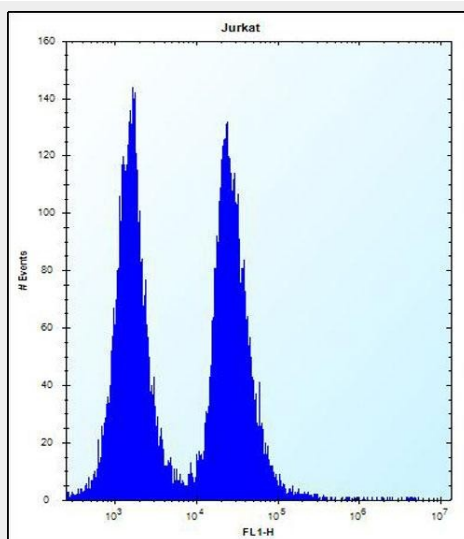
Provided below are standard protocols that you may find useful for product applications.

- [Western Blot](#)
- [Blocking Peptides](#)
- [Dot Blot](#)
- [Immunohistochemistry](#)
- [Immunofluorescence](#)
- [Immunoprecipitation](#)
- [Flow Cytometry](#)
- [Cell Culture](#)

### KRTAP13-3 Antibody (C-term) - Images



KRTAP13-3 Antibody (C-term) (Cat. #AP12430b) western blot analysis in Jurkat cell line lysates (35ug/lane). This demonstrates the KRTAP13-3 antibody detected the KRTAP13-3 protein (arrow).



KRTAP13-3 Antibody (C-term) (Cat. #AP12430b) flow cytometric analysis of Jurkat cells (right histogram) compared to a negative control cell (left histogram). FITC-conjugated donkey-anti-rabbit secondary antibodies were used for the analysis.

#### **KRTAP13-3 Antibody (C-term) - Background**

In the hair cortex, hair keratin intermediate filaments are embedded in an interfilamentous matrix, consisting of hair keratin-associated proteins (KRTAP), which are essential for the formation of a rigid and resistant hair shaft through their extensive disulfide bond cross-linking with abundant cysteine residues of hair keratins. The matrix proteins include the high-sulfur and high-glycine-tyrosine keratins (By similarity).

#### **KRTAP13-3 Antibody (C-term) - References**

Rogers, M.A., et al. J. Biol. Chem. 277(50):48993-49002(2002)