

**METTL11B Antibody (N-term)**  
**Affinity Purified Rabbit Polyclonal Antibody (Pab)**  
**Catalog # AP12508a****Specification**

---

**METTL11B Antibody (N-term) - Product Information**

Application	WB,E
Primary Accession	<a href="#">Q5VYY1</a>
Other Accession	<a href="#">D3ZVR1</a> , <a href="#">B2RXM4</a> , <a href="#">NP_001129579.1</a>
Reactivity	Mouse
Predicted	Rat
Host	Rabbit
Clonality	Polyclonal
Isotype	Rabbit IgG
Calculated MW	32400
Antigen Region	14-42

**METTL11B Antibody (N-term) - Additional Information****Gene ID** 149281**Other Names**

Alpha N-terminal protein methyltransferase 1B, Methyltransferase-like protein 11B, X-Pro-Lys N-terminal protein methyltransferase 1B, NTM1B, METTL11B, C1orf184, NRMT2

**Target/Specificity**

This METTL11B antibody is generated from rabbits immunized with a KLH conjugated synthetic peptide between 14-42 amino acids from the N-terminal region of human METTL11B.

**Dilution**

WB~~1:1000

**Format**

Purified polyclonal antibody supplied in PBS with 0.09% (W/V) sodium azide. This antibody is purified through a protein A column, followed by peptide affinity purification.

**Storage**

Maintain refrigerated at 2-8°C for up to 2 weeks. For long term storage store at -20°C in small aliquots to prevent freeze-thaw cycles.

**Precautions**

METTL11B Antibody (N-term) is for research use only and not for use in diagnostic or therapeutic procedures.

**METTL11B Antibody (N-term) - Protein Information****Name** NTMT2 ([HGNC:31932](#))

**Function** Alpha N-methyltransferase that methylates the N-terminus of target proteins containing the N-terminal motif [Ala/Pro/Ser]-Pro-Lys when the initiator Met is cleaved. Specifically catalyzes monomethylation of exposed alpha-amino group of Ala or Ser residue in the [Ala/Ser]-Pro-Lys motif and Pro in the Pro-Pro-Lys motif (PubMed:[24090352](#), PubMed:[30417120](#)). Predominantly functions as a mono- methyltransferase but is also able to di-/tri-methylate the GPKRIA peptide and di-methylate the PPKRIA peptide (in vitro) (PubMed:[30417120](#)). May activate NTMT1 by priming its substrates for trimethylation (PubMed:[24090352](#)).

#### Cellular Location

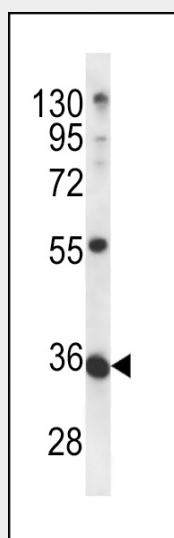
Nucleus.

#### METTL11B Antibody (N-term) - Protocols

Provided below are standard protocols that you may find useful for product applications.

- [Western Blot](#)
- [Blocking Peptides](#)
- [Dot Blot](#)
- [Immunohistochemistry](#)
- [Immunofluorescence](#)
- [Immunoprecipitation](#)
- [Flow Cytometry](#)
- [Cell Culture](#)

#### METTL11B Antibody (N-term) - Images



METTL11B Antibody (N-term) (Cat. #AP12508a) western blot analysis in mouse bladder tissue lysates (35ug/lane). This demonstrates the METTL11B antibody detected the METTL11B protein (arrow).

#### METTL11B Antibody (N-term) - Background

METTL11B is alpha-N-methyltransferase that methylates the N-terminus of target proteins containing the N-terminal motif [Ala/Pro/Ser]-Pro-Lys when the initiator Met is cleaved. Specifically catalyzes mono-, di- or tri-methylation of exposed alpha-amino group of Ala, Pro or Ser residue in the [Ala/Pro/Ser]-Pro-Lys motif (By similarity).

### **METTL11B Antibody (N-term) - References**

Gregory, S.G., et al. Nature 441(7091):315-321(2006)