

OR11L1 Antibody (C-term)
Affinity Purified Rabbit Polyclonal Antibody (Pab)
Catalog # AP12515b**Specification**

OR11L1 Antibody (C-term) - Product Information

Application	WB, FC,E
Primary Accession	Q8NGX0
Other Accession	NP_001001959.1
Reactivity	Human
Host	Rabbit
Clonality	Polyclonal
Isotype	Rabbit IgG
Calculated MW	36763
Antigen Region	279-308

OR11L1 Antibody (C-term) - Additional Information**Gene ID** 391189**Other Names**

Olfactory receptor 11L1, OR11L1

Target/Specificity

This OR11L1 antibody is generated from rabbits immunized with a KLH conjugated synthetic peptide between 279-308 amino acids from the C-terminal region of human OR11L1.

Dilution

WB~~1:1000

FC~~1:10~50

Format

Purified polyclonal antibody supplied in PBS with 0.09% (W/V) sodium azide. This antibody is purified through a protein A column, followed by peptide affinity purification.

Storage

Maintain refrigerated at 2-8°C for up to 2 weeks. For long term storage store at -20°C in small aliquots to prevent freeze-thaw cycles.

Precautions

OR11L1 Antibody (C-term) is for research use only and not for use in diagnostic or therapeutic procedures.

OR11L1 Antibody (C-term) - Protein Information**Name** OR11L1**Function** Odorant receptor.

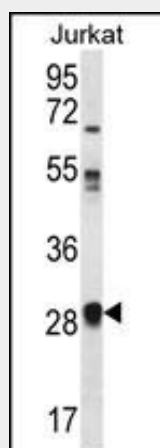
Cellular Location

Cell membrane; Multi-pass membrane protein.

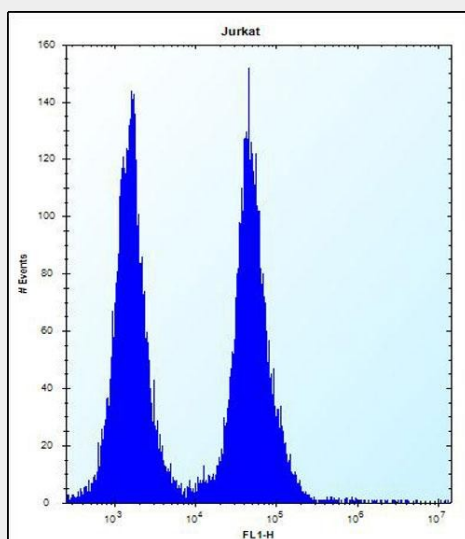
OR11L1 Antibody (C-term) - Protocols

Provided below are standard protocols that you may find useful for product applications.

- [Western Blot](#)
- [Blocking Peptides](#)
- [Dot Blot](#)
- [Immunohistochemistry](#)
- [Immunofluorescence](#)
- [Immunoprecipitation](#)
- [Flow Cytometry](#)
- [Cell Culture](#)

OR11L1 Antibody (C-term) - Images

OR11L1 Antibody (C-term) (Cat. #AP12515b) western blot analysis in Jurkat cell line lysates (35ug/lane). This demonstrates the OR11L1 antibody detected the OR11L1 protein (arrow).



OR11L1 Antibody (C-term) (Cat. #AP12515b) flow cytometric analysis of Jurkat cells (right

histogram) compared to a negative control cell (left histogram).FITC-conjugated donkey-anti-rabbit secondary antibodies were used for the analysis.

OR11L1 Antibody (C-term) - Background

Olfactory receptors interact with odorant molecules in the nose, to initiate a neuronal response that triggers the perception of a smell. The olfactory receptor proteins are members of a large family of G-protein-coupled receptors (GPCR) arising from single coding-exon genes. Olfactory receptors share a 7-transmembrane domain structure with many neurotransmitter and hormone receptors and are responsible for the recognition and G protein-mediated transduction of odorant signals. The olfactory receptor gene family is the largest in the genome. The nomenclature assigned to the olfactory receptor genes and proteins for this organism is independent of other organisms.

OR11L1 Antibody (C-term) - References

Malnic, B., et al. Proc. Natl. Acad. Sci. U.S.A. 101(8):2584-2589(2004)