

PROX2 Antibody (C-term)
Affinity Purified Rabbit Polyclonal Antibody (Pab)
Catalog # AP12529b

Specification

PROX2 Antibody (C-term) - Product Information

| | |
|-------------------|--------------------------------|
| Application | WB, IHC-P,E |
| Primary Accession | Q3B8N5 |
| Other Accession | NP_001073877.1 |
| Reactivity | Human |
| Host | Rabbit |
| Clonality | Polyclonal |
| Isotype | Rabbit IgG |
| Calculated MW | 65586 |
| Antigen Region | 511-539 |

PROX2 Antibody (C-term) - Additional Information

Gene ID 283571

Other Names

Prospero homeobox protein 2, Homeobox prospero-like protein PROX2, PROX-2, PROX2

Target/Specificity

This PROX2 antibody is generated from rabbits immunized with a KLH conjugated synthetic peptide between 511-539 amino acids from the C-terminal region of human PROX2.

Dilution

WB~~1:1000

IHC-P~~1:10~50

Format

Purified polyclonal antibody supplied in PBS with 0.09% (W/V) sodium azide. This antibody is purified through a protein A column, followed by peptide affinity purification.

Storage

Maintain refrigerated at 2-8°C for up to 2 weeks. For long term storage store at -20°C in small aliquots to prevent freeze-thaw cycles.

Precautions

PROX2 Antibody (C-term) is for research use only and not for use in diagnostic or therapeutic procedures.

PROX2 Antibody (C-term) - Protein Information

Name PROX2

Function Transcription regulator. Does not seem to be essential for embryonic development and

postnatal survival (By similarity).

Cellular Location

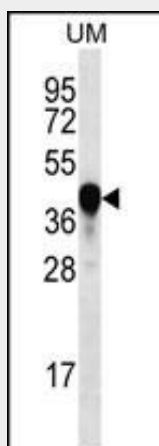
Nucleus.

PROX2 Antibody (C-term) - Protocols

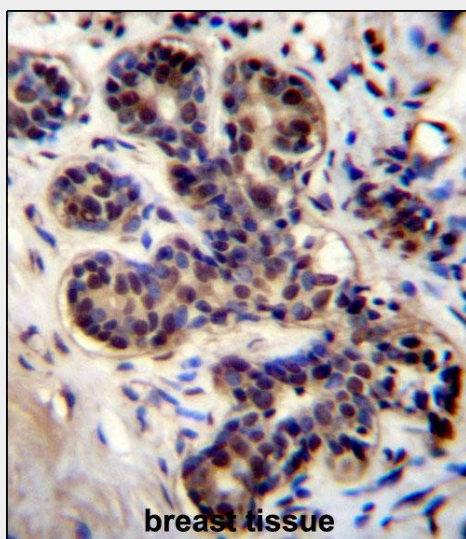
Provided below are standard protocols that you may find useful for product applications.

- [Western Blot](#)
- [Blocking Peptides](#)
- [Dot Blot](#)
- [Immunohistochemistry](#)
- [Immunofluorescence](#)
- [Immunoprecipitation](#)
- [Flow Cytometry](#)
- [Cell Culture](#)

PROX2 Antibody (C-term) - Images



PROX2 Antibody (C-term) (Cat. #AP12529b) western blot analysis in uterus tumor cell line lysates (35ug/lane). This demonstrates the PROX2 antibody detected the PROX2 protein (arrow).



PROX2 Antibody (C-term) (Cat. #AP12529b) immunohistochemistry analysis in formalin fixed and paraffin embedded human breast tissue followed by peroxidase conjugation of the secondary antibody and DAB staining. This data demonstrates the use of PROX2 Antibody (C-term) for immunohistochemistry. Clinical relevance has not been evaluated.

PROX2 Antibody (C-term) - Background

PROX2 is a transcription regulator. Does not seem to be essential for embryonic development and postnatal survival (By similarity).

PROX2 Antibody (C-term) - References

Ota, T., et al. Nat. Genet. 36(1):40-45(2004)

Strausberg, R.L., et al. Proc. Natl. Acad. Sci. U.S.A. 99(26):16899-16903(2002)