

MLXIPL Antibody (C-term)
Affinity Purified Rabbit Polyclonal Antibody (Pab)
Catalog # AP12562b

Specification

MLXIPL Antibody (C-term) - Product Information

Application	WB, IHC-P,E
Primary Accession	O9NP71
Other Accession	NP_116571.1 , NP_116569.1
Reactivity	Human, Mouse
Host	Rabbit
Clonality	Polyclonal
Isotype	Rabbit IgG
Antigen Region	624-653

MLXIPL Antibody (C-term) - Additional Information

Gene ID 51085

Other Names

Carbohydrate-responsive element-binding protein, ChREBP, Class D basic helix-loop-helix protein 14, bHLHD14, MLX interactor, MLX-interacting protein-like, WS basic-helix-loop-helix leucine zipper protein, WS-bHLH, Williams-Beuren syndrome chromosomal region 14 protein, MLXIPL, BHLHD14, MIO, WBSCR14

Target/Specificity

This MLXIPL antibody is generated from rabbits immunized with a KLH conjugated synthetic peptide between 624-653 amino acids from the C-terminal region of human MLXIPL.

Dilution

WB~~1:2000
IHC-P~~1:10~50

Format

Purified polyclonal antibody supplied in PBS with 0.09% (W/V) sodium azide. This antibody is purified through a protein A column, followed by peptide affinity purification.

Storage

Maintain refrigerated at 2-8°C for up to 2 weeks. For long term storage store at -20°C in small aliquots to prevent freeze-thaw cycles.

Precautions

MLXIPL Antibody (C-term) is for research use only and not for use in diagnostic or therapeutic procedures.

MLXIPL Antibody (C-term) - Protein Information

Name MLXIPL

Synonyms BHLHD14, MIO, WBSCR14

Function Binds DNA as a heterodimer with MLX/TCFL4 and activates transcription. Binds to the canonical E box sequence 5'-CACGTG-3'. Plays a role in transcriptional activation of glycolytic target genes. Involved in glucose-responsive gene regulation (By similarity). Regulates transcription in response to changes in cellular carbohydrate abundance such as occurs during fasting to feeding metabolic transition. Refeeding stimulates MLXIPL/ChREBP transcription factor, leading to increased BCKDK to PPM1K expression ratio, phosphorylation and activation of ACLY that ultimately results in the generation of malonyl-CoA and oxaloacetate immediate substrates of de novo lipogenesis and gluconeogenesis, respectively (By similarity).

Cellular Location

Nucleus.

Tissue Location

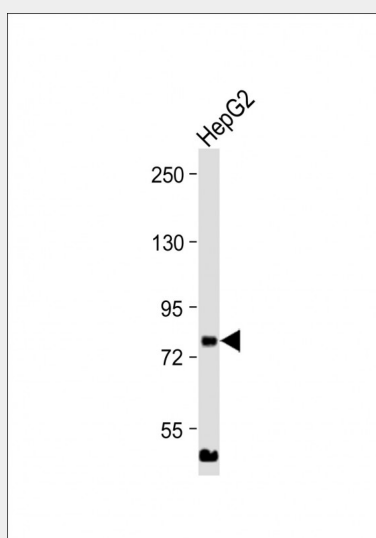
Expressed in liver, heart, kidney, cerebellum and intestinal tissues

MLXIPL Antibody (C-term) - Protocols

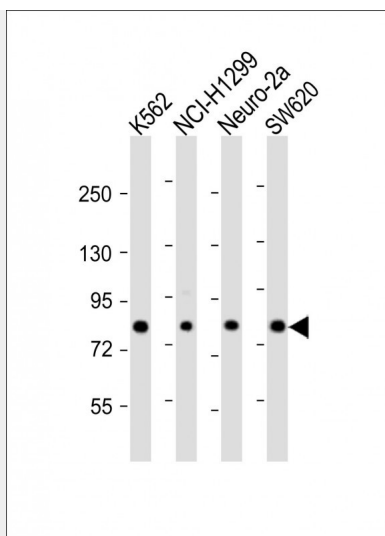
Provided below are standard protocols that you may find useful for product applications.

- [Western Blot](#)
- [Blocking Peptides](#)
- [Dot Blot](#)
- [Immunohistochemistry](#)
- [Immunofluorescence](#)
- [Immunoprecipitation](#)
- [Flow Cytometry](#)
- [Cell Culture](#)

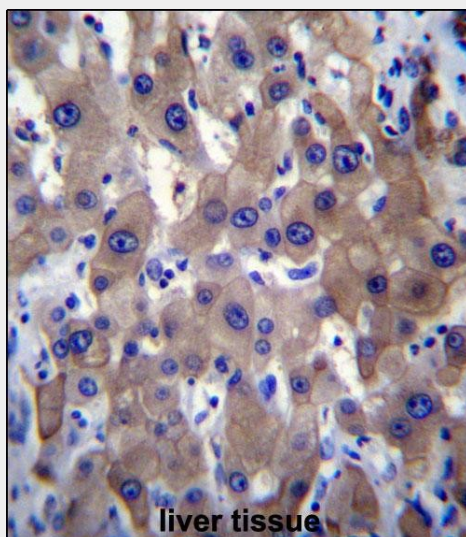
MLXIPL Antibody (C-term) - Images



Anti-MLXIPL Antibody (C-term) at 1:2000 dilution + HepG2 whole cell lysate Lysates/proteins at 20 µg per lane. Secondary Goat Anti-Rabbit IgG, (H+L), Peroxidase conjugated at 1/10000 dilution. Predicted band size : 93 kDa Blocking/Dilution buffer: 5% NFDM/TBST.



All lanes : Anti-MLXIPL Antibody (C-term) at 1:2000 dilution Lane 1: K562 whole cell lysate Lane 2: NCI-H1299 whole cell lysate Lane 3: Neuro-2a whole cell lysate Lane 4: SW620 whole cell lysate Lysates/proteins at 20 µg per lane. Secondary Goat Anti-Rabbit IgG, (H+L), Peroxidase conjugated at 1/10000 dilution. Predicted band size : 93 kDa Blocking/Dilution buffer: 5% NFDM/TBST.



MLXIPL Antibody (C-term) (Cat. #AP12562b) immunohistochemistry analysis in formalin fixed and paraffin embedded human liver tissue followed by peroxidase conjugation of the secondary antibody and DAB staining. This data demonstrates the use of MLXIPL Antibody (C-term) for immunohistochemistry. Clinical relevance has not been evaluated.

MLXIPL Antibody (C-term) - Background

This gene encodes a basic helix-loop-helix leucine zipper transcription factor of the Myc/Max/Mad superfamily. This protein forms a heterodimeric complex and binds and activates, in a glucose-dependent manner, carbohydrate response element (ChoRE) motifs in the promoters of triglyceride synthesis genes. The gene is deleted in Williams-Beuren syndrome, a multisystem developmental disorder caused by the deletion of contiguous genes at chromosome 7q11.23.

MLXIPL Antibody (C-term) - References

Hu, M., et al. Pharmacogenet. Genomics 20(10):634-637(2010)
Johansen, C.T., et al. Nat. Genet. 42(8):684-687(2010)
Keebler, M.E., et al. Circ Cardiovasc Genet 3(4):358-364(2010)
Chidambaram, M., et al. Metab. Clin. Exp. (2010) In press :
Reynolds, C.A., et al. Hum. Mol. Genet. 19(10):2068-2078(2010)