

**BEND6 Antibody (C-term)**  
**Affinity Purified Rabbit Polyclonal Antibody (Pab)**  
**Catalog # AP12587b****Specification**

---

**BEND6 Antibody (C-term) - Product Information**

Application	WB, IHC-P,E
Primary Accession	<a href="#">Q5SZJ8</a>
Other Accession	<a href="#">NP_689944.2</a>
Reactivity	Human
Host	Rabbit
Clonality	Polyclonal
Isotype	Rabbit IgG
Calculated MW	31222
Antigen Region	226-254

**BEND6 Antibody (C-term) - Additional Information****Gene ID** 221336**Other Names**

BEN domain-containing protein 6, BEND6, C6orf65

**Target/Specificity**

This BEND6 antibody is generated from rabbits immunized with a KLH conjugated synthetic peptide between 226-254 amino acids from the C-terminal region of human BEND6.

**Dilution**

WB~~1:1000

IHC-P~~1:10~50

**Format**

Purified polyclonal antibody supplied in PBS with 0.09% (W/V) sodium azide. This antibody is purified through a protein A column, followed by peptide affinity purification.

**Storage**

Maintain refrigerated at 2-8°C for up to 2 weeks. For long term storage store at -20°C in small aliquots to prevent freeze-thaw cycles.

**Precautions**

BEND6 Antibody (C-term) is for research use only and not for use in diagnostic or therapeutic procedures.

**BEND6 Antibody (C-term) - Protein Information****Name** BEND6**Synonyms** C6orf65

**Function** Acts as a corepressor of recombining binding protein suppressor hairless (RBPJ) and inhibits Notch signaling in neural stem cells, thereby opposing their self-renewal and promoting neurogenesis (PubMed:[23571214](#)).

**Cellular Location**

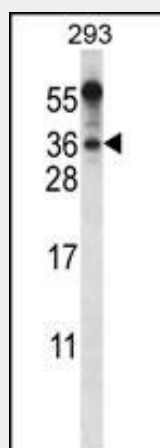
Nucleus {ECO:0000250|UniProtKB:Q6PFX2}.

**BEND6 Antibody (C-term) - Protocols**

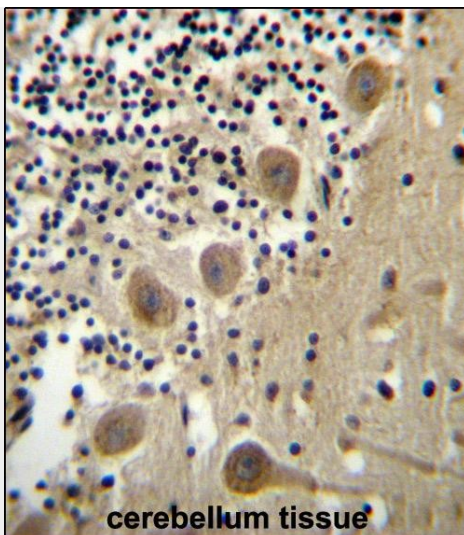
Provided below are standard protocols that you may find useful for product applications.

- [Western Blot](#)
- [Blocking Peptides](#)
- [Dot Blot](#)
- [Immunohistochemistry](#)
- [Immunofluorescence](#)
- [Immunoprecipitation](#)
- [Flow Cytometry](#)
- [Cell Culture](#)

**BEND6 Antibody (C-term) - Images**



BEND6 Antibody (C-term) (Cat. #AP12587b) western blot analysis in 293 cell line lysates (35ug/lane). This demonstrates the BEND6 antibody detected the BEND6 protein (arrow).



BEND6 Antibody (C-term) (Cat. #AP12587b) immunohistochemistry analysis in formalin fixed and paraffin embedded human cerebellum tissue followed by peroxidase conjugation of the secondary antibody and DAB staining. This data demonstrates the use of BEND6 Antibody (C-term) for immunohistochemistry. Clinical relevance has not been evaluated.

#### **BEND6 Antibody (C-term) - Background**

The exact functions of this protein remain unknown.