

YIF1B Antibody (N-term)
Affinity Purified Rabbit Polyclonal Antibody (Pab)
Catalog # AP12599a**Specification**

YIF1B Antibody (N-term) - Product Information

Application	WB, IHC-P,E
Primary Accession	Q5BJH7
Other Accession	NP_001034760.1 , NP_001034761.1
Reactivity	Human
Host	Rabbit
Clonality	Polyclonal
Isotype	Rabbit IgG
Calculated MW	34435
Antigen Region	82-110

YIF1B Antibody (N-term) - Additional Information**Gene ID** 90522**Other Names**

Protein YIF1B, YIP1-interacting factor homolog B, YIF1B

Target/Specificity

This YIF1B antibody is generated from rabbits immunized with a KLH conjugated synthetic peptide between 82-110 amino acids from the N-terminal region of human YIF1B.

Dilution

WB~~1:1000

IHC-P~~1:10~50

Format

Purified polyclonal antibody supplied in PBS with 0.09% (W/V) sodium azide. This antibody is purified through a protein A column, followed by peptide affinity purification.

Storage

Maintain refrigerated at 2-8°C for up to 2 weeks. For long term storage store at -20°C in small aliquots to prevent freeze-thaw cycles.

Precautions

YIF1B Antibody (N-term) is for research use only and not for use in diagnostic or therapeutic procedures.

YIF1B Antibody (N-term) - Protein Information**Name** YIF1B ([HGNC:30511](#))**Function** Functions in endoplasmic reticulum to Golgi vesicle-mediated transport and regulates

the proper organization of the endoplasmic reticulum and the Golgi (By similarity). Plays a key role in targeting to neuronal dendrites receptors such as HTR1A (By similarity). Plays also a role in primary cilium and sperm flagellum assembly probably through protein transport to these compartments (PubMed:[33103737](#)).

Cellular Location

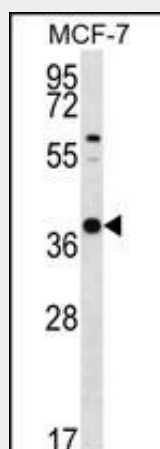
Endoplasmic reticulum membrane; Multi-pass membrane protein. Golgi apparatus membrane; Multi-pass membrane protein. Endoplasmic reticulum-Golgi intermediate compartment membrane; Multi-pass membrane protein. Note=Shuttles between the endoplasmic reticulum, the intermediate compartment and the Golgi apparatus.

YIF1B Antibody (N-term) - Protocols

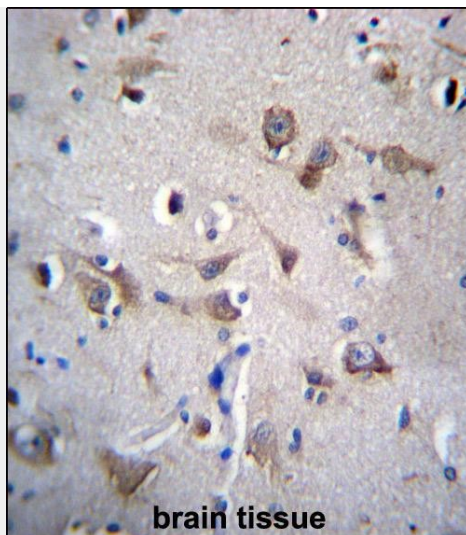
Provided below are standard protocols that you may find useful for product applications.

- [Western Blot](#)
- [Blocking Peptides](#)
- [Dot Blot](#)
- [Immunohistochemistry](#)
- [Immunofluorescence](#)
- [Immunoprecipitation](#)
- [Flow Cytometry](#)
- [Cell Culture](#)

YIF1B Antibody (N-term) - Images



YIF1B Antibody (N-term) (Cat. #AP12599a) western blot analysis in MCF-7 cell line lysates (35ug/lane). This demonstrates the YIF1B antibody detected the YIF1B protein (arrow).



YIF1B Antibody (N-term) (Cat. #AP12599a) immunohistochemistry analysis in formalin fixed and paraffin embedded human brain tissue followed by peroxidase conjugation of the secondary antibody and DAB staining. This data demonstrates the use of YIF1B Antibody (N-term) for immunohistochemistry. Clinical relevance has not been evaluated.

YIF1B Antibody (N-term) - Background

YIF1B belongs to the YIF1 family. The functions of YIF1B remain unknown.

YIF1B Antibody (N-term) - References

Lamesch, P., et al. Genomics 89(3):307-315(2007)
Venter, J.C., et al. Science 291(5507):1304-1351(2001)